

**LIVE** & Follow up

# Simple implantation & A.R.P on Upper Ant. Using Osteon™ 3 Collagen & Collagen Graft 2



Dr. SM Chung

2025.05.02. (Fri)

# Patient Information

**Age** : 75

**Sex** : Male

## **Chief Complaint**

: My front teeth are moving

## **Past Dental History**

Implantation on #16,33,36,37,43,44,45,46

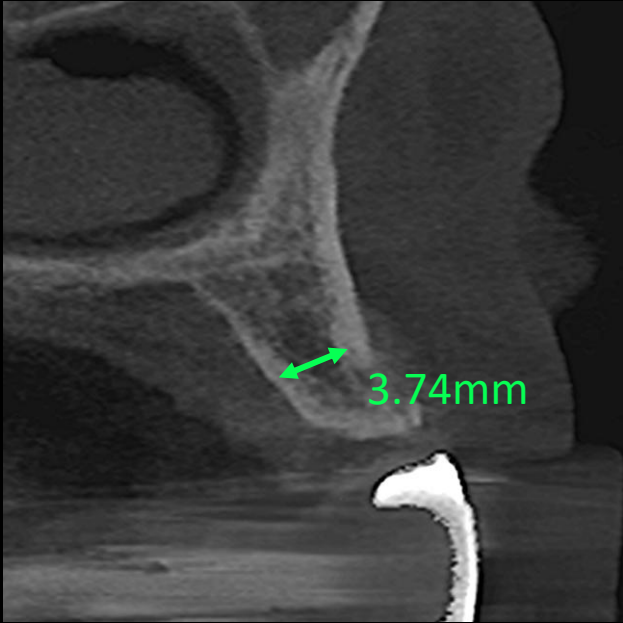
## **Past Medical History**

: stomach cancer

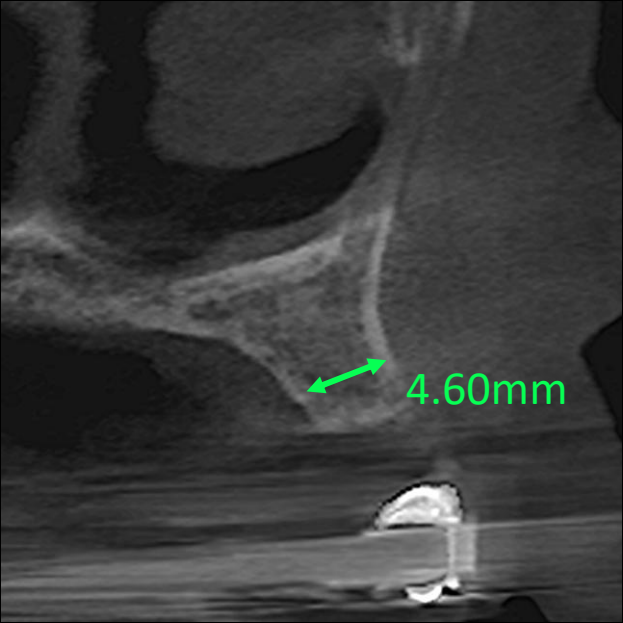


Pre-op

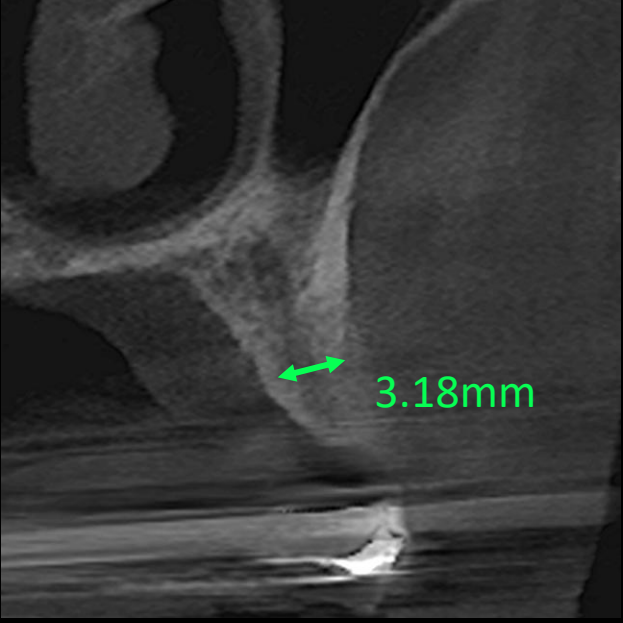




#12



#22



#24

Pre-op



## Surgery Plan (#12,22,24)



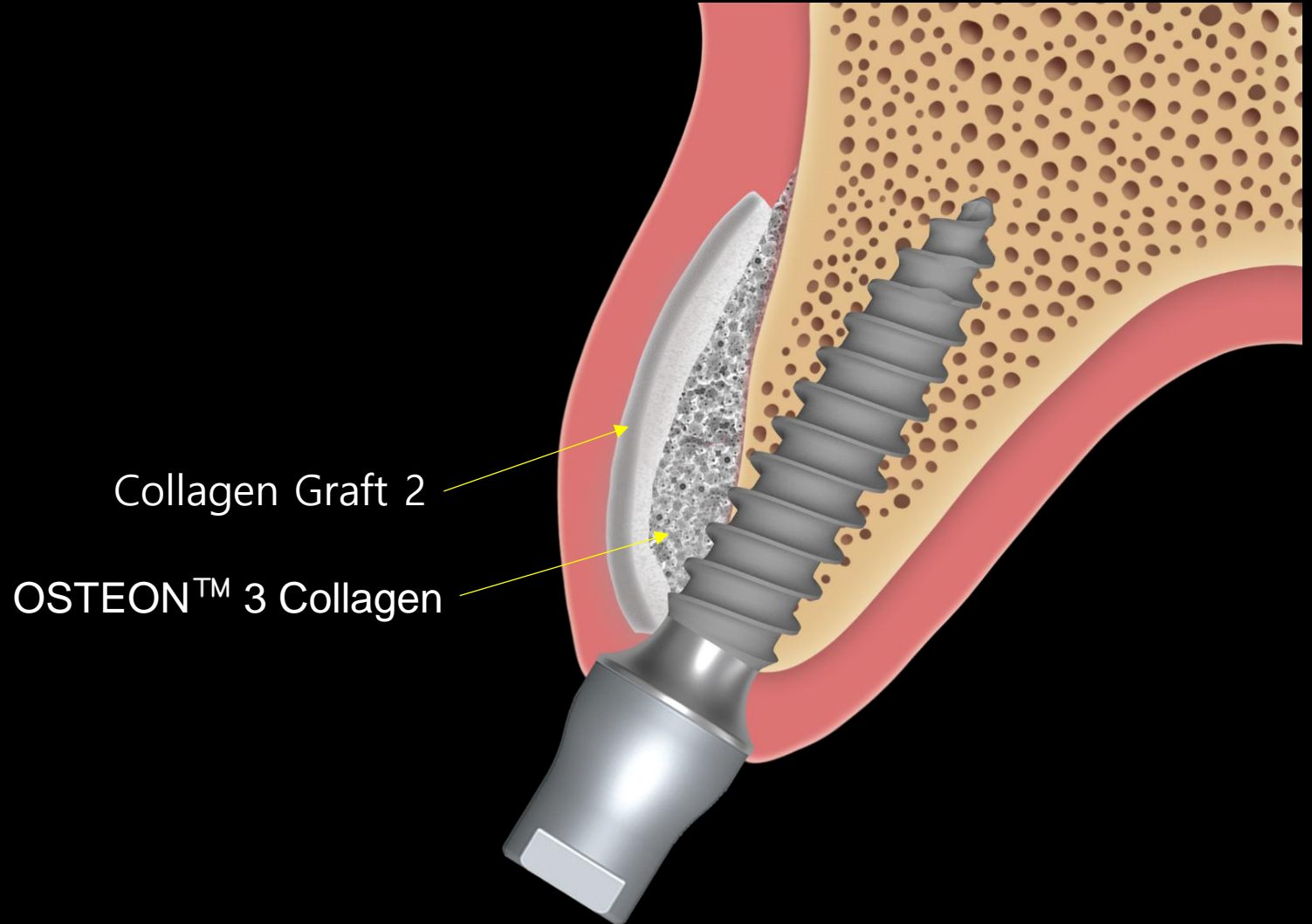
- Old bridge removal & Extraction and immediate implantation using **bright Tissue Level 3.0**
- Contour augmentation using **Osteon™ 3 Collagen, Collagen Graft 2**

## Minimalism in GBR

# Today's Surgery point

✓ **Easy GBR with bright TL**

- 1) Narrow implant
- 2) OSTEON™ 3 Collagen
- 3) Collagen Graft 2



# bright Implant **Tissue Level**

✓ **Narrow, Yet Strong**

- Excellent Joint Stability

✓ **20° External Tapered & External Hex**

- Excellent Joint Stability

- Multi Purpose and Easy-to-Use  
Connection on Trans-Mucosa

✓ **Concaved Neck**

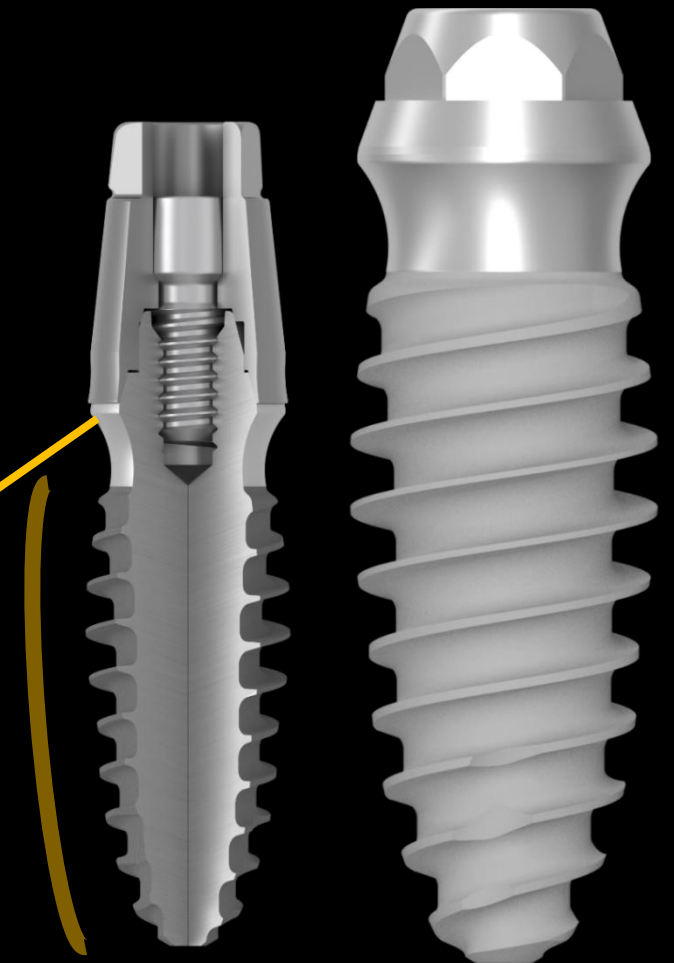
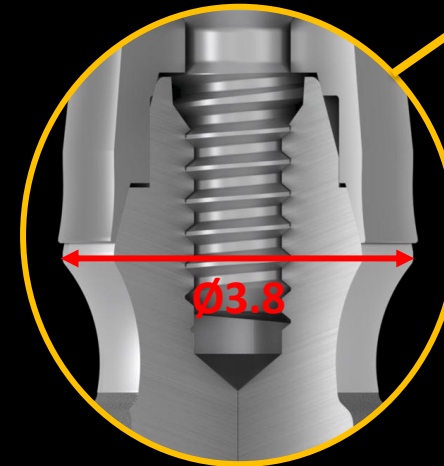
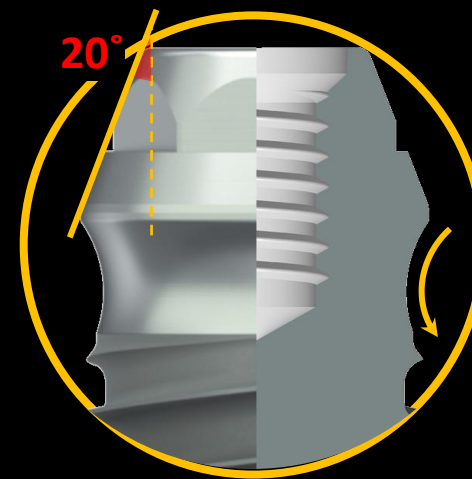
- Better Contour Management for Soft Tissue

✓ **Dome Shaped Body**

- Better Primary Stability  
- Better BIC on Cancellous Bone  
- Marginal Bone Preservation

✓ **Ø3.8 Single Platform**

- One Connection / One Prosthetic Line





# OSTEON™ 3 Collagen

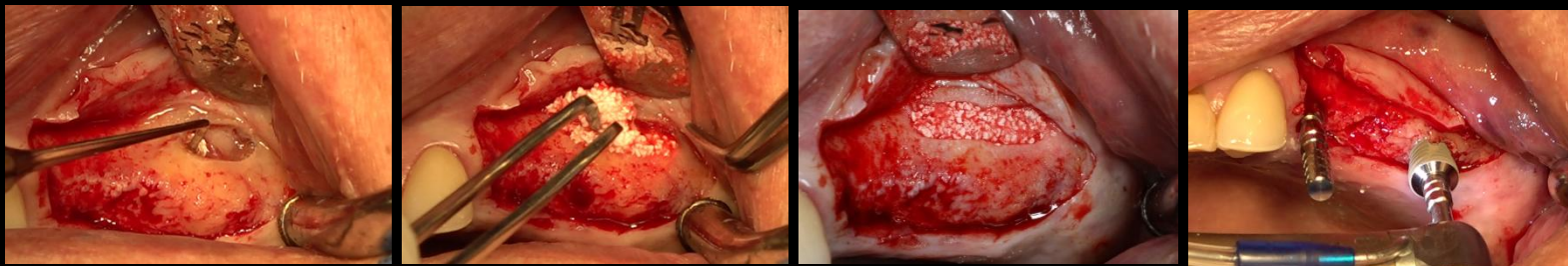
- Moldable to various defect shapes during wetting
- Easy handling to reduce chair time
- Collagen is absorbed within a few weeks after grafting



Case 1

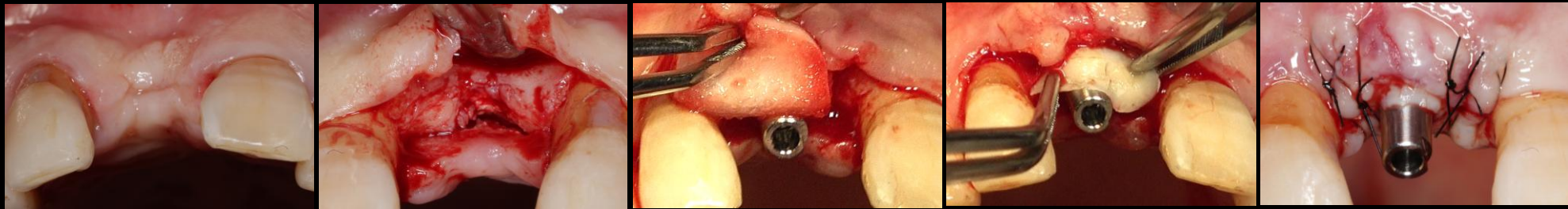


Case 2



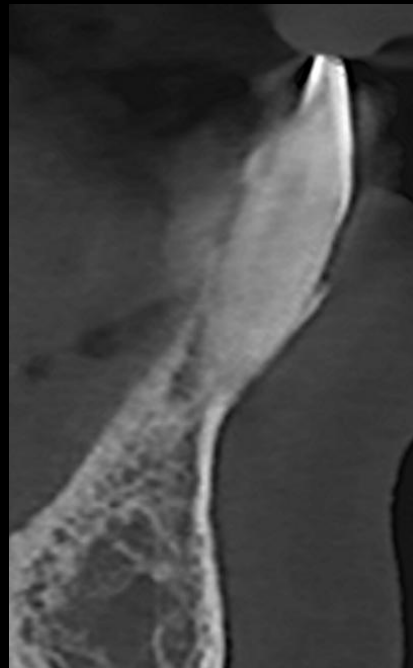
# Collagen Graft 2

- Ridge preservation
- Porcine tendon derived type I collagen
- Faster soft tissue healing by epithelization

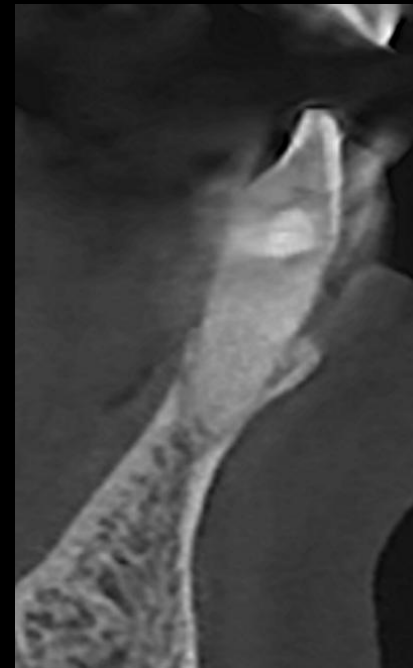


**Similar case**

Simple implant placement using bright TL Ø 2.5



**#42**



**#32**

Pre-op

**Similar case**

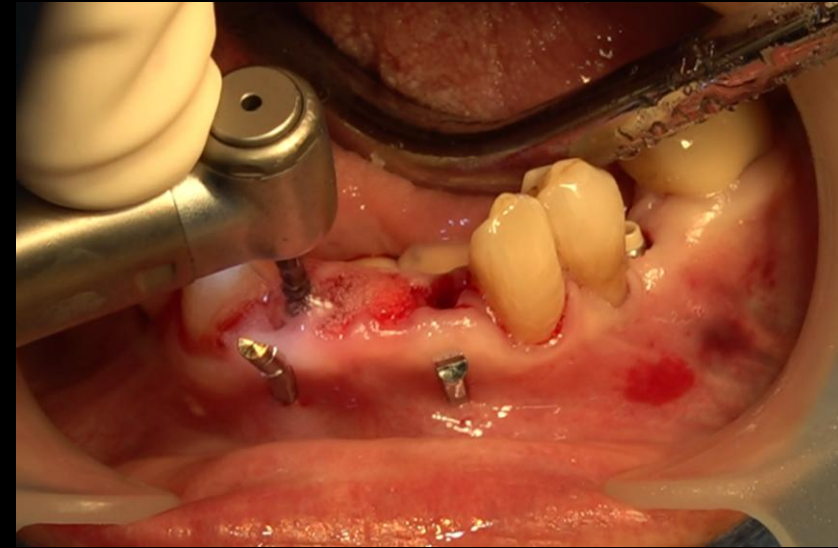
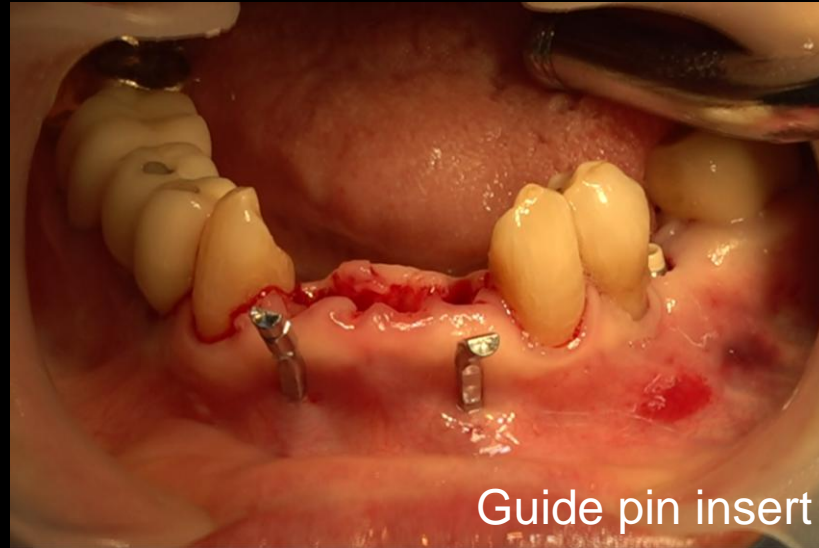
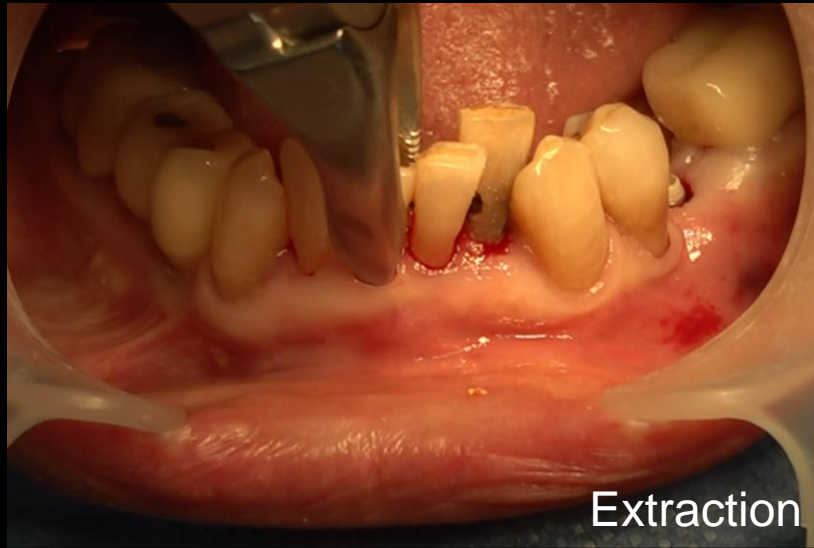
**Simple implant placement using bright TL Ø 2.5**



Pre-op

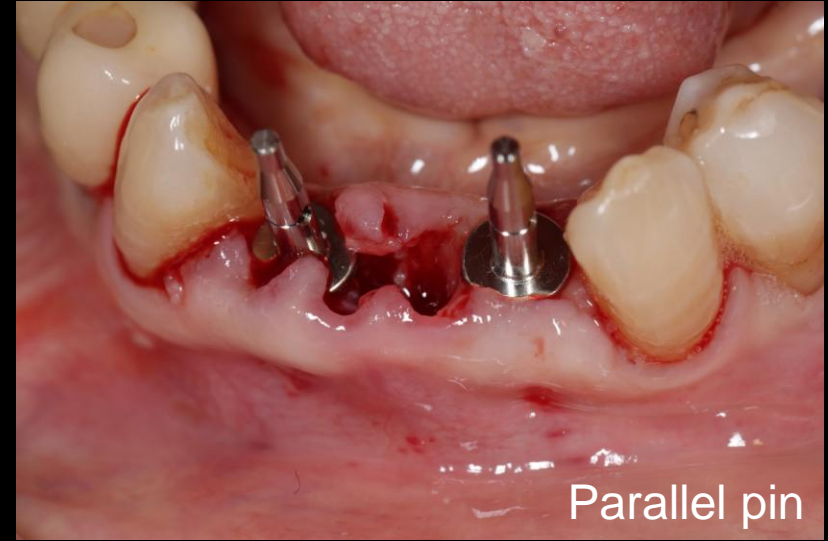
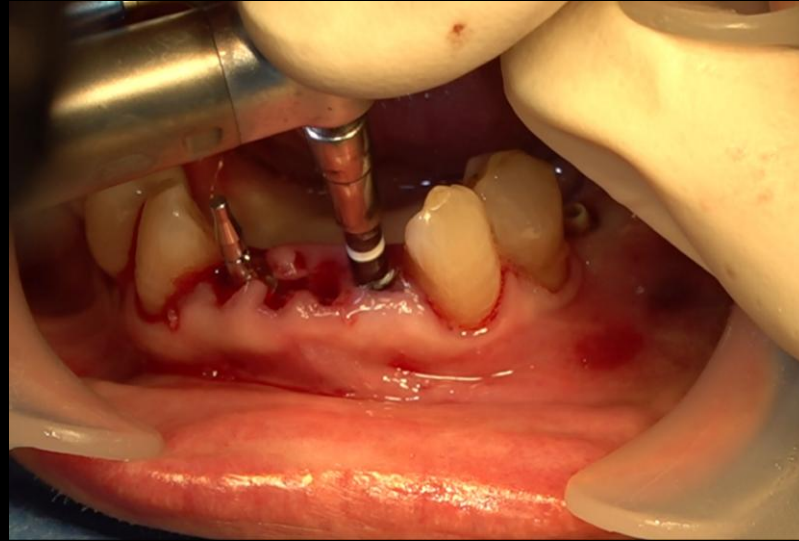
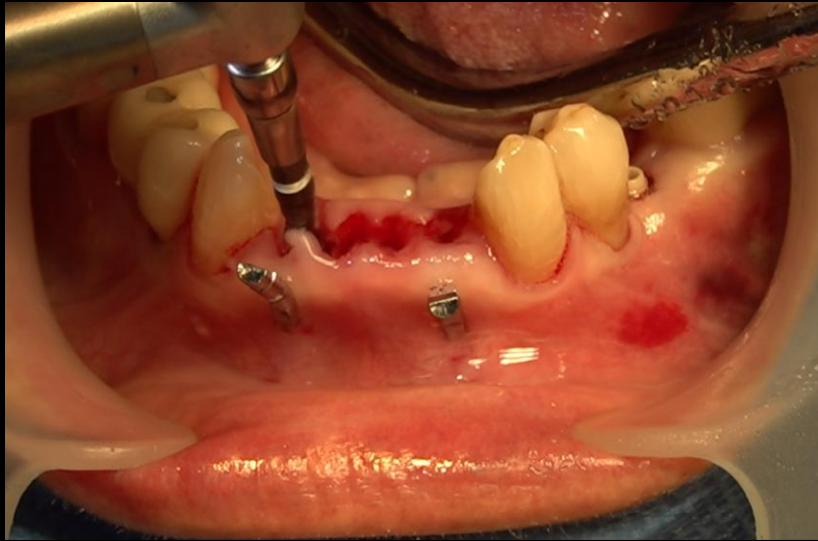
## Similar case

Simple implant placement using bright TL Ø 2.5



**Similar case**

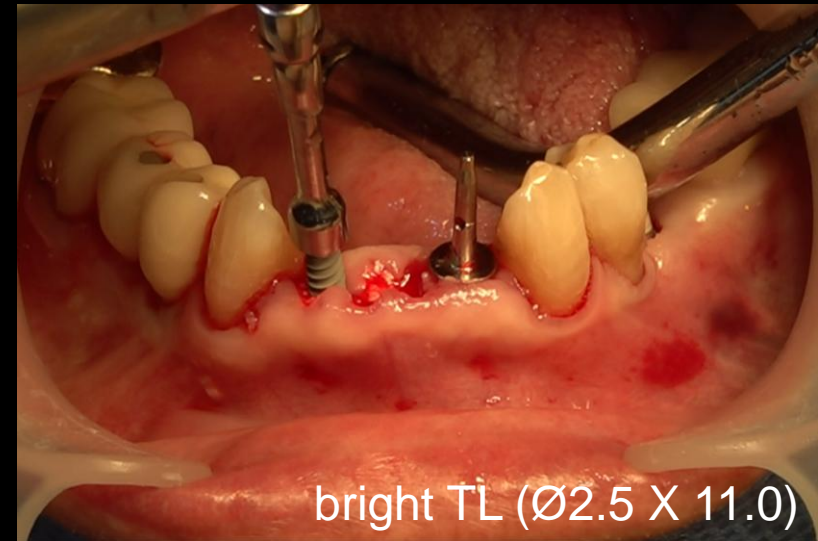
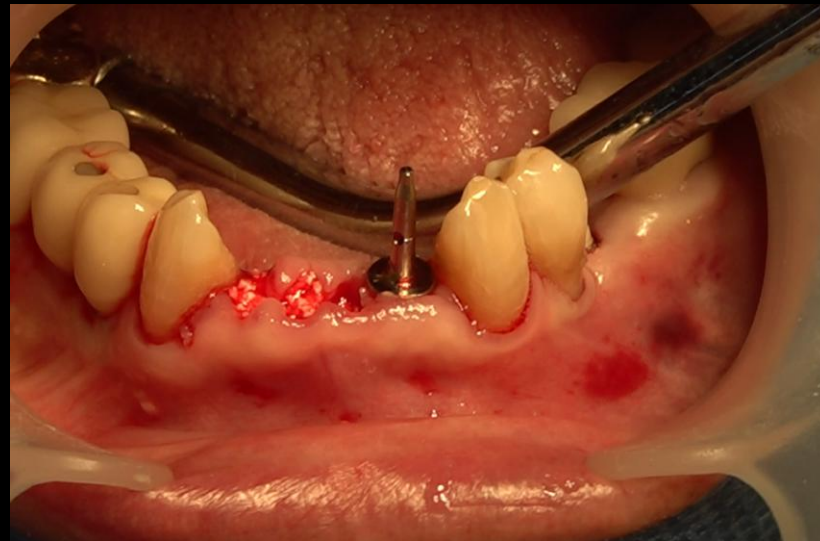
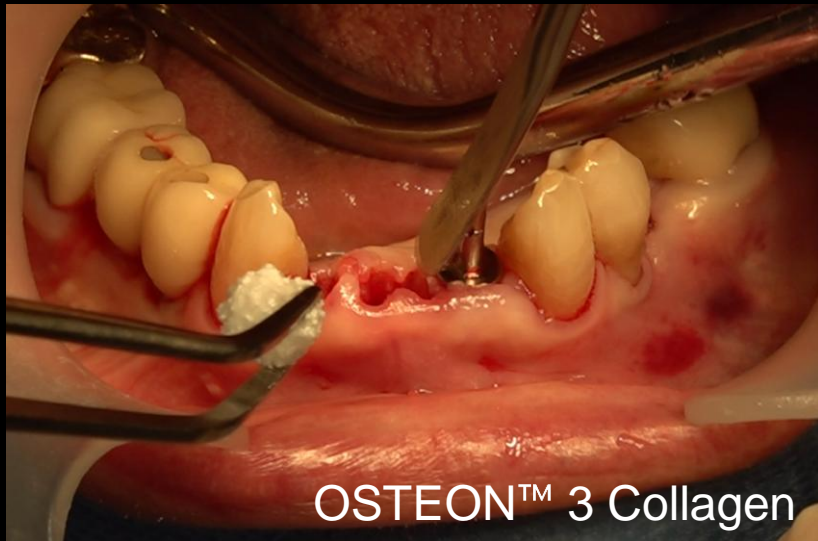
**Simple implant placement using bright TL Ø 2.5**



Surgery

## Similar case

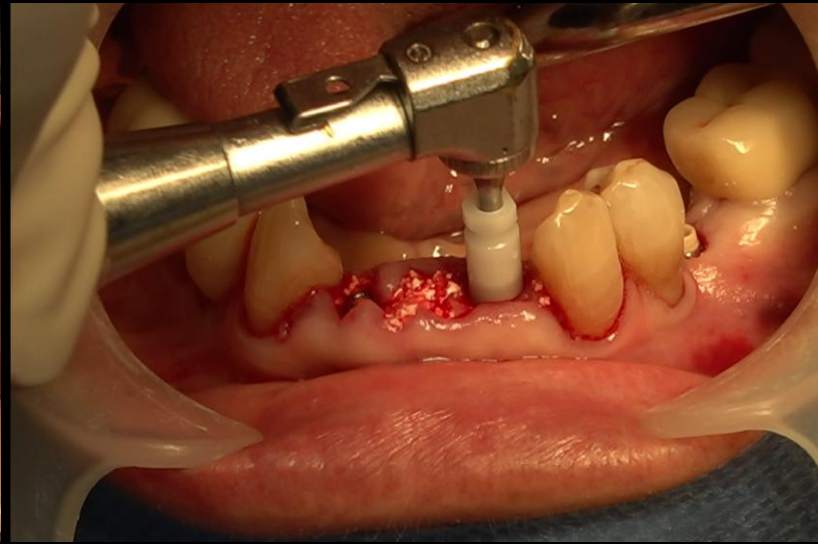
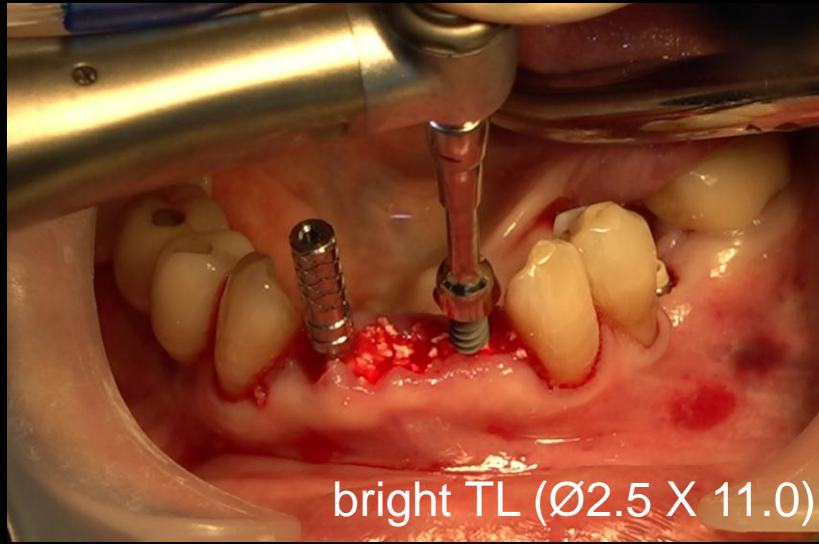
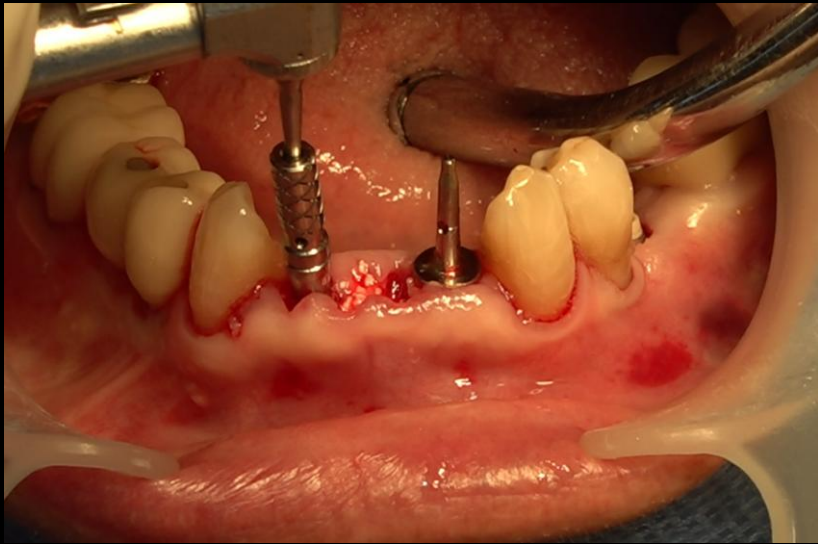
Simple implant placement using bright TL  $\varnothing$  2.5



Surgery

**Similar case**

**Simple implant placement using bright TL Ø 2.5**

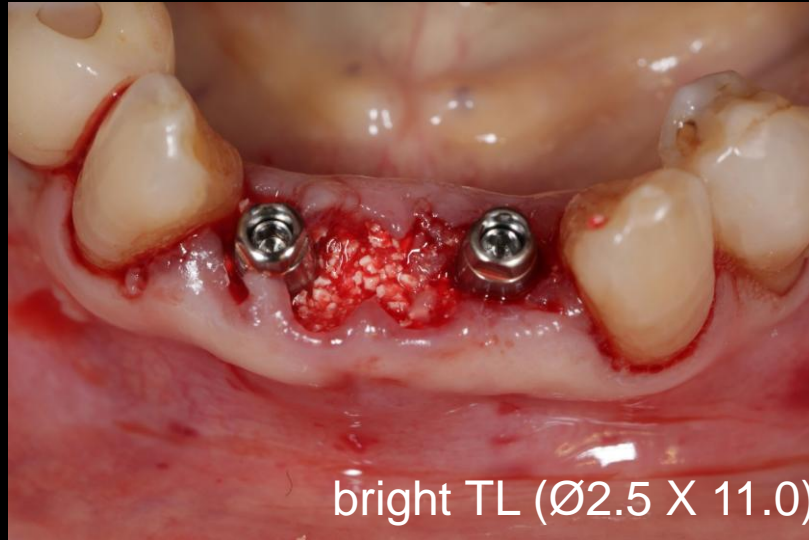
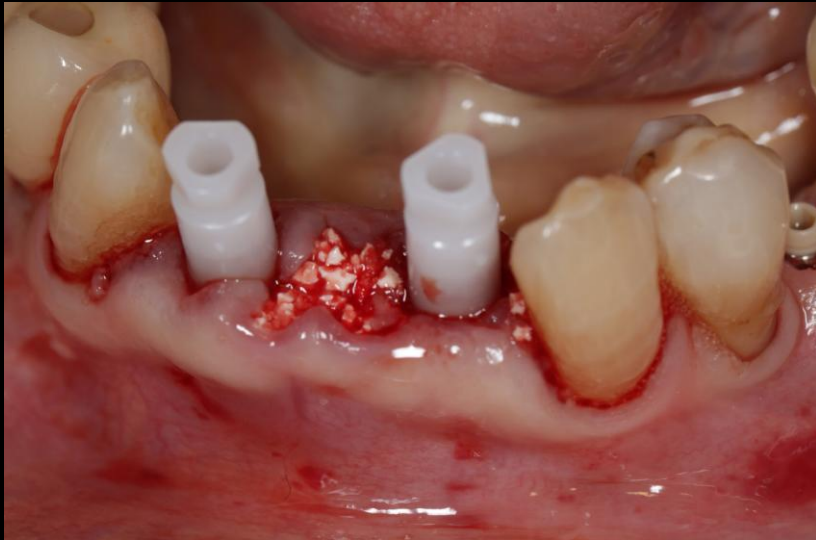


Surgery



**Similar case**

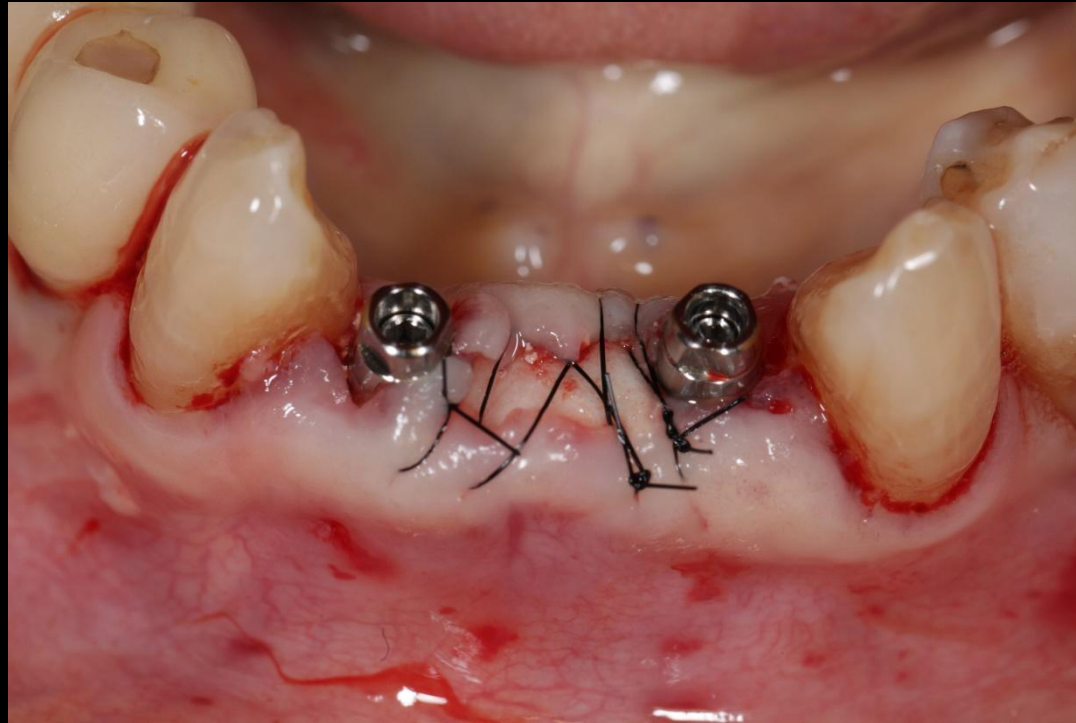
**Simple implant placement using bright TL Ø 2.5**



Surgery

**Similar case**

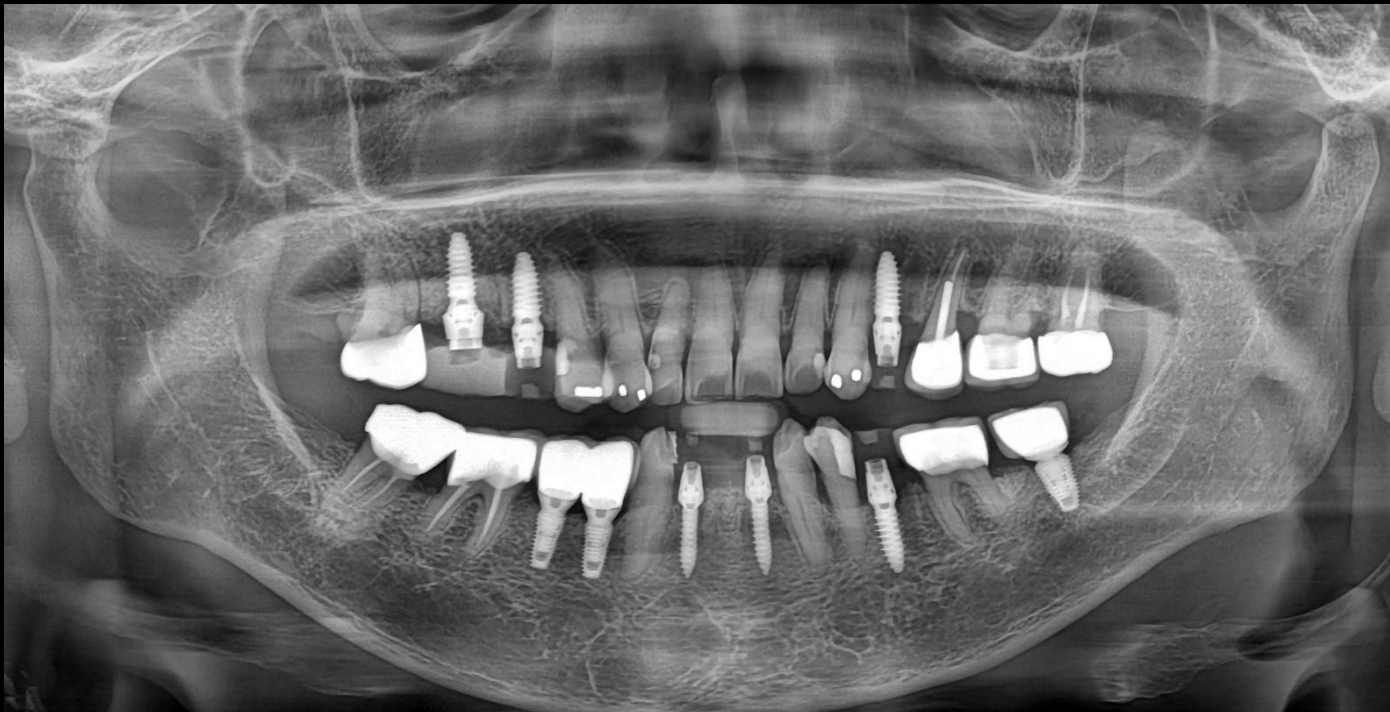
Simple implant placement using bright TL Ø 2.5



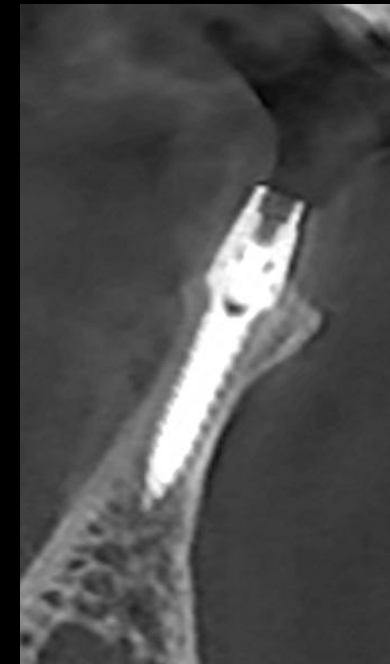
Post-op

**Similar case**

Simple implant placement using bright TL Ø 2.5



**#42**

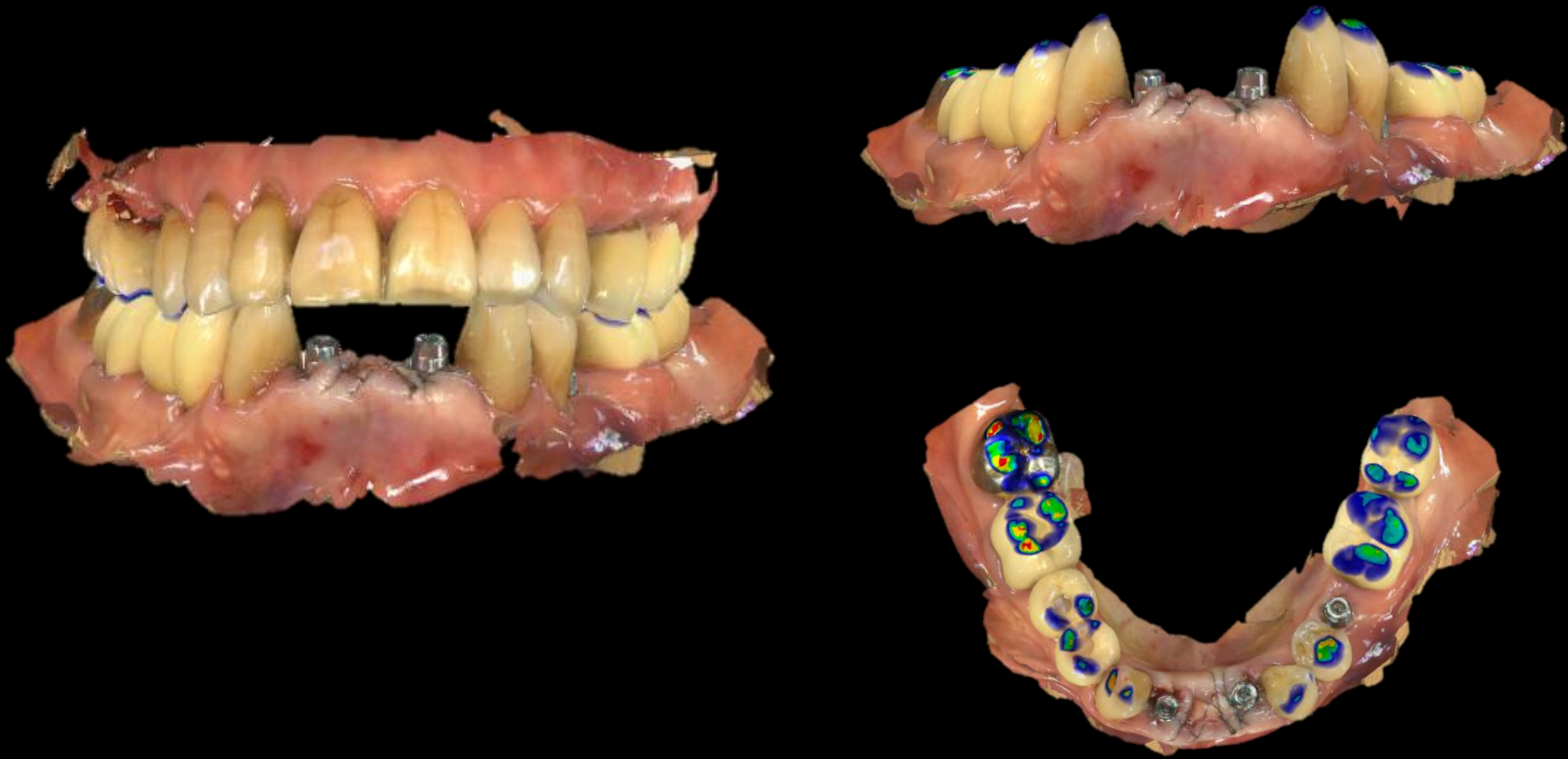


**#32**

Post-op

**Similar case**

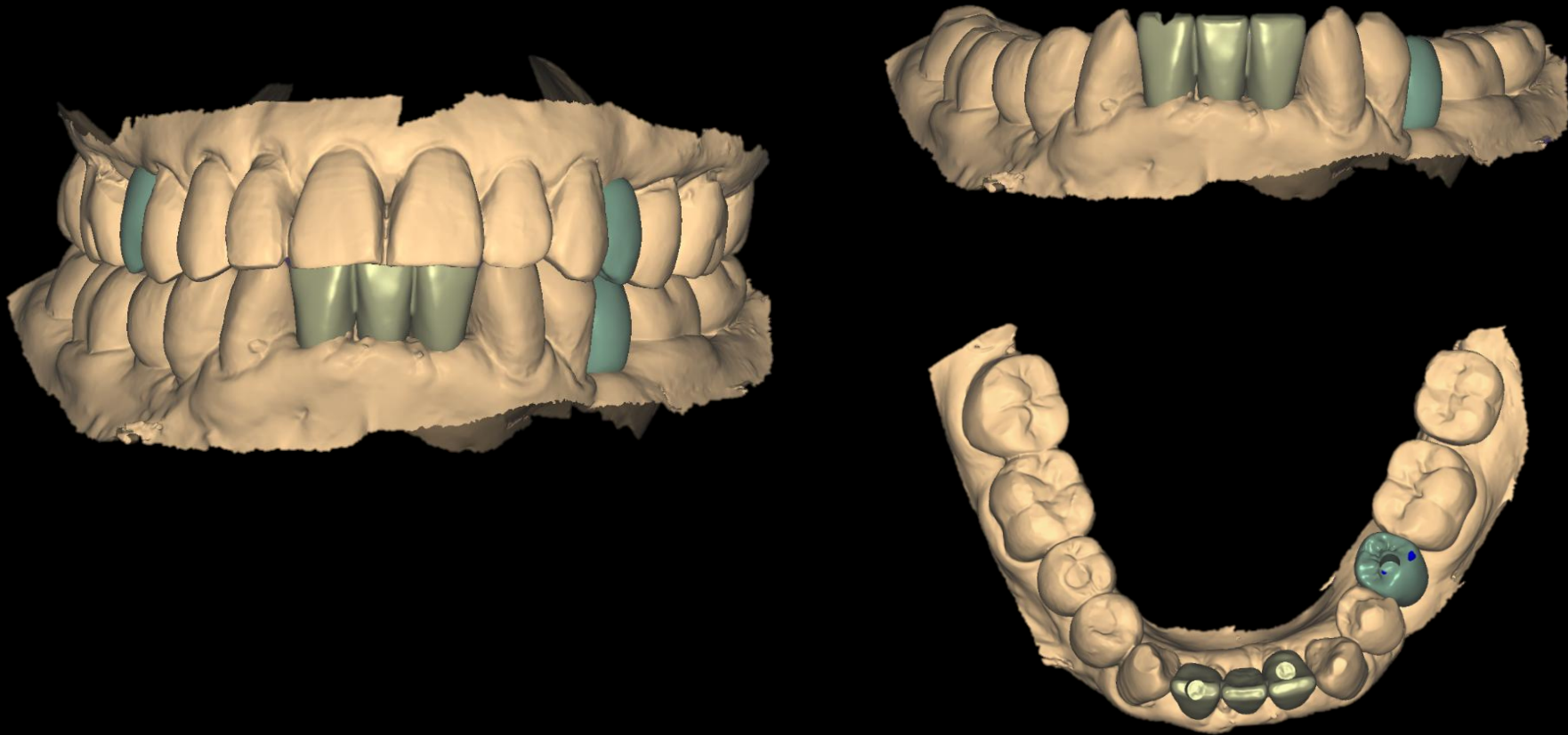
Simple implant placement using bright TL Ø 2.5



IOS

**Similar case**

Simple implant placement using bright TL Ø 2.5



CAD (Temporary)

**Similar case**

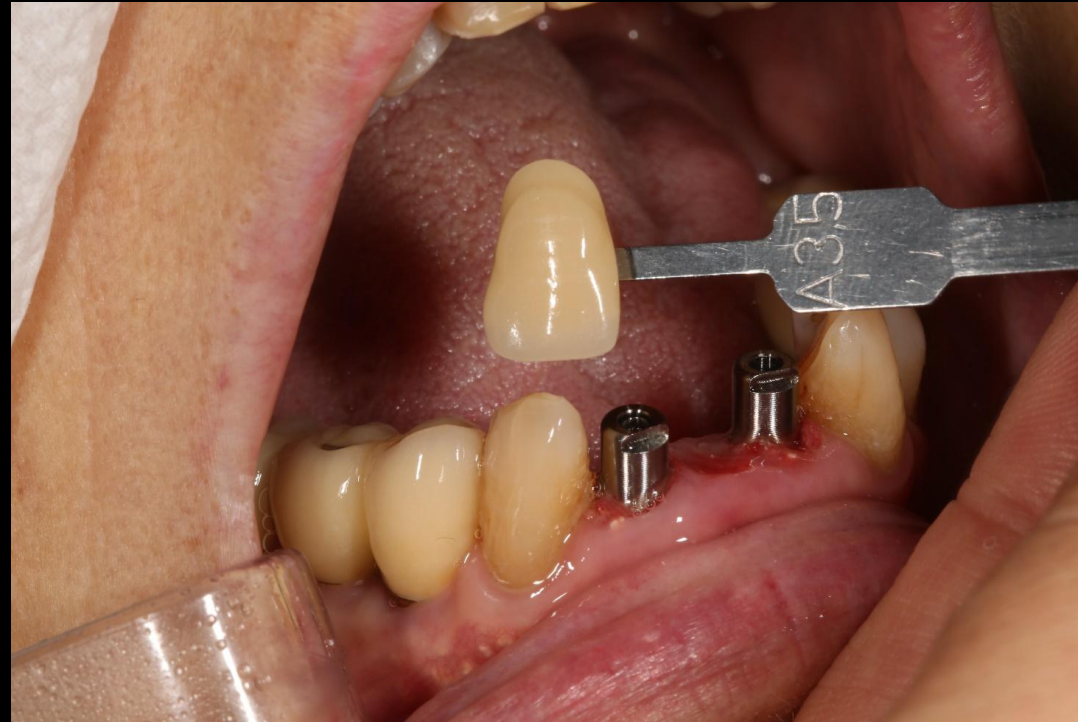
Simple implant placement using bright TL Ø 2.5



Provisional restoration

**Similar case**

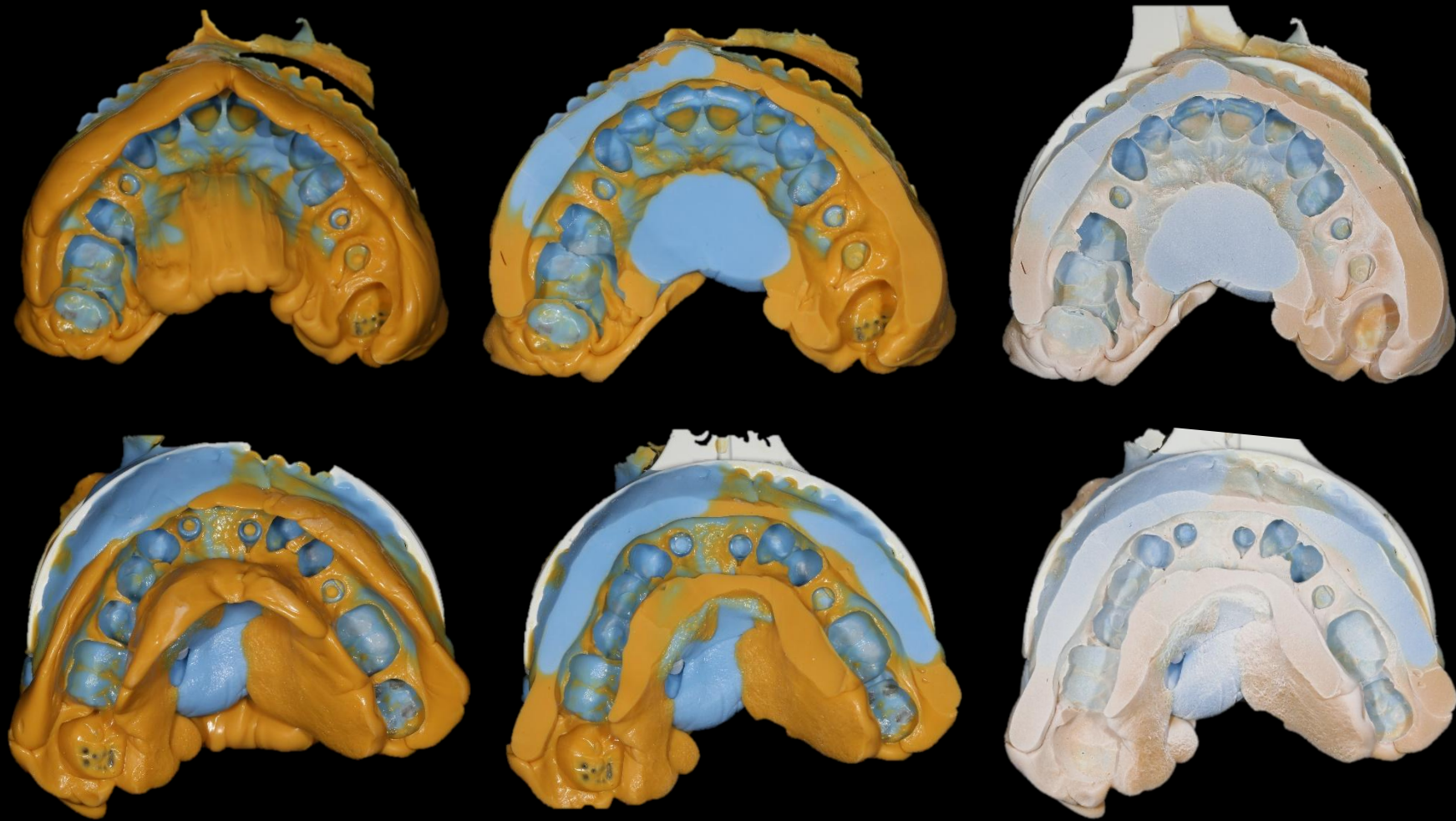
Simple implant placement using bright TL Ø 2.5



Shade taking

**Similar case**

Simple implant placement using bright TL Ø 2.5

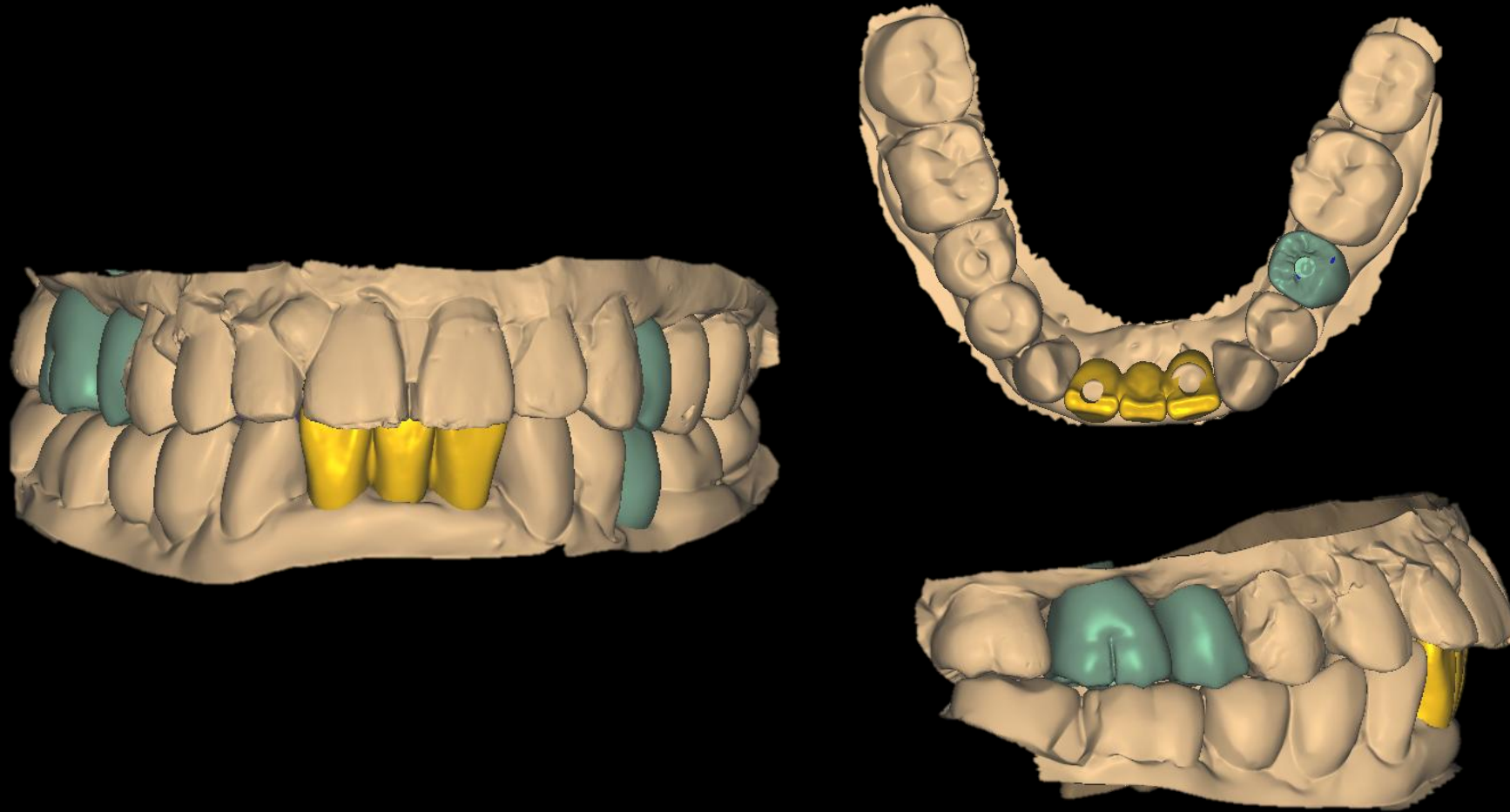


Bite Tray Impression & Impression Scan (B.T.S)



**Similar case**

Simple implant placement using bright TL Ø 2.5



CAD (Final restoration)

**Similar case**

Simple implant placement using bright TL Ø 2.5



Milling / Sintering / Glazing

**Similar case**

Simple implant placement using bright TL Ø 2.5



Final prosthesis

**Similar case**

Simple implant placement using bright TL Ø 2.5



Final prosthesis

