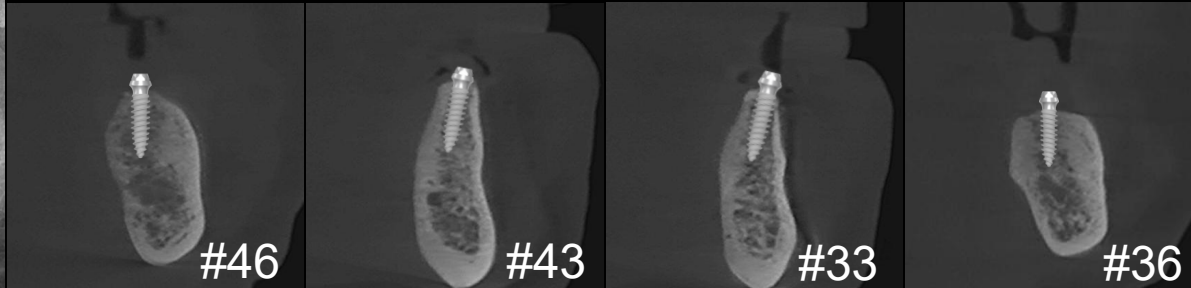
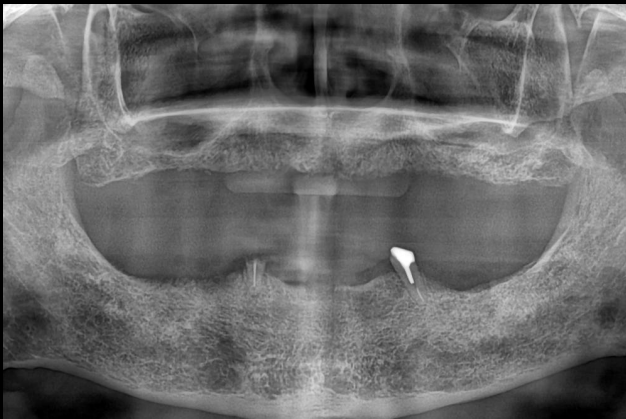




# Full arch rehabilitation



Dr. SM Chung  
2025.12.05. (Fri)

# Patient Information

**Age :** 76

**Sex :** Male

## Chief Complaint

: The denture I've been wearing for 20 years has come off and feels loose

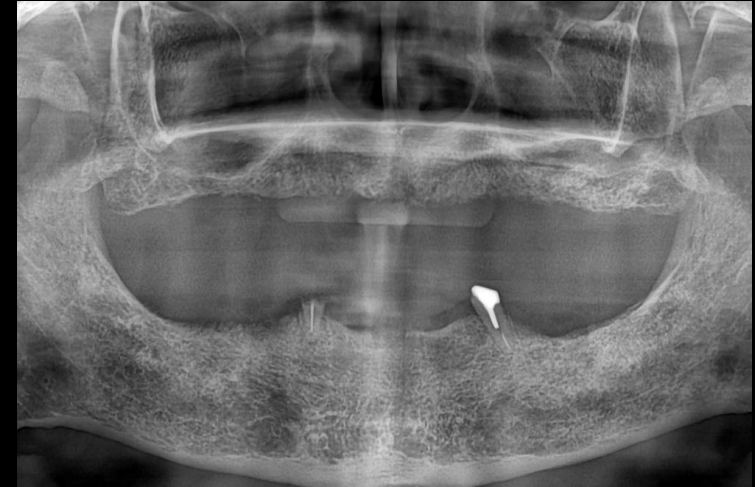
## Past Dental History

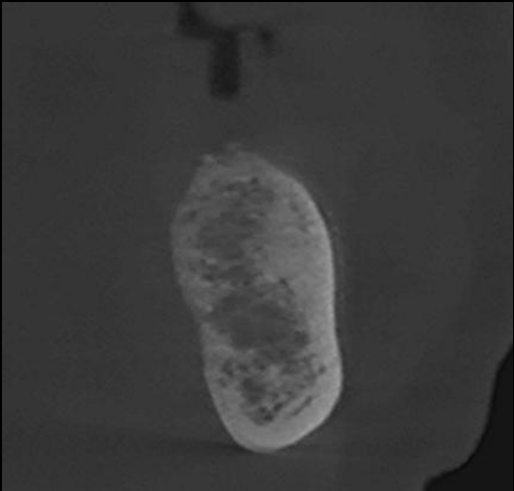
: History of denture use for 20 years

Endodontic treatment on #44, 34

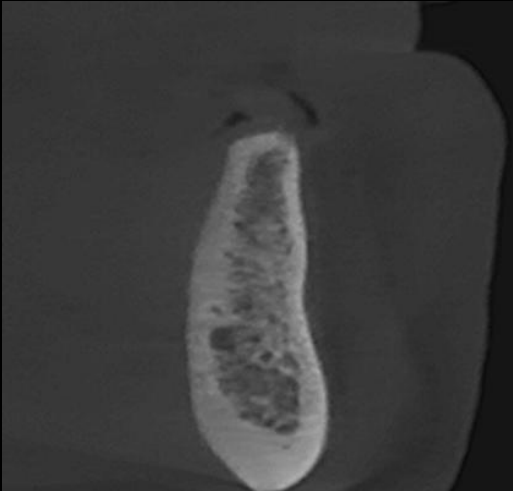
## Past Medical History

: On cholesterol medication including Aspirin

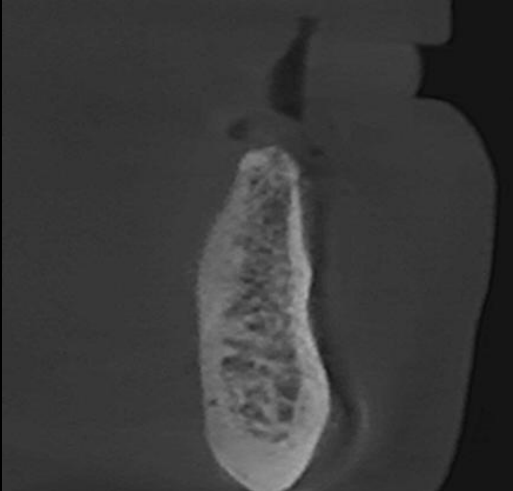




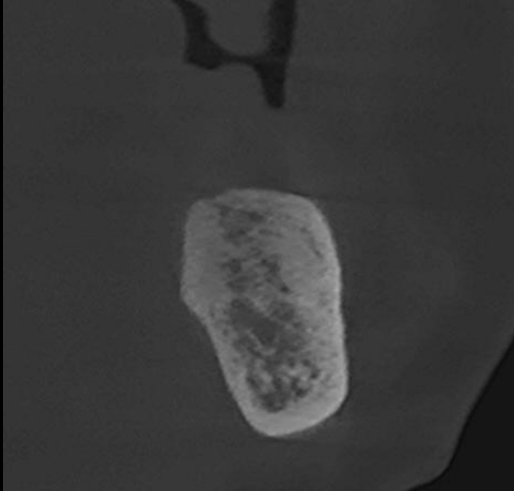
#46



#43



#33



#36

Pre-op



## Surgery Plan (#46,43,33,36)



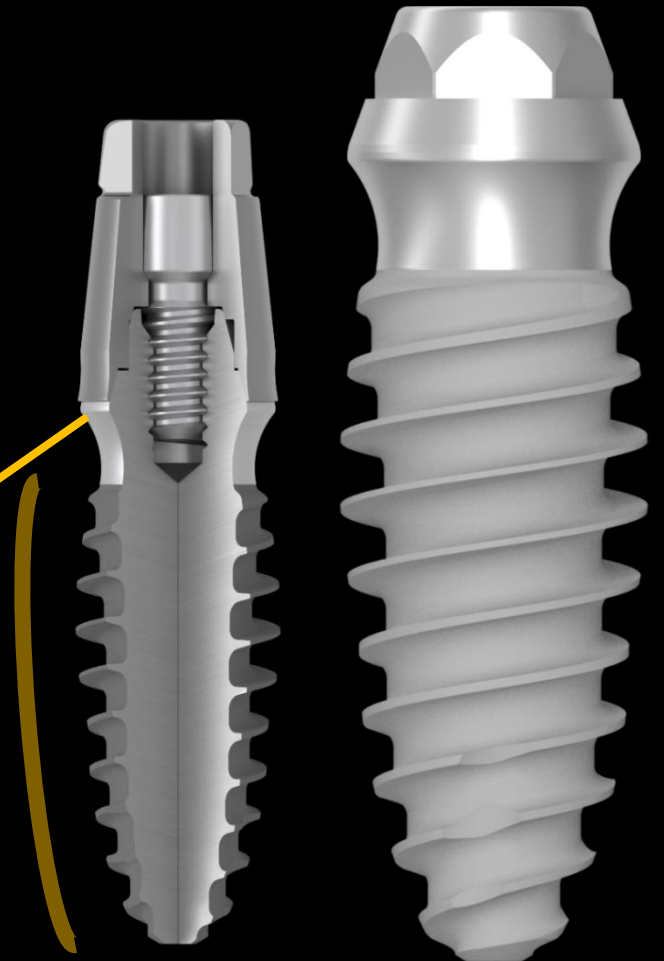
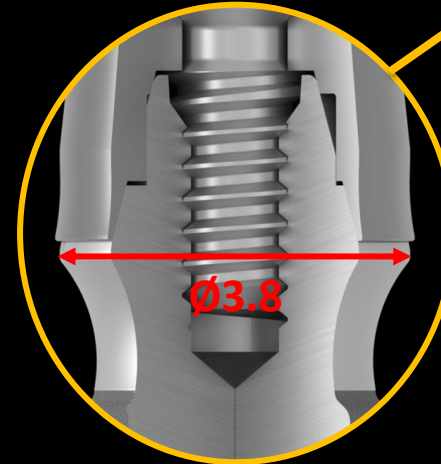
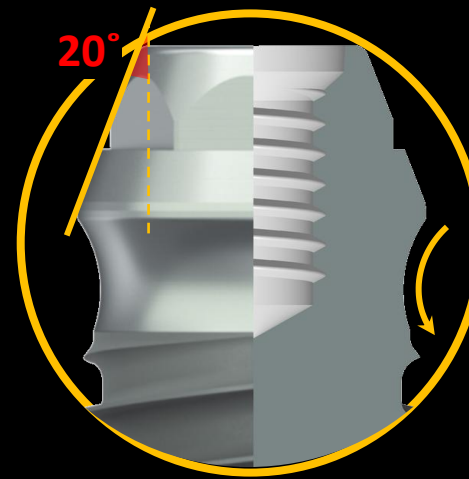
- Implantation on #46,43,33,36 using **bright Tissue Level**
- Use Duplicated and **3D-printed Denture** as a **surgical guide**
- Tissue augmentation using **Collagen Graft x1D, Collagen Graft x2D**



**Duplicated and 3D-printed Denture for use as a surgical guide**

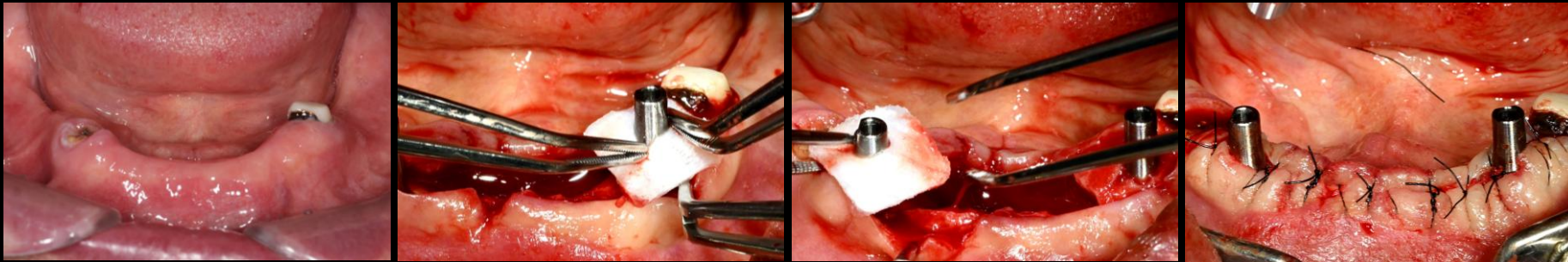
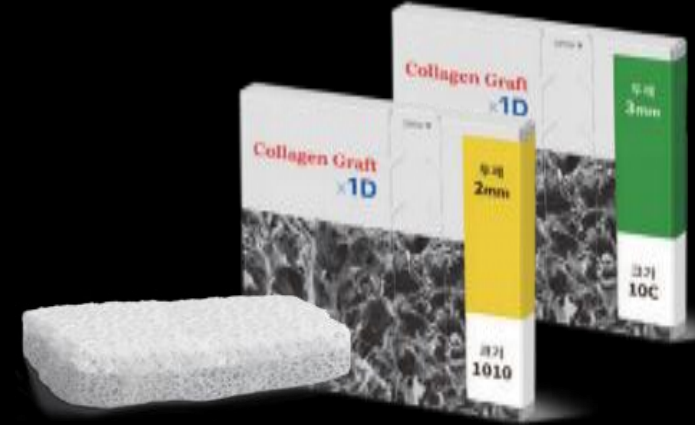
# bright Implant **Tissue Level**

- ✓ **Narrow, Yet Strong**
  - Excellent Joint Stability
- ✓ **20° External Tapered & External Hex**
  - Excellent Joint Stability
  - Multi Purpose and Easy-to-Use Connection on Trans-Mucosa
- ✓ **Concaved Neck**
  - Better Contour Management for Soft Tissue
- ✓ **Dome Shaped Body**
  - Better Primary Stability
  - Better BIC on Cancellous Bone
  - Marginal Bone Preservation
- ✓ **Ø3.8 Single Platform**
  - One Connection / One Prosthetic Line



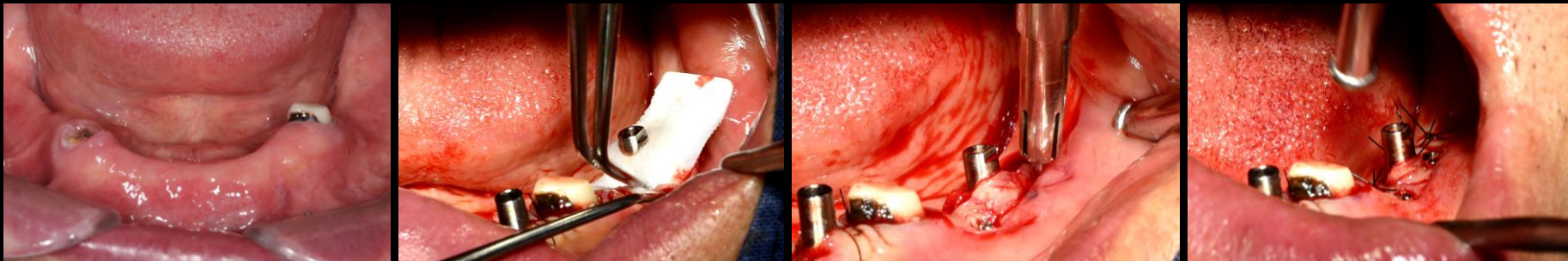
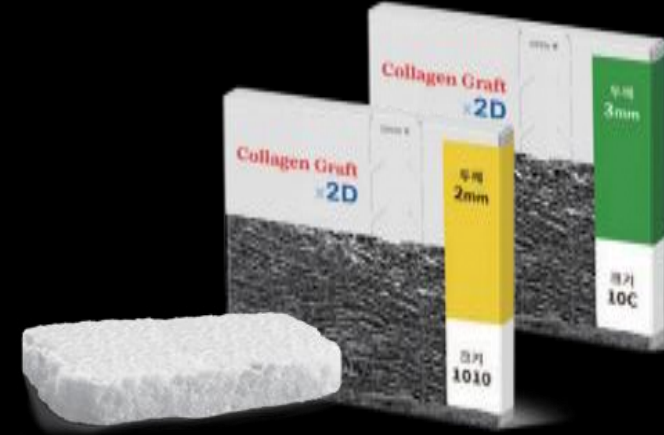
# Collagen Graft x1D

- Ridge preservation
- Porcine tendon derived type I collagen
- Faster soft tissue healing by epithelization



# Collagen Graft x2D

- Bilayer structure: x2 Dense & porous layers
- Highly pure Type I Collagen (from porcine)
- Promoting epithelialization via accelerated angiogenesis



## Similar case 1

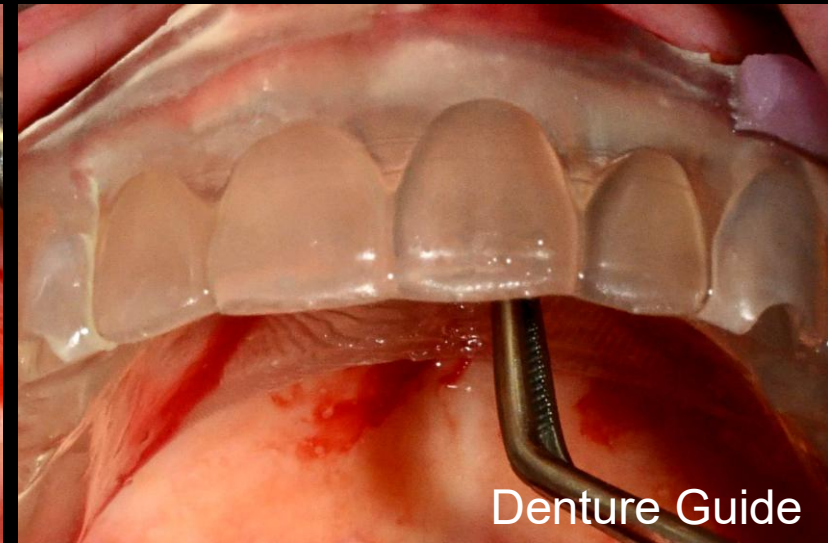
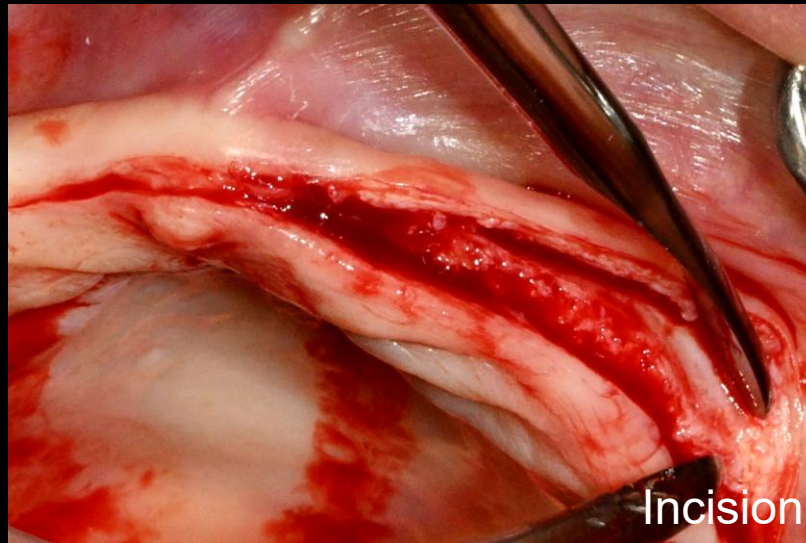
Full arch implantation on severely resorbed narrow ridge



Pre-op

## Similar case 1

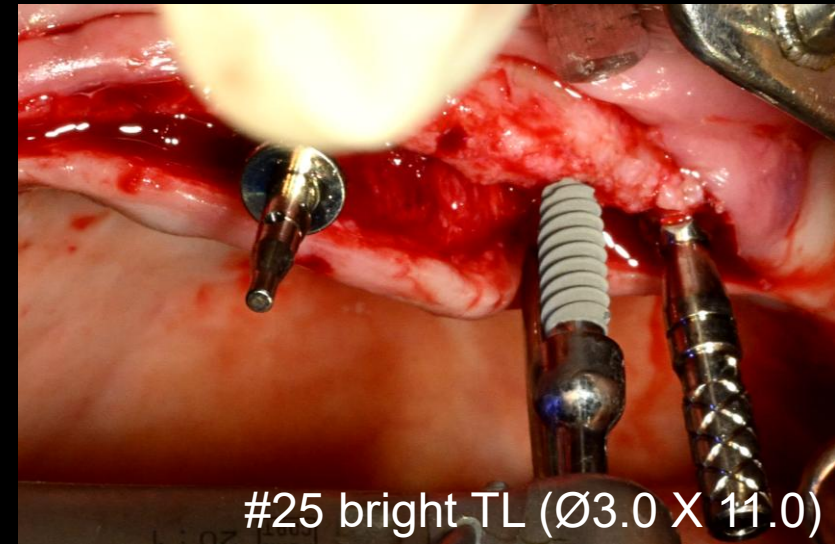
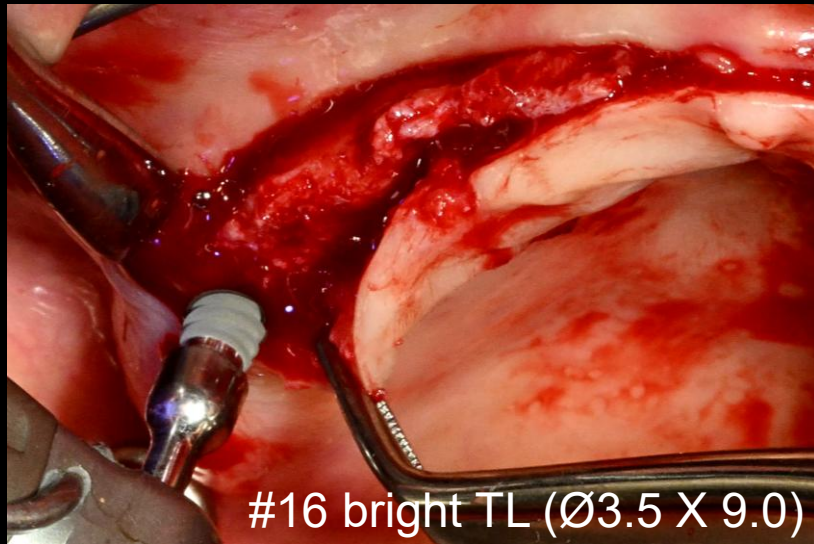
## Full arch implantation on severely resorbed narrow ridge



Surgery

## Similar case 1

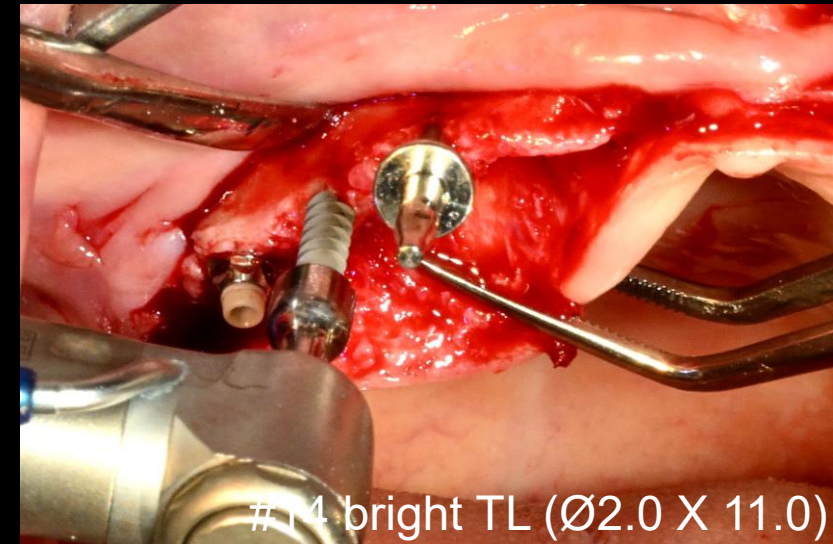
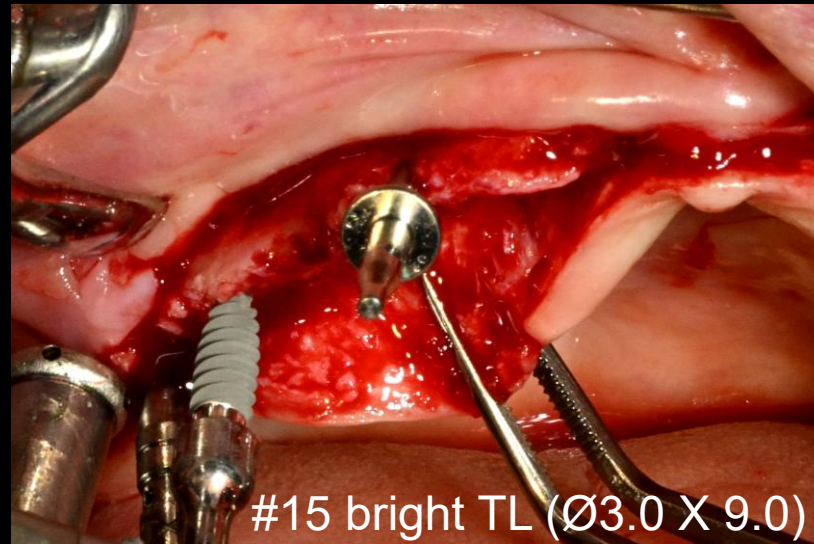
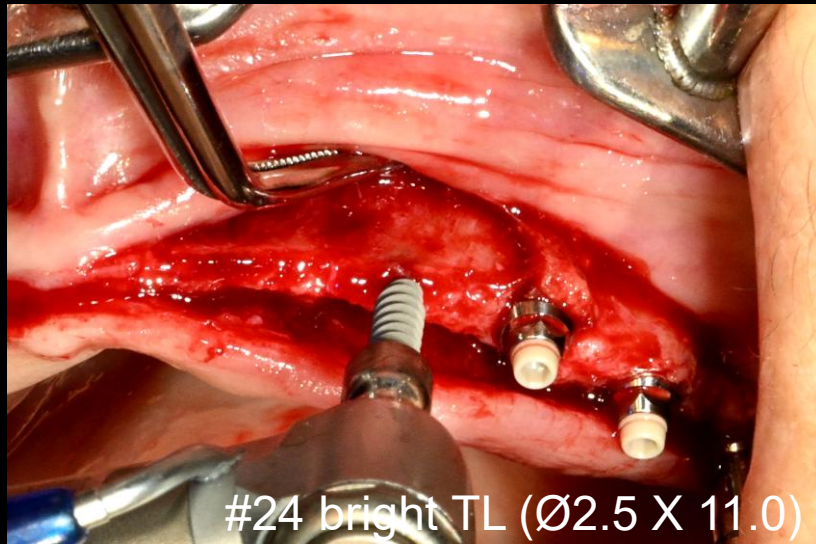
Full arch implantation on severely resorbed narrow ridge



Surgery

## Similar case 1

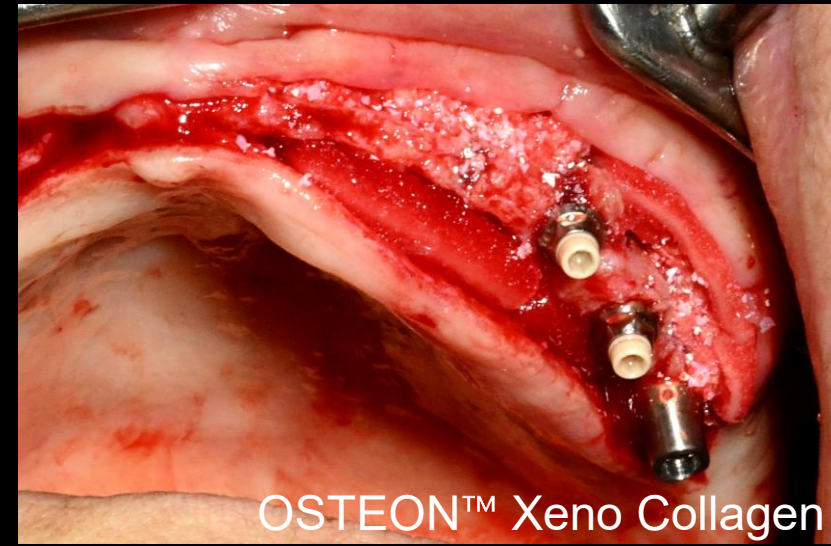
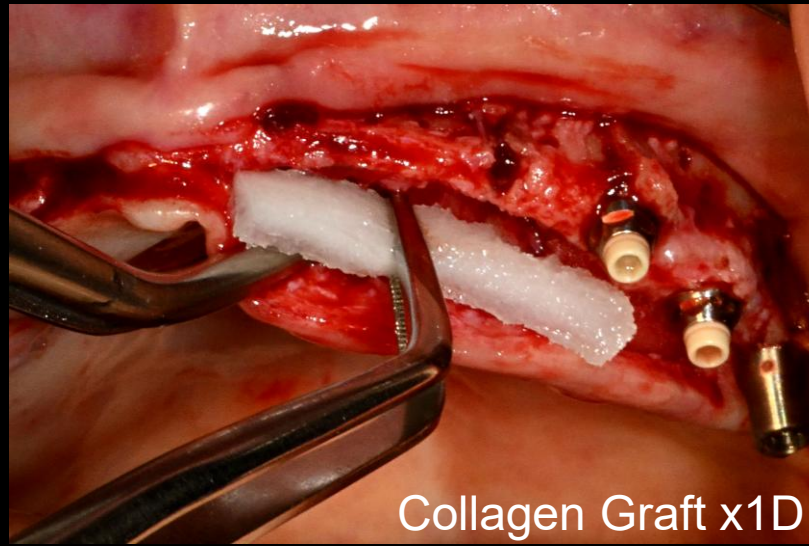
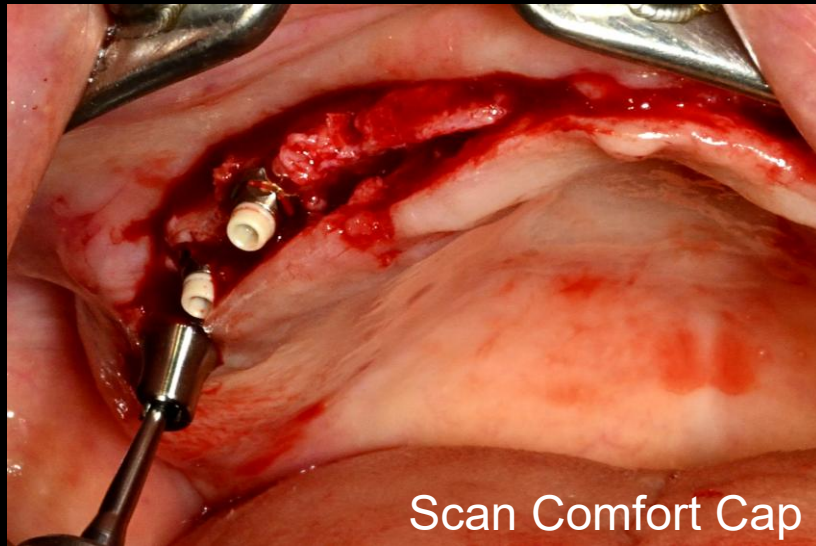
Full arch implantation on severely resorbed narrow ridge



Surgery

## Similar case 1

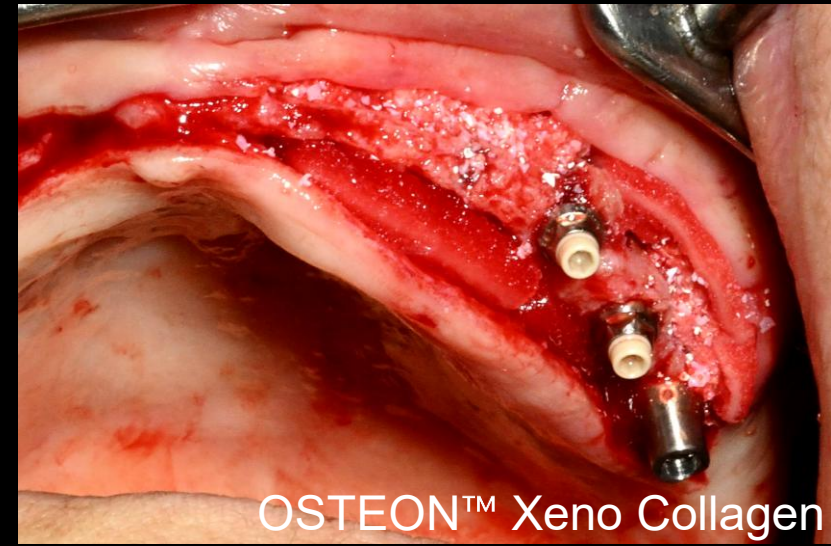
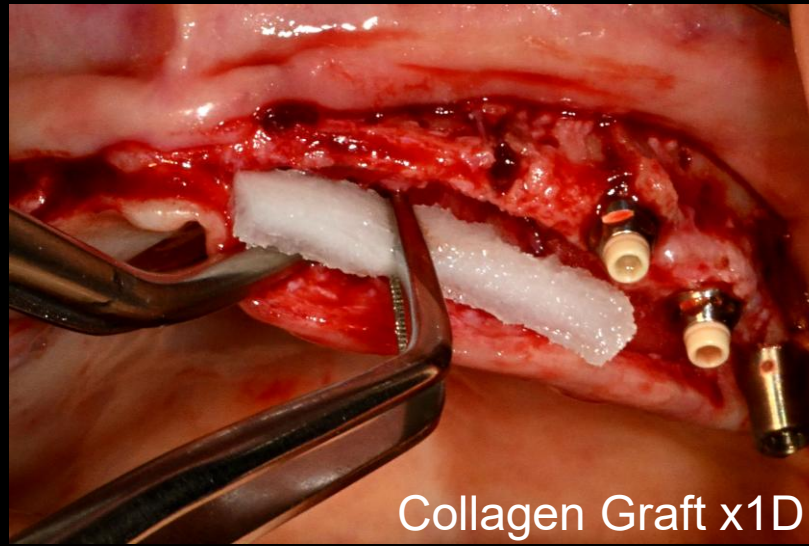
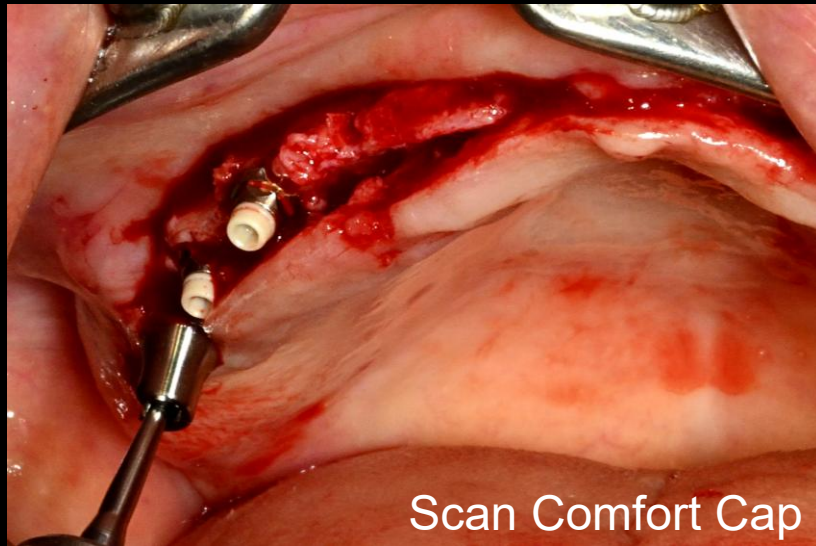
Full arch implantation on severely resorbed narrow ridge



Surgery

## Similar case 1

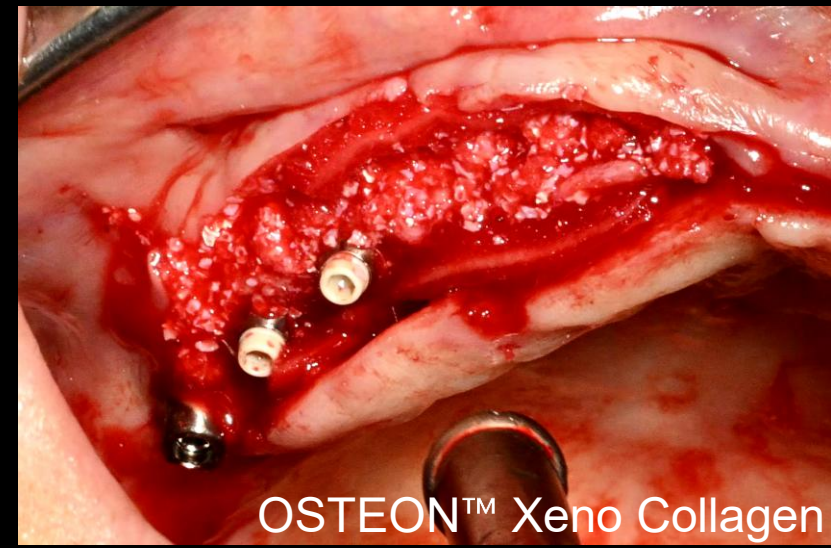
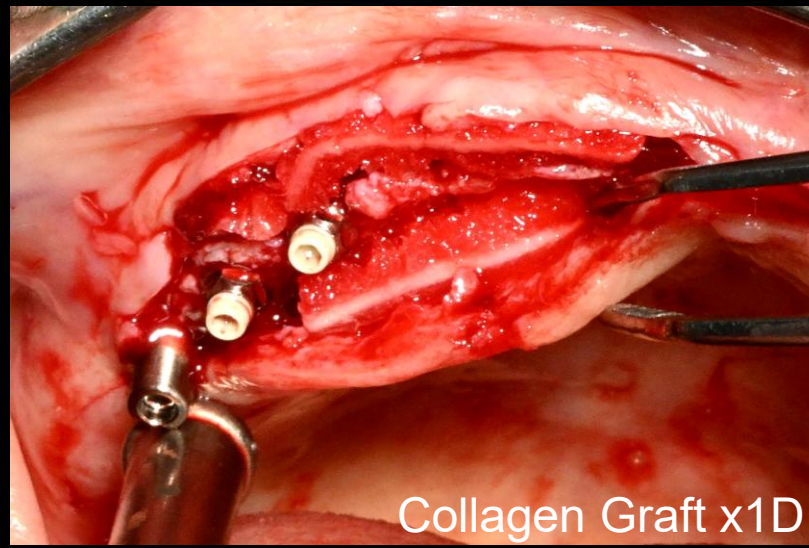
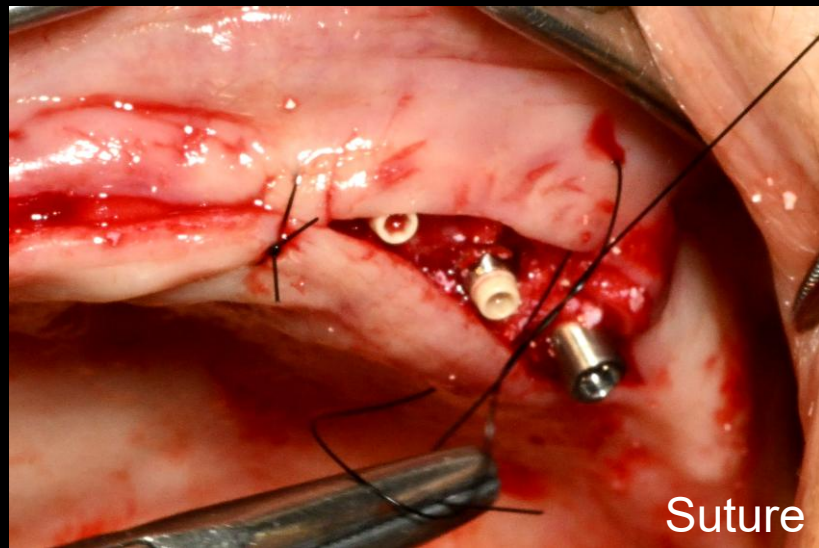
Full arch implantation on severely resorbed narrow ridge



Surgery

## Similar case 1

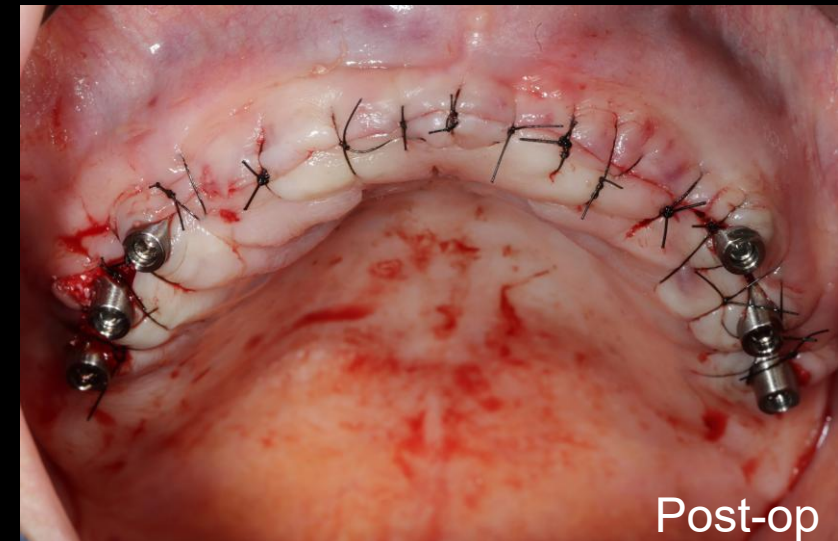
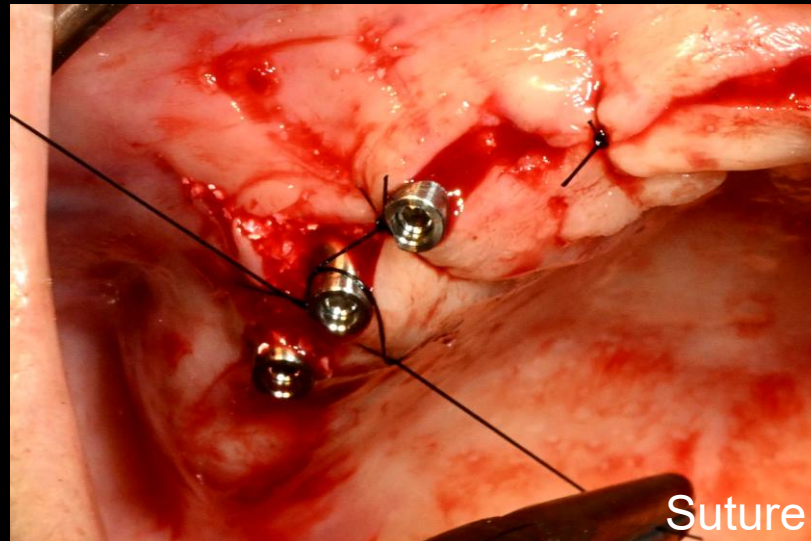
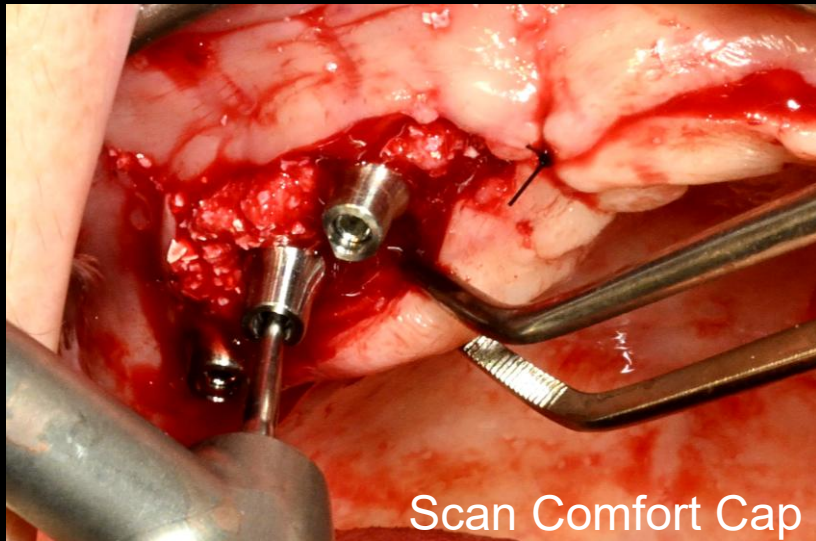
Full arch implantation on severely resorbed narrow ridge



Surgery

## Similar case 1

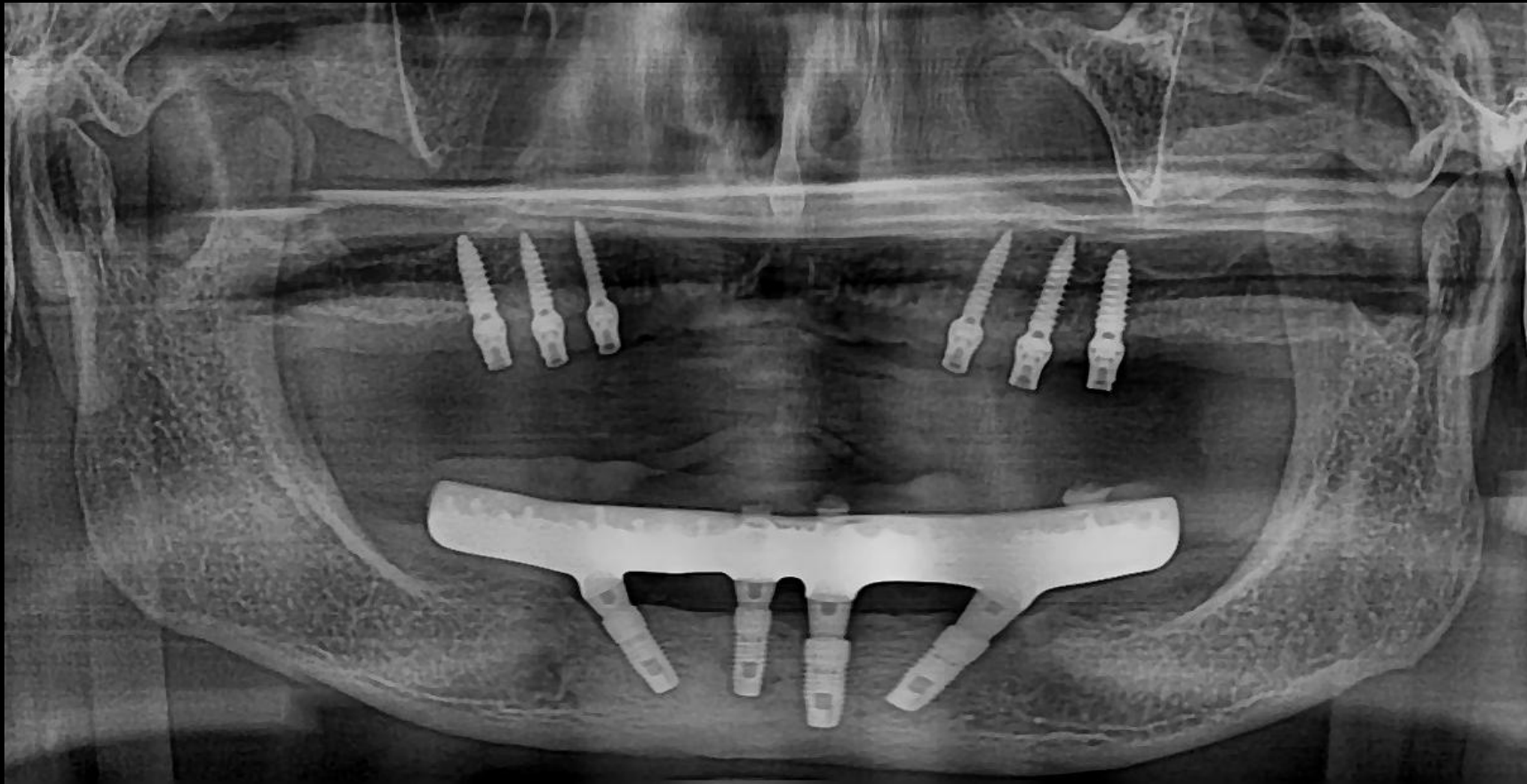
Full arch implantation on severely resorbed narrow ridge



Surgery

## Similar case 1

Full arch implantation on severely resorbed narrow ridge



Post-op

## Similar case 1

## Full arch implantation on severely resorbed narrow ridge



#16



#15



#14



#24



#25



#26



#16



#15



#14



#24



#25

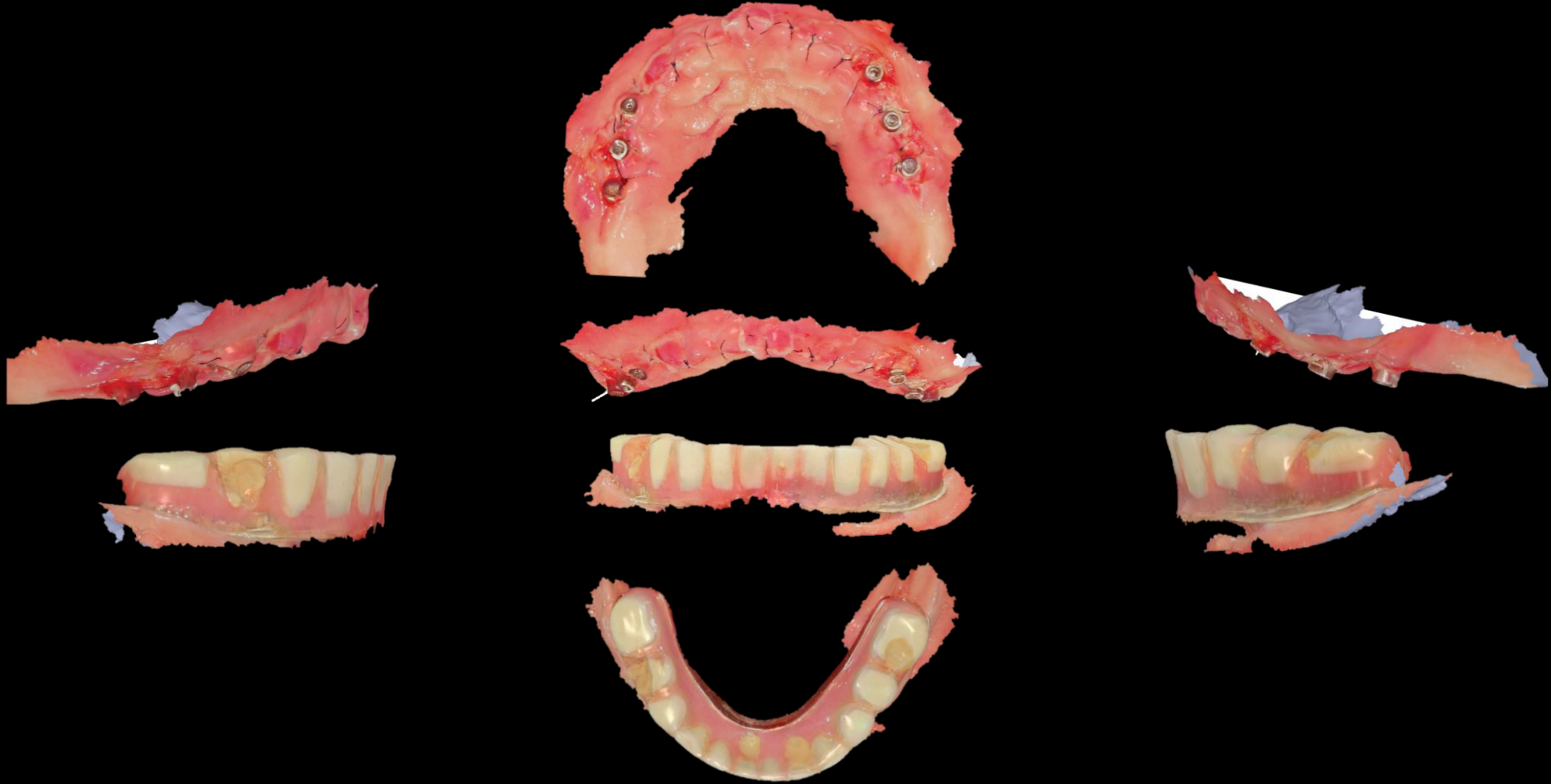


#26

Pre-op CT / Post-op CT

## Similar case 1

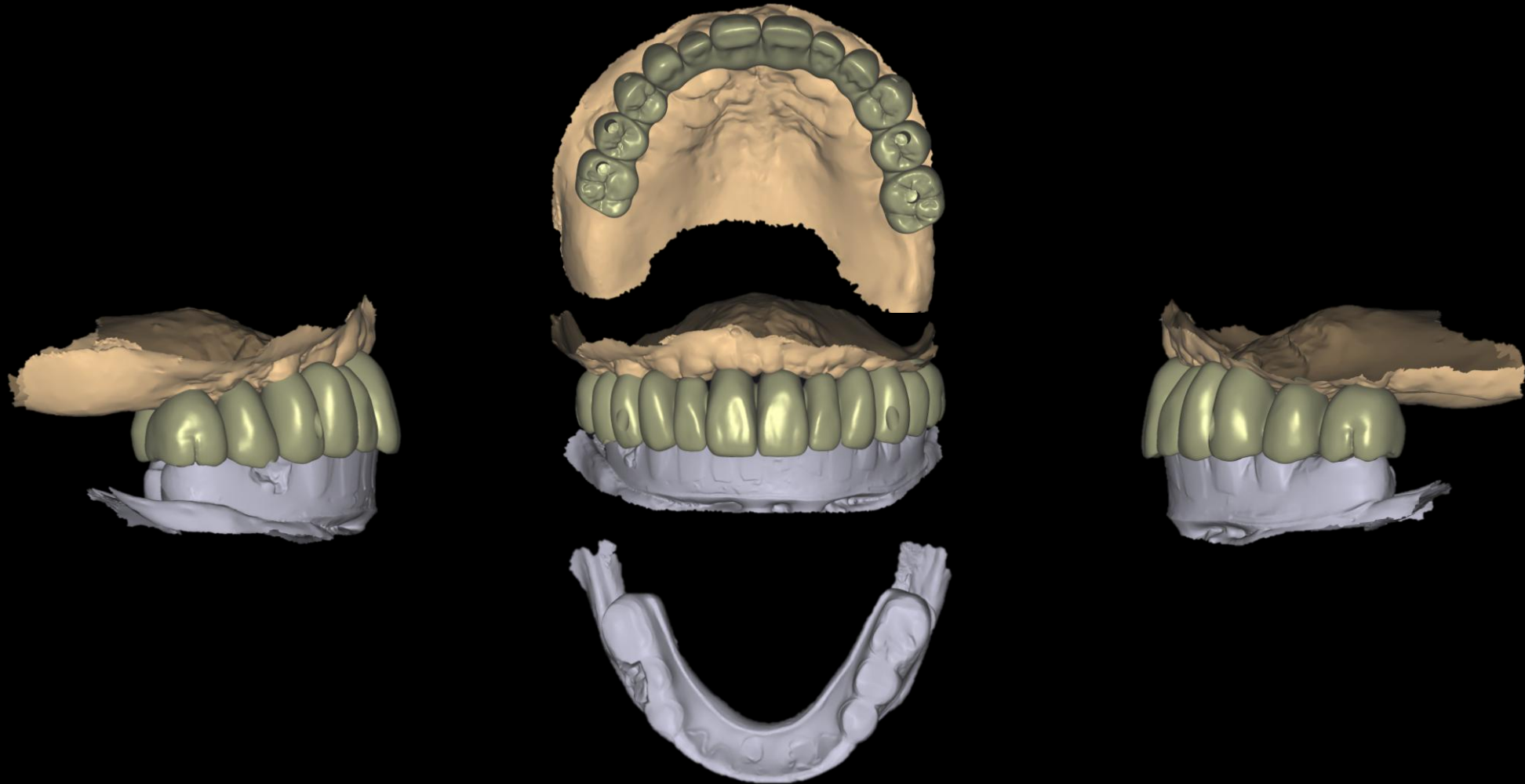
Full arch implantation on severely resorbed narrow ridge



Intra Oral Scan

## Similar case 1

Full arch implantation on severely resorbed narrow ridge



CAD (Temp)

## Similar case 1

Full arch implantation on severely resorbed narrow ridge



Provisional restoration  
(after 9 days)

## Similar case 1

Full arch implantation on severely resorbed narrow ridge



Healing : 3 weeks

## Similar case 1

Full arch implantation on severely resorbed narrow ridge



#16



#15



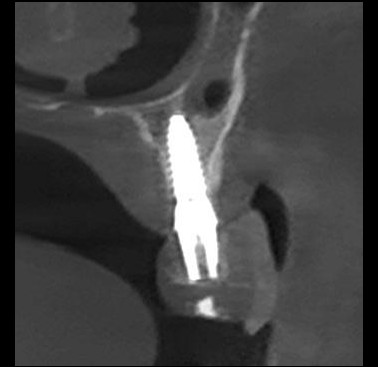
#14



#24



#25



#26

Healing CT : 3 weeks

