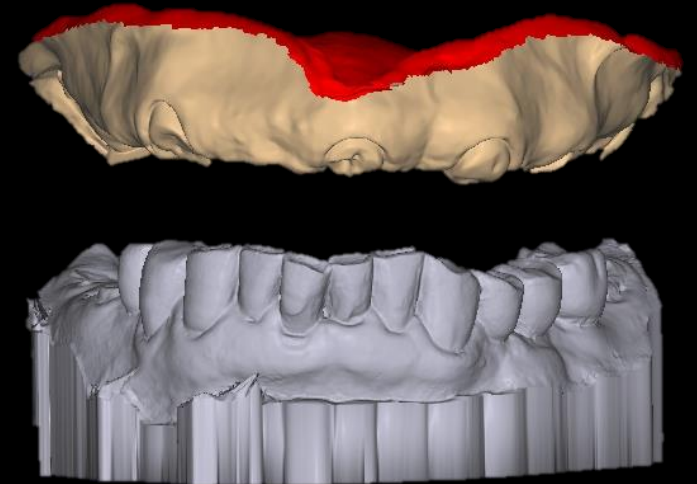
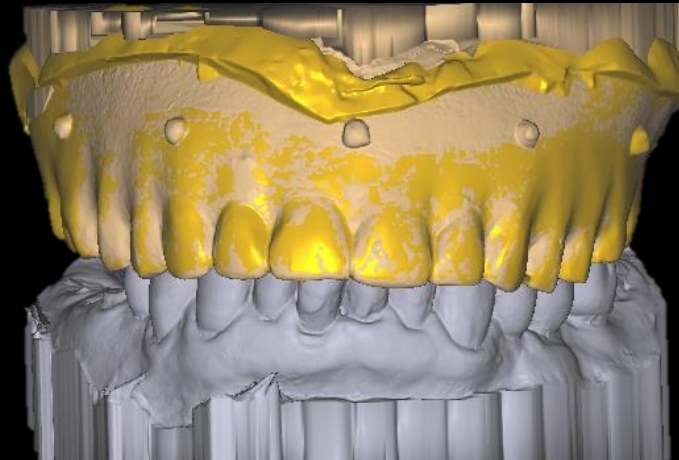




# Full Arch Rehabilitation Using Digital System

Dr. SM Chung  
2021.5.7 (Fri)

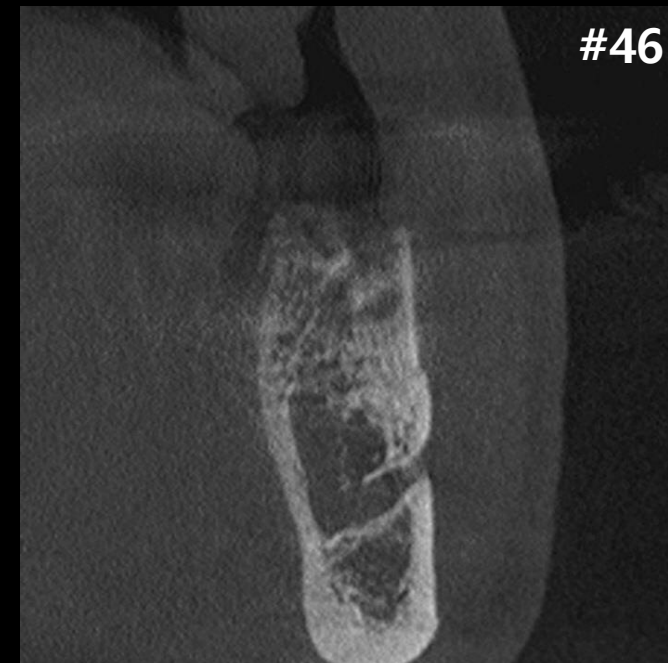




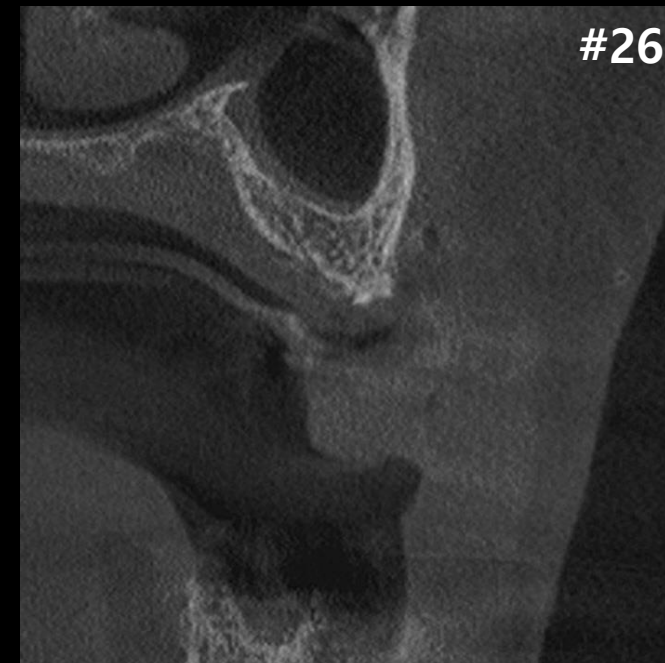
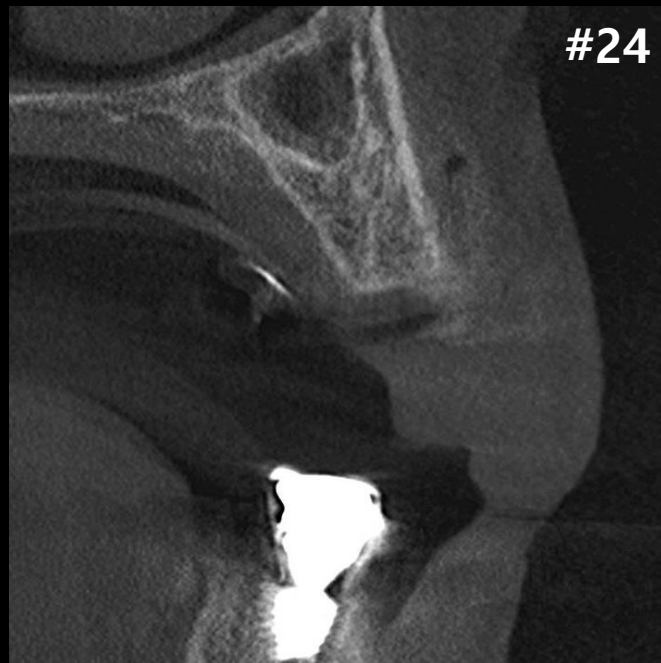
Oral exam (2021-04-07)













**Extraoral Photo (2021-04-15)**





Oral exam (2021-04-15)



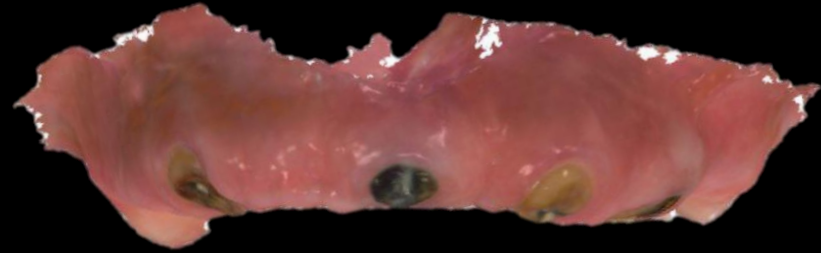


Extraction (2021-04-22)





## Intraoral Scanning

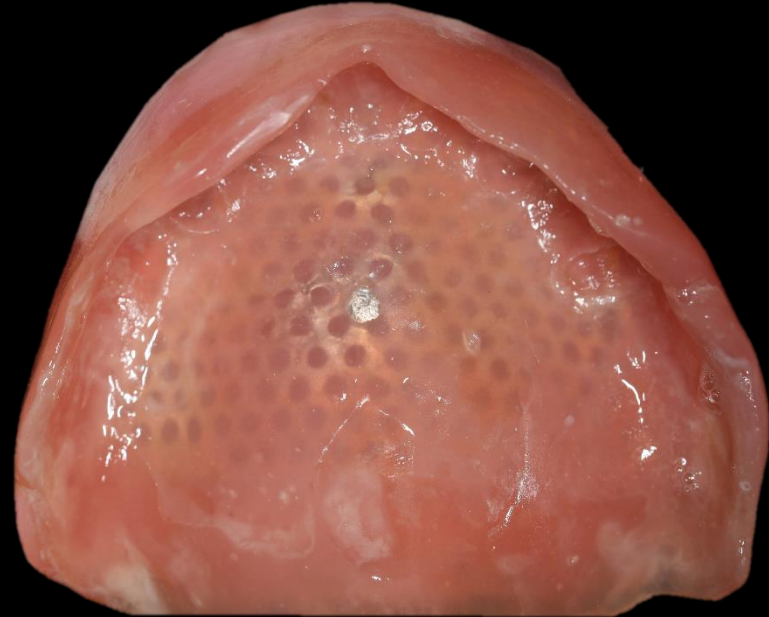




## Complete Denture

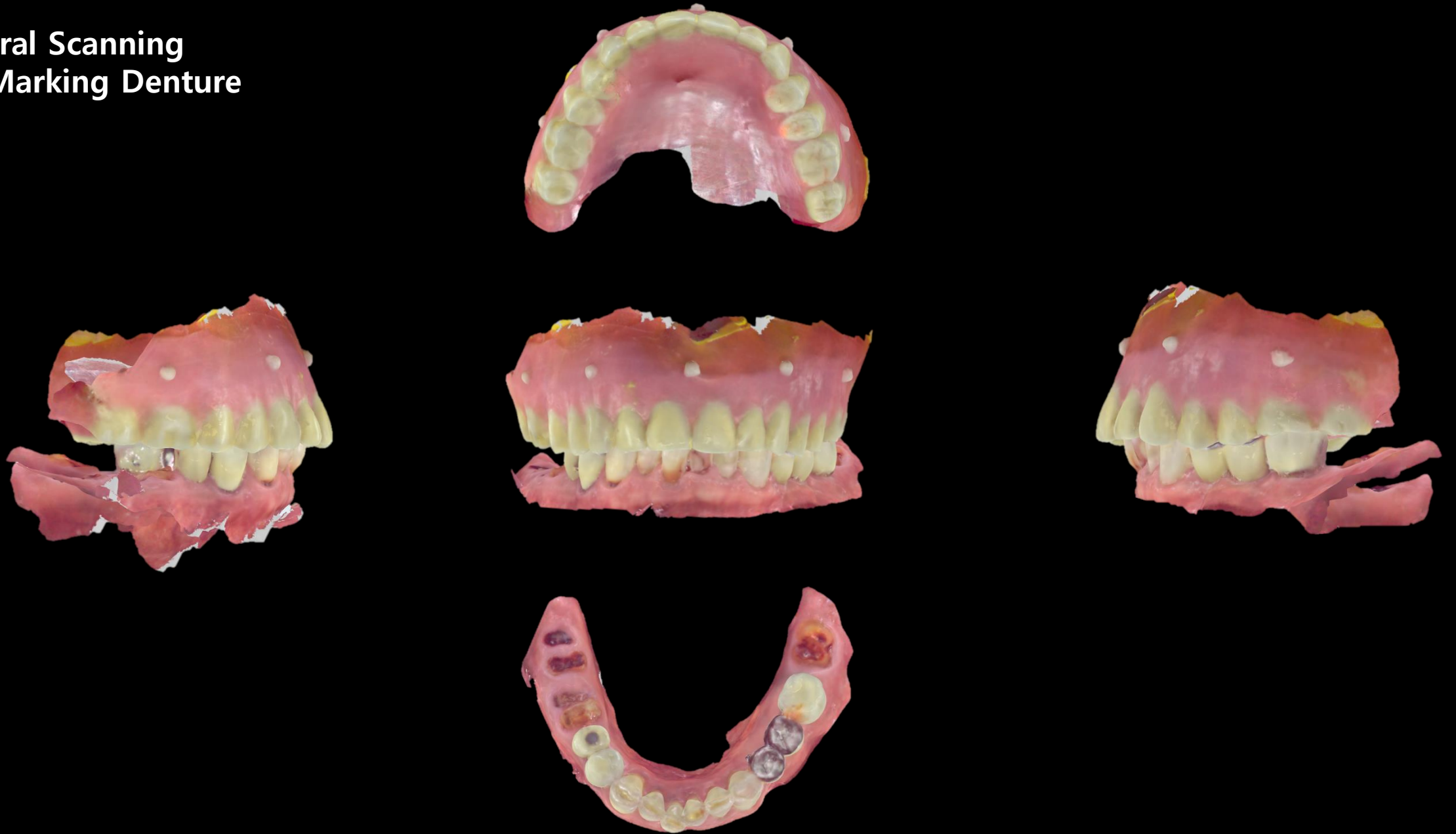


Marking on Denture  
using radiopaque resin



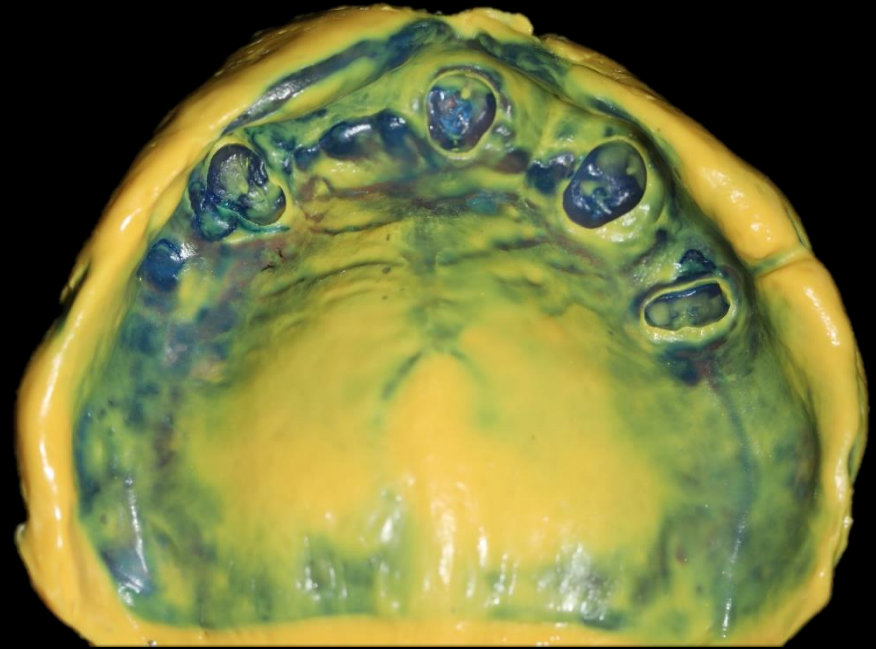


## Intraoral Scanning with Marking Denture



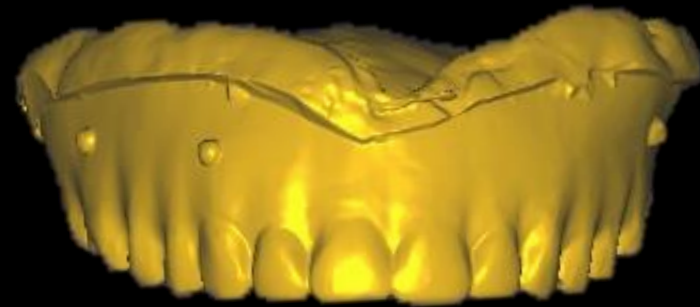
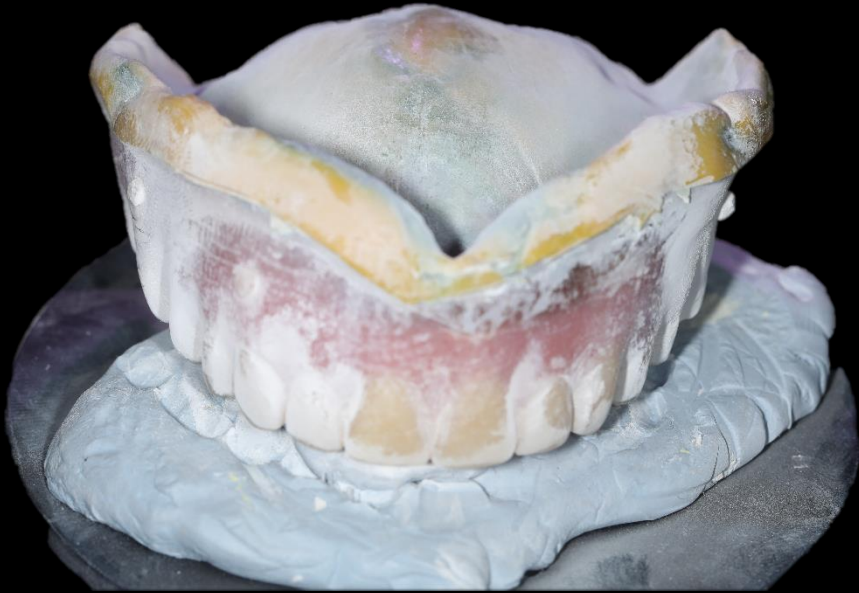


**Impression using Denture**  
(Bright Impress Light)



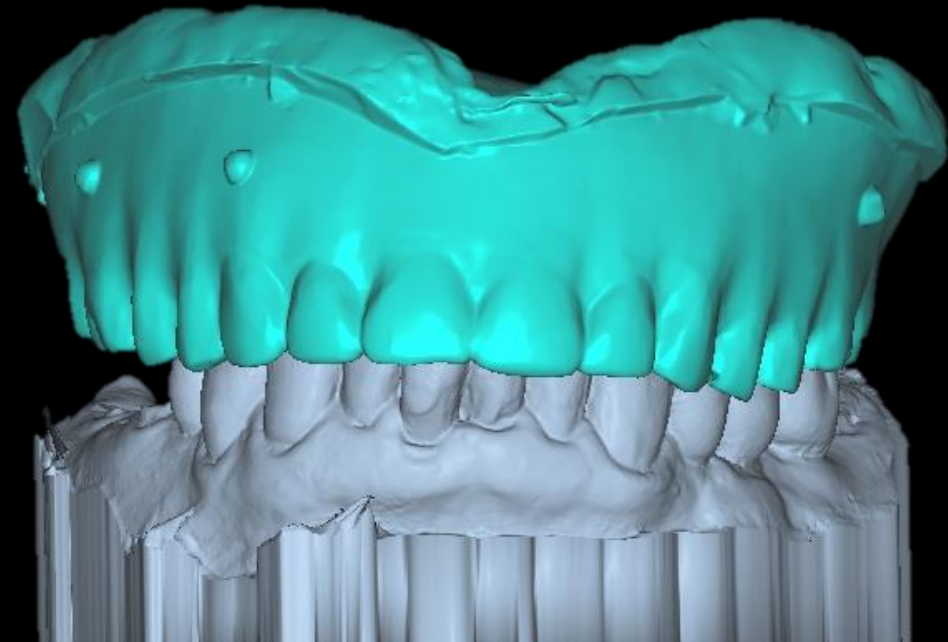
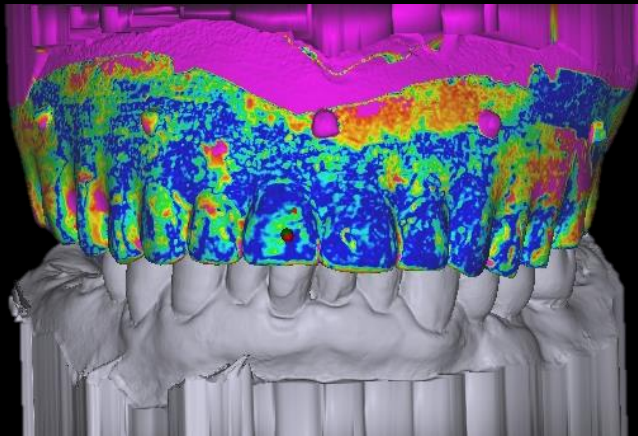
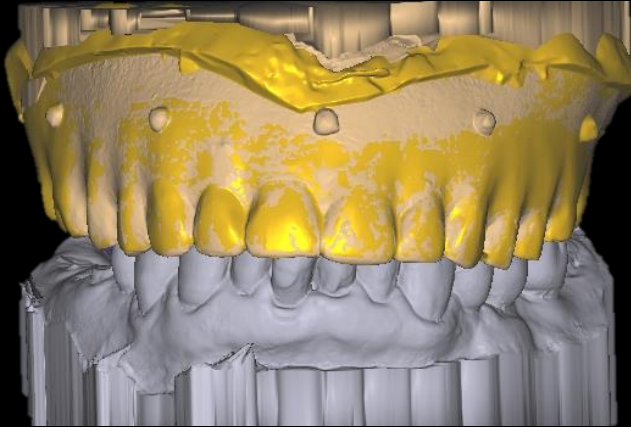


## Scanning of the Denture



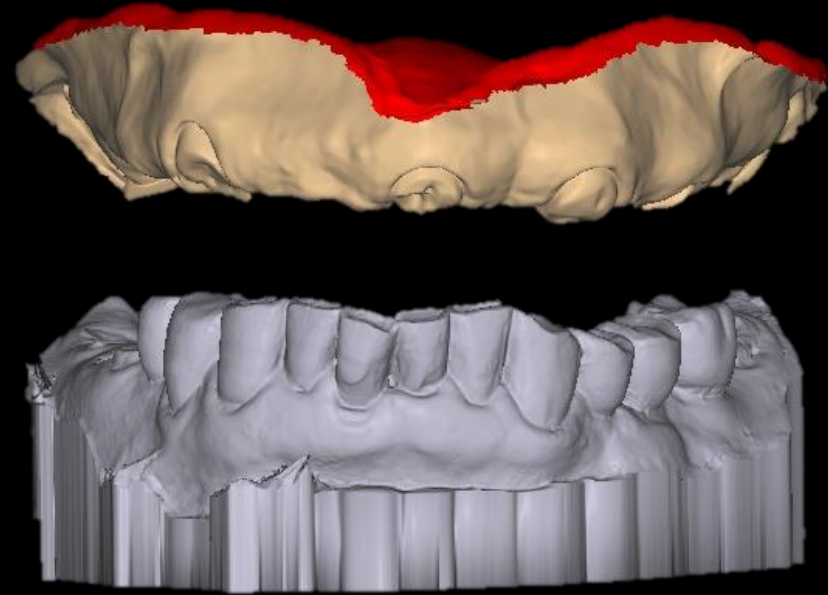
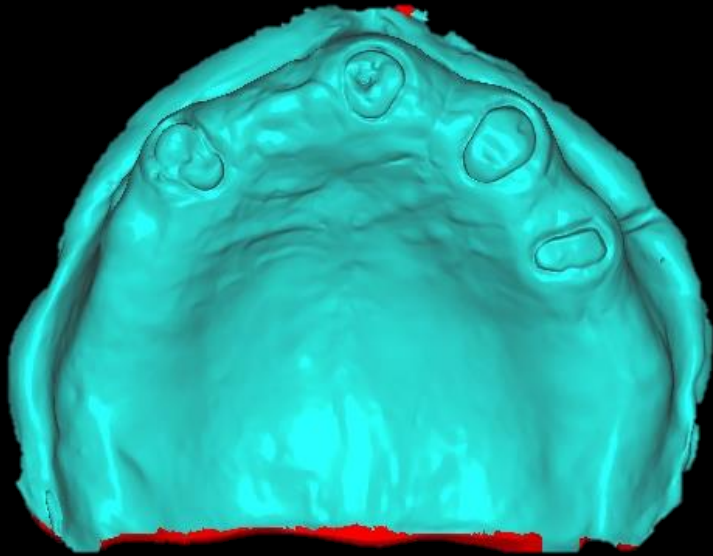


## Merging (Intraoral Scan, Model Scan)



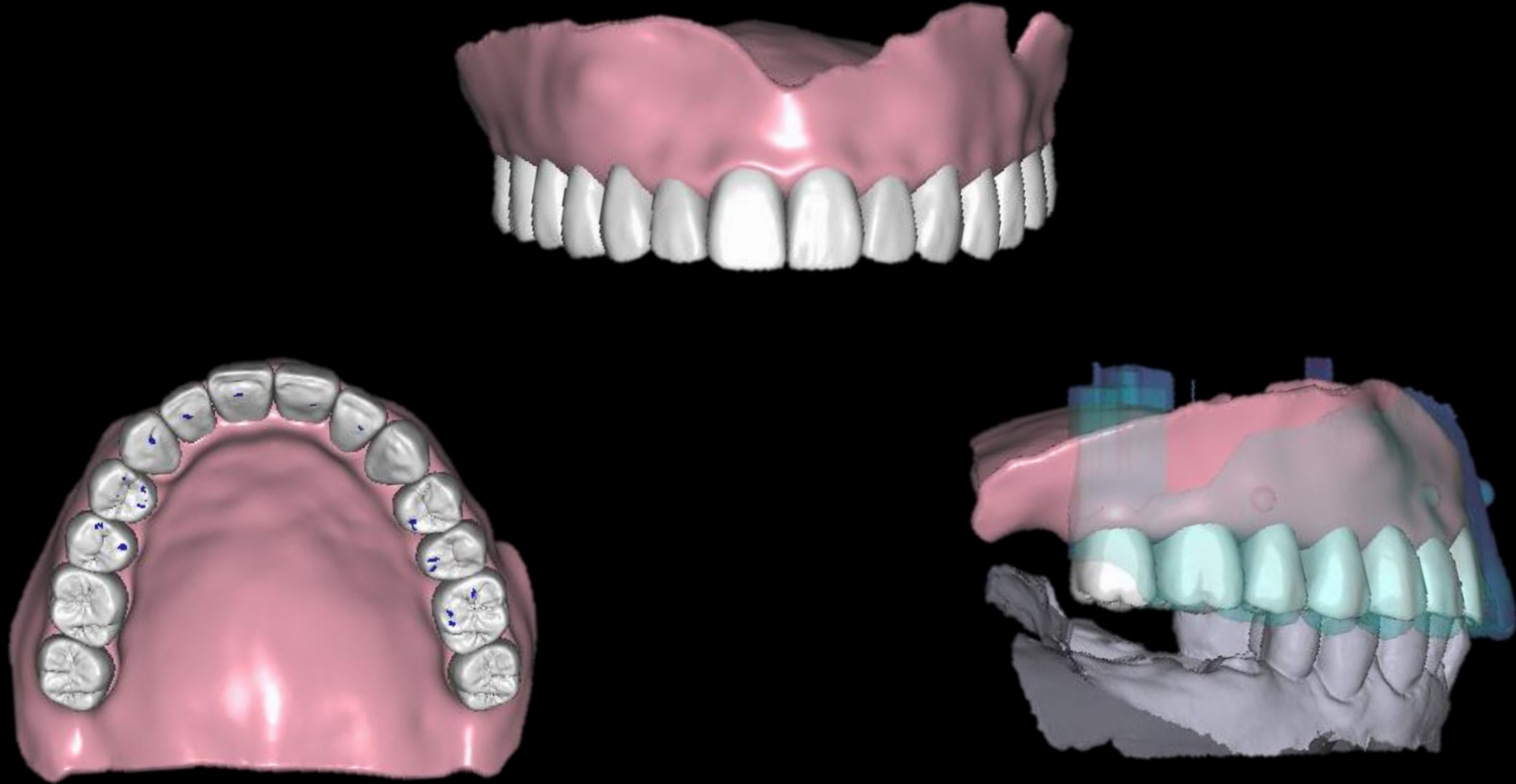


Inverting image of Denture base





## Temporary Denture Design





## Temporary Denture (Printing)



Pink Resin adding

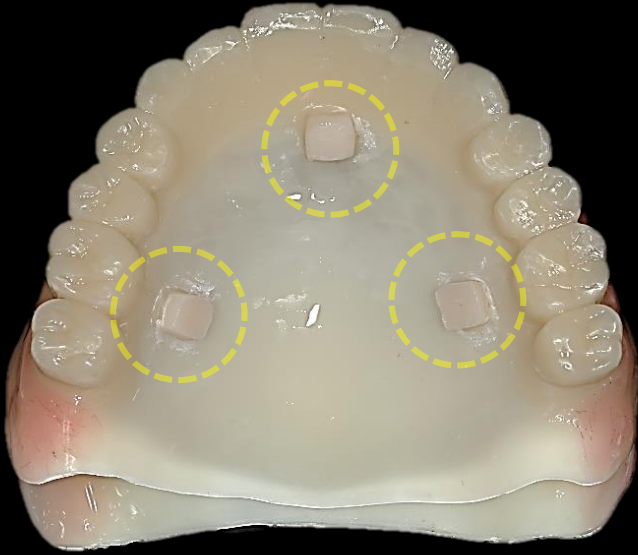


**Temporary Denture delivery (2021-04-22)**





## Temporary Denture (Printing)



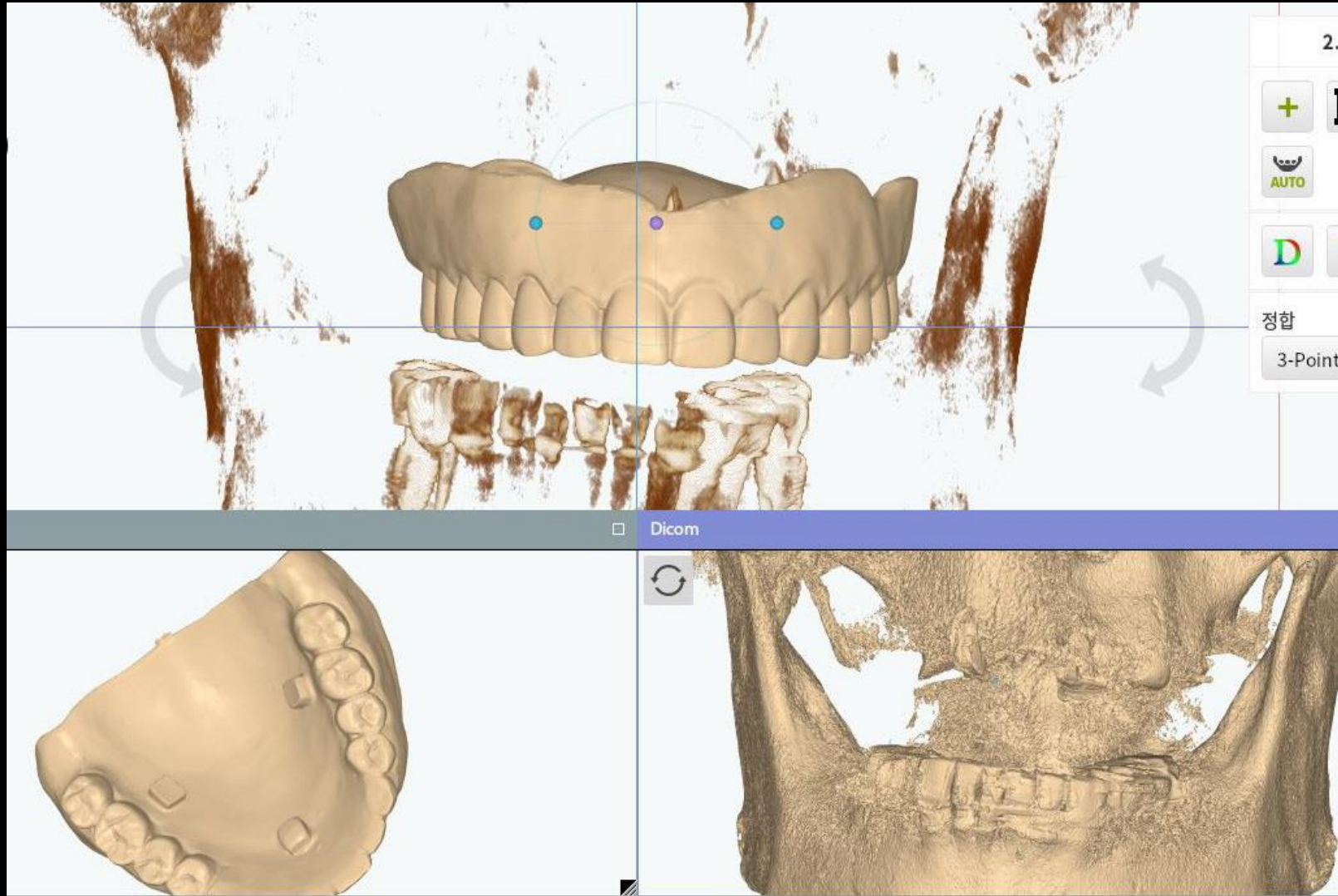
Marking on Denture  
using radiopaque resin



Model Scanning

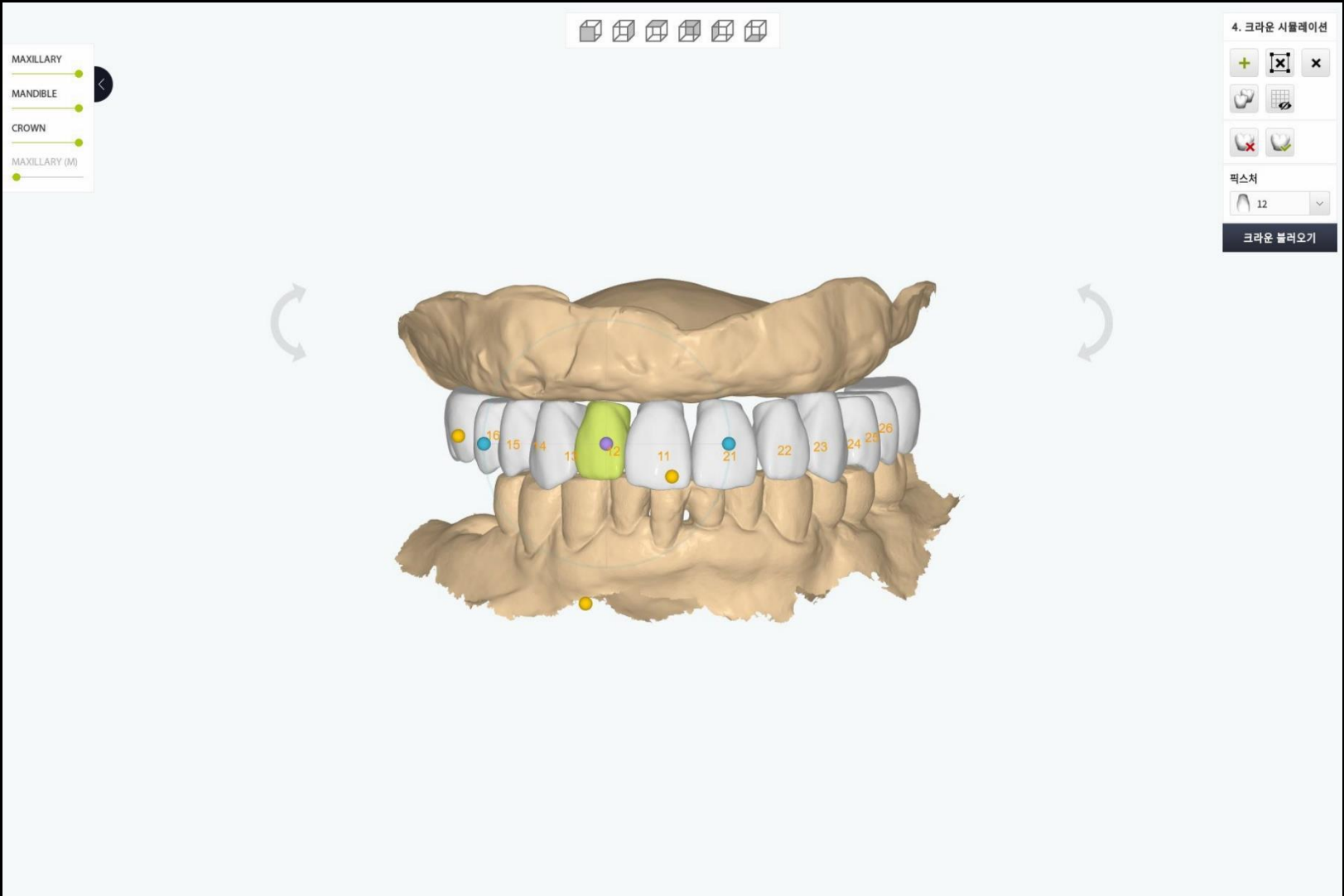


## Digital Guide S/W (Merging CT image & Model Scan)



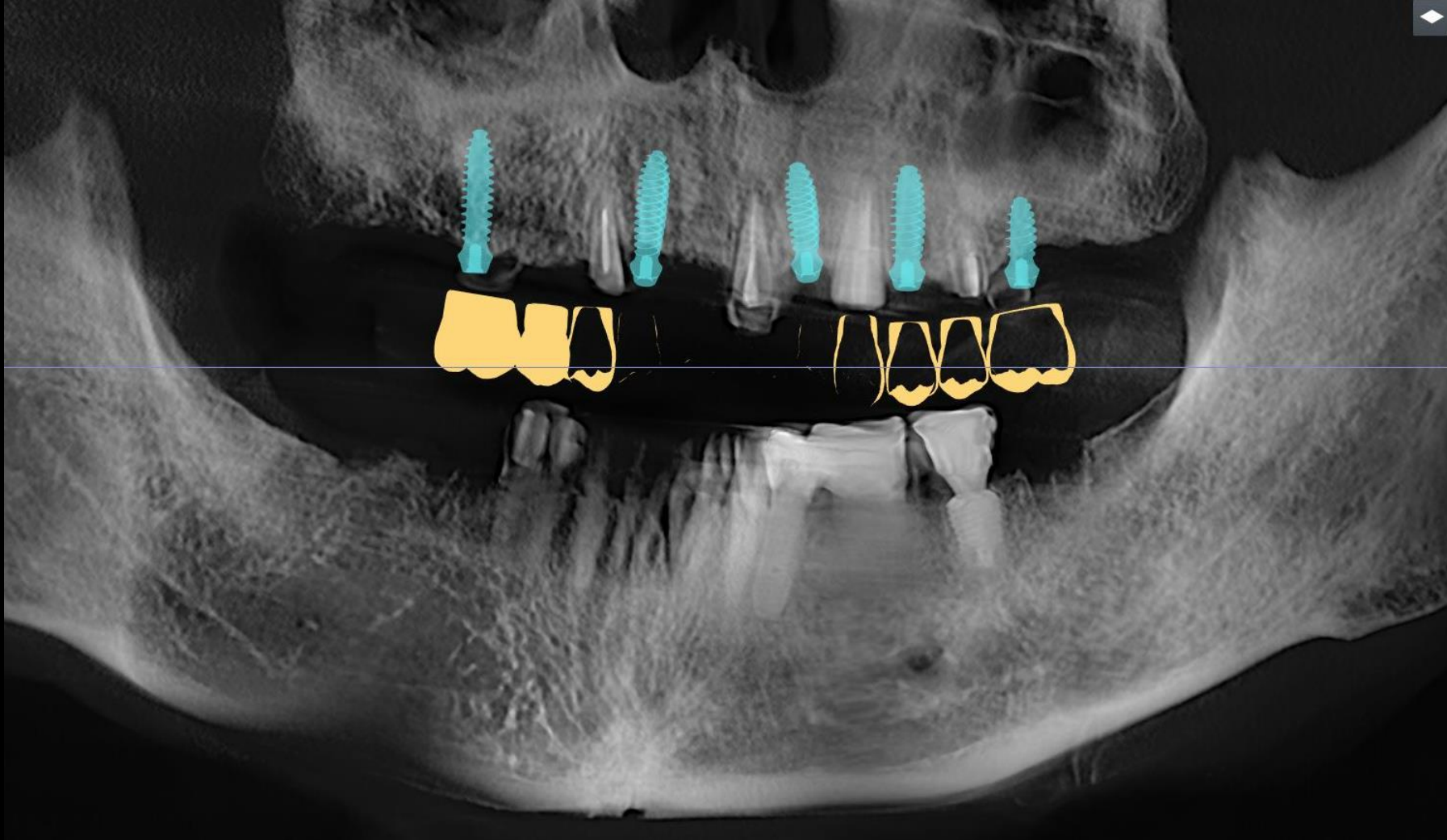


# Digital Guide S/W (Anatomy Design)



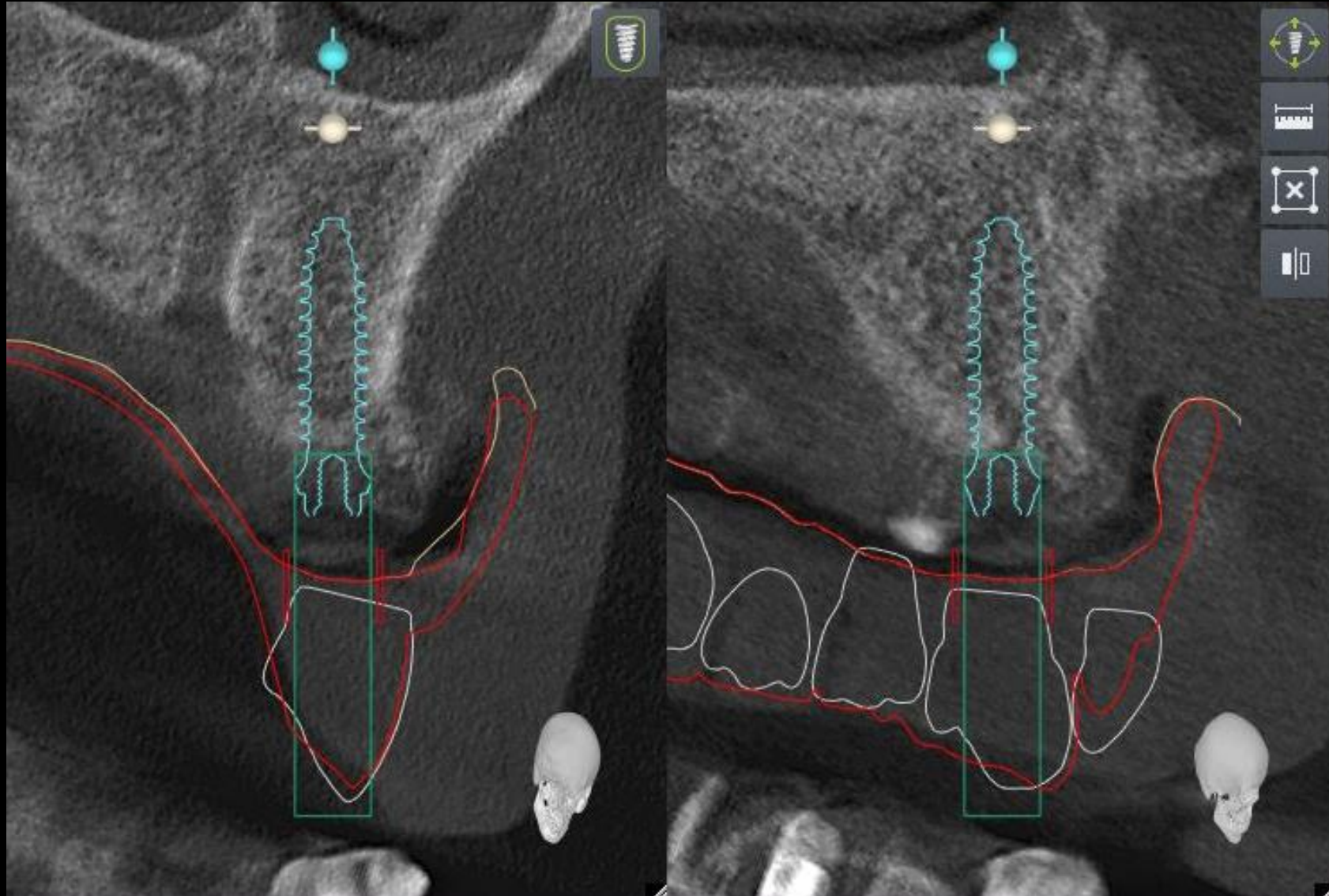


## Digital Guide S/W (Implant Planning)



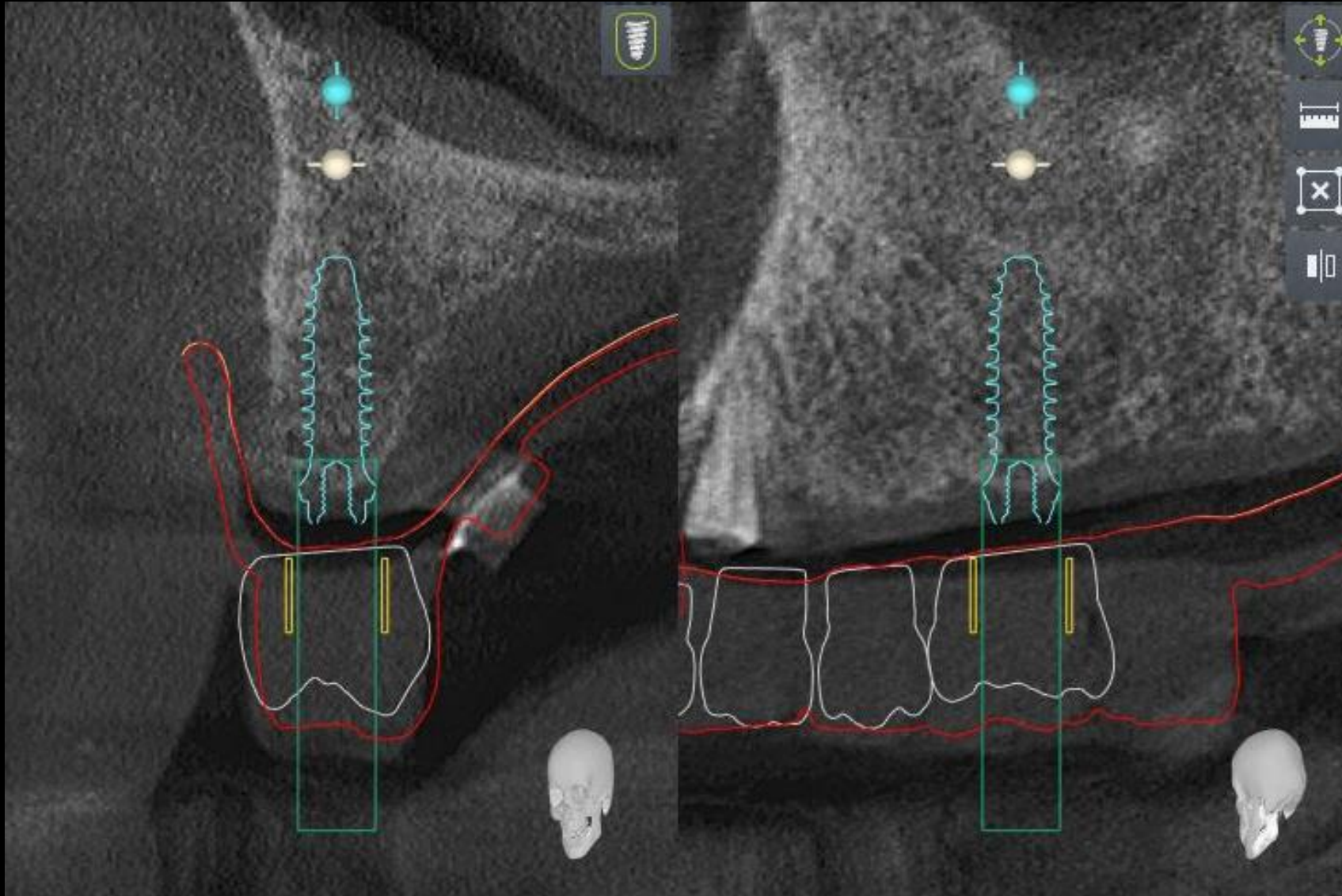


## #13 Implant planning / (Tissue Level Ø4.0 \* 9mm)



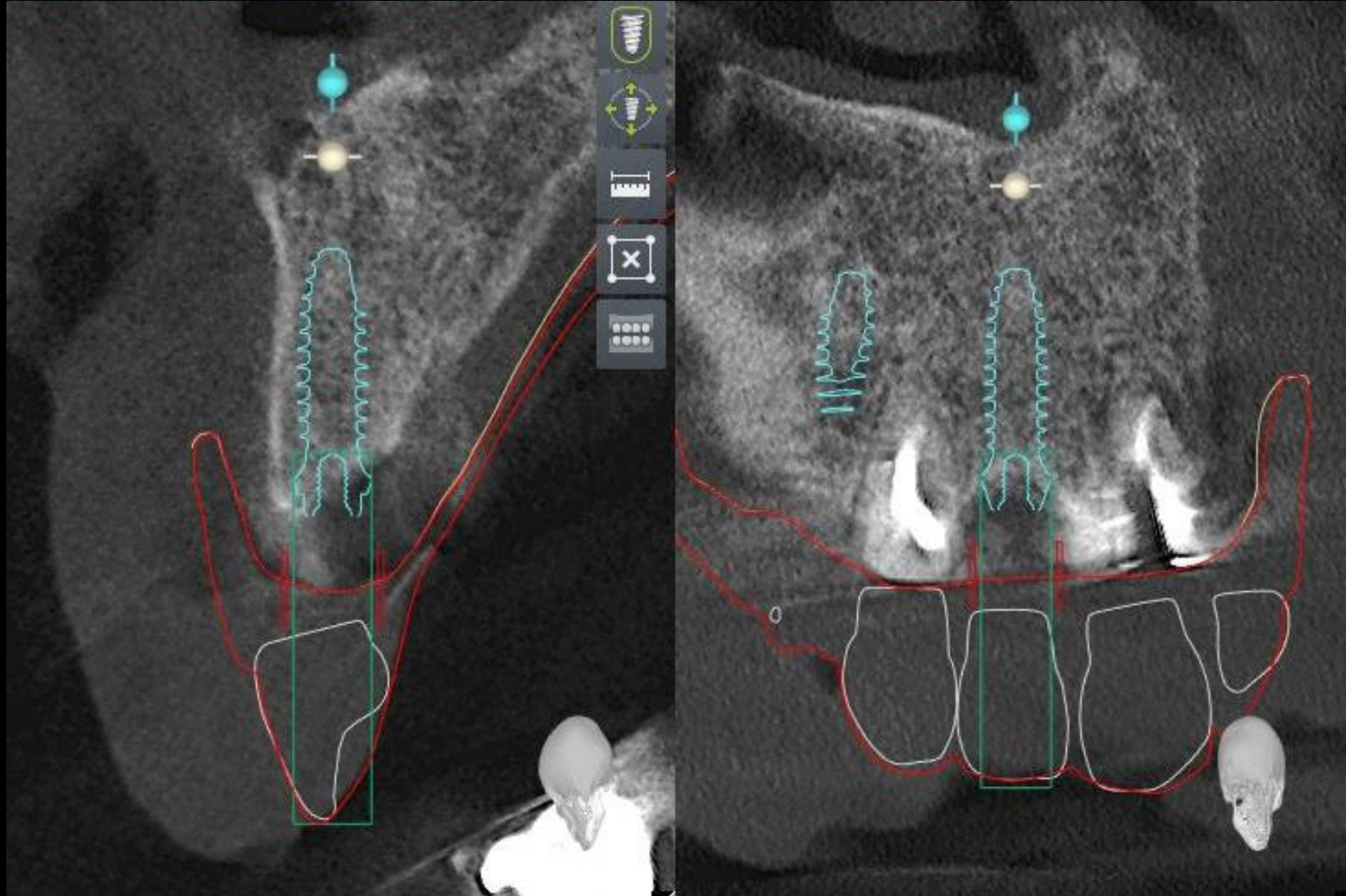


## #16 Implant planning / (Tissue Level Ø3.5 \* 9mm)



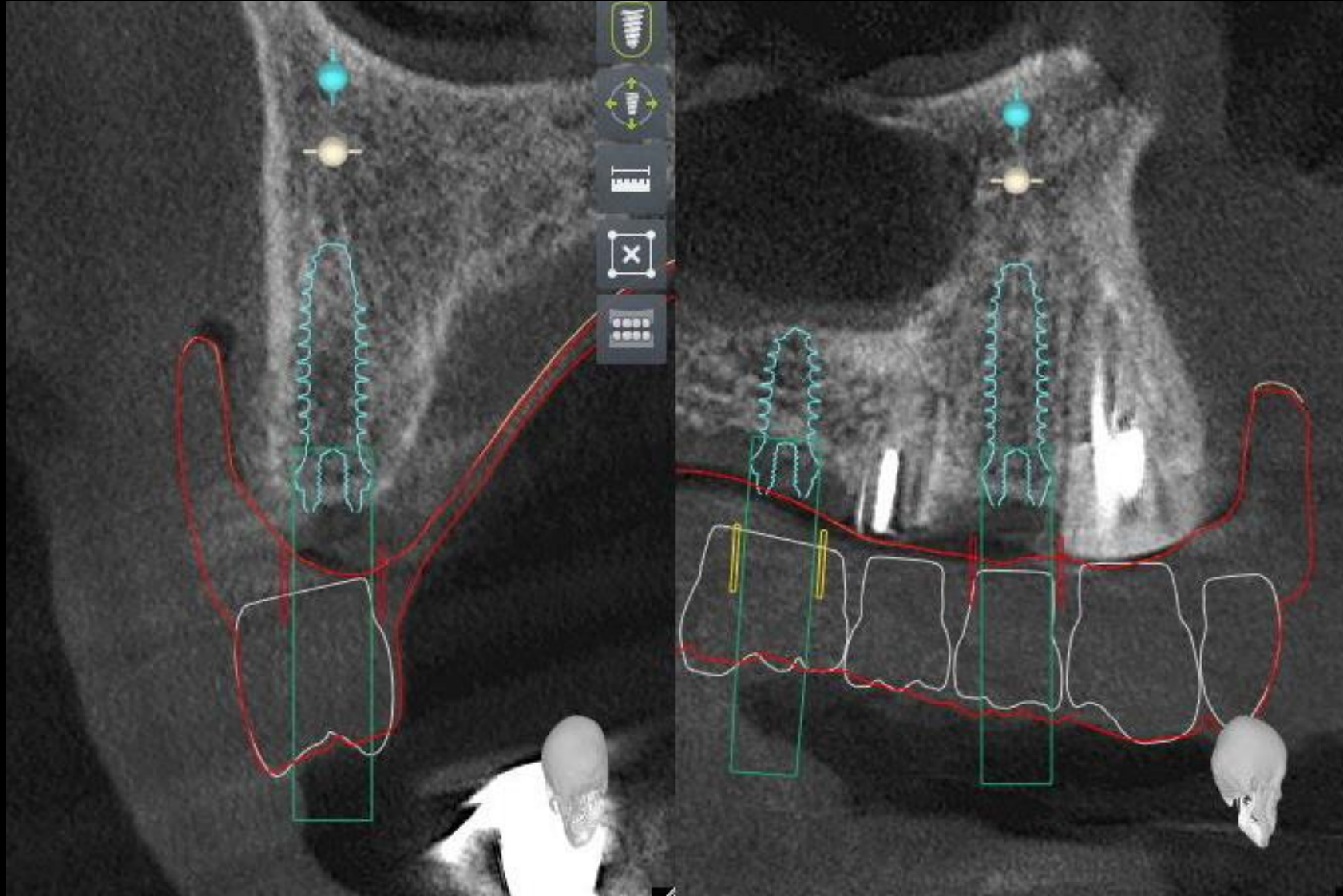


## #22 Implant planning / (Tissue Level Ø3.5 \* 9mm)



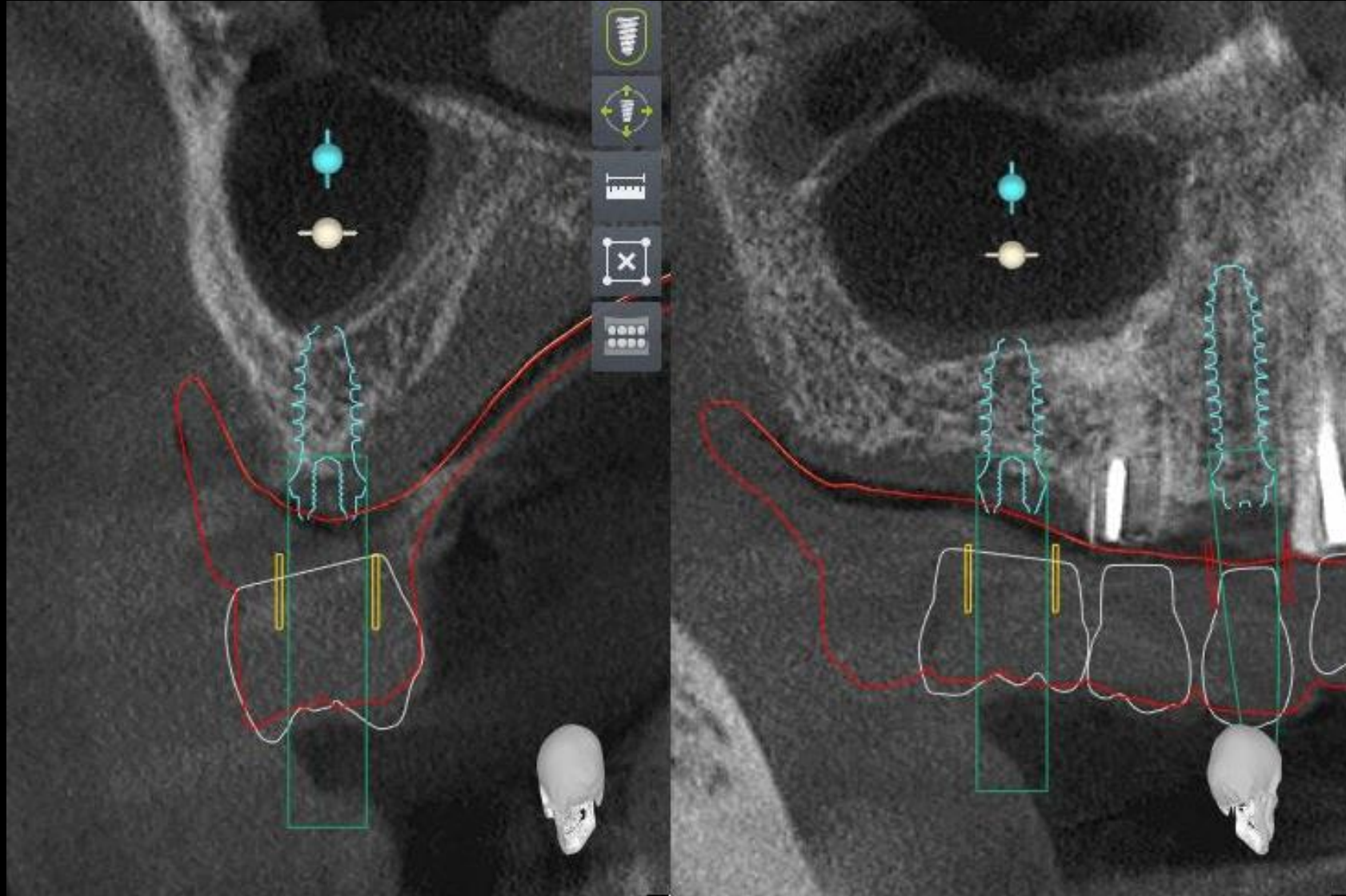


## #24 Implant planning / (Tissue Level Ø4.0 \* 9mm)





## #26 Implant planning / (Tissue Level Ø3.5 \* 7mm)



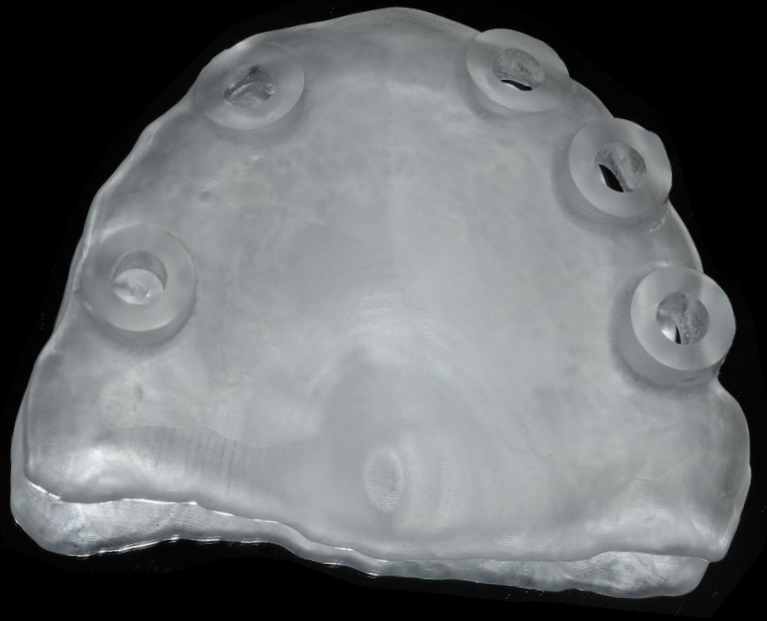


## Digital Guide S/W (Guide Design)



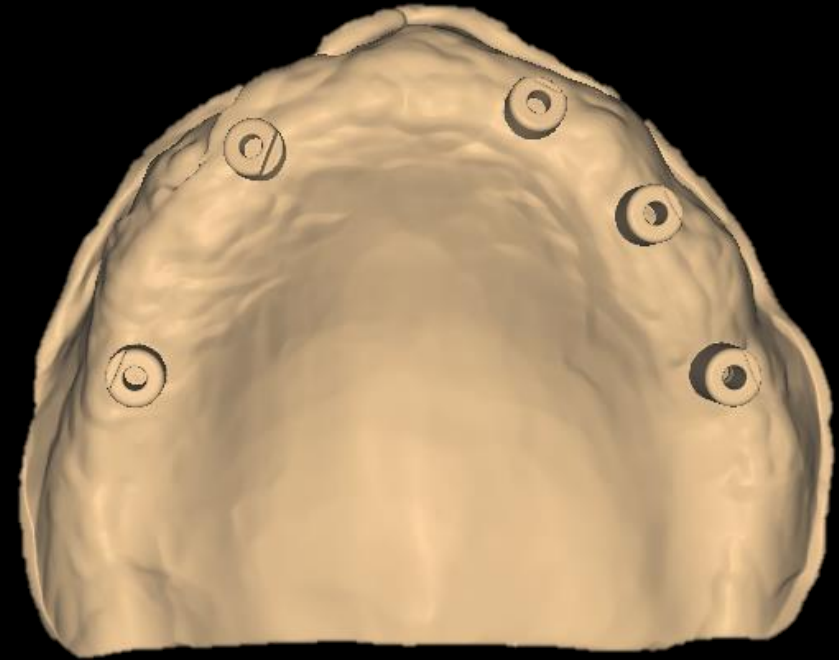
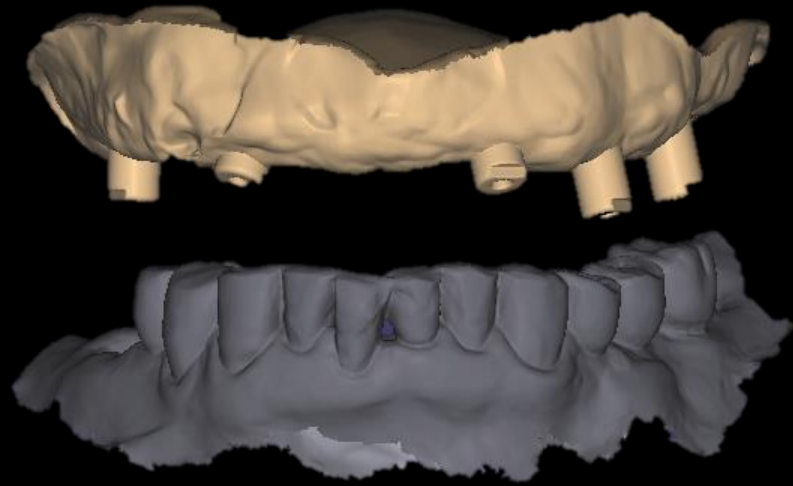


## Milling Stent



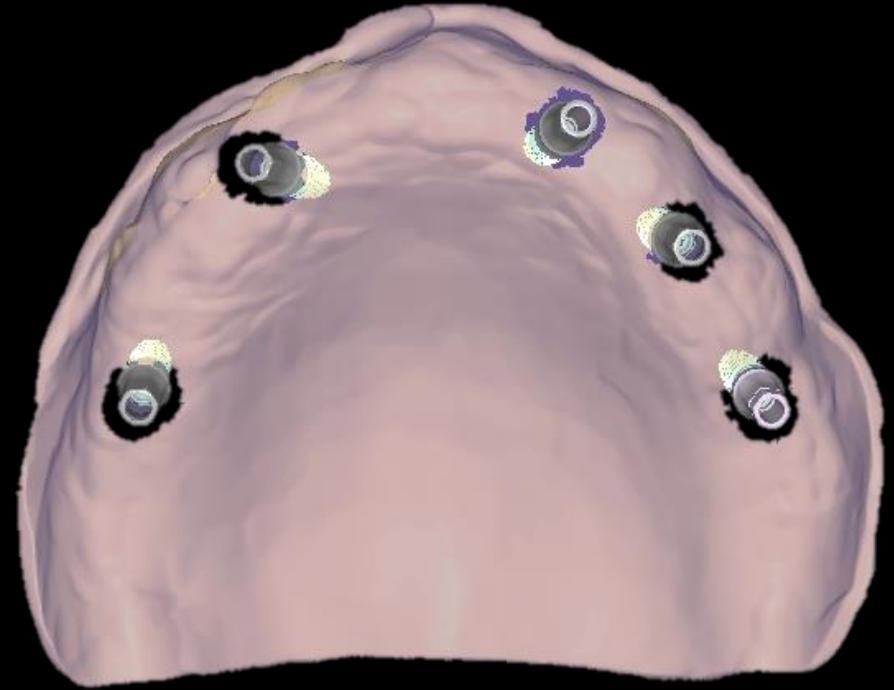
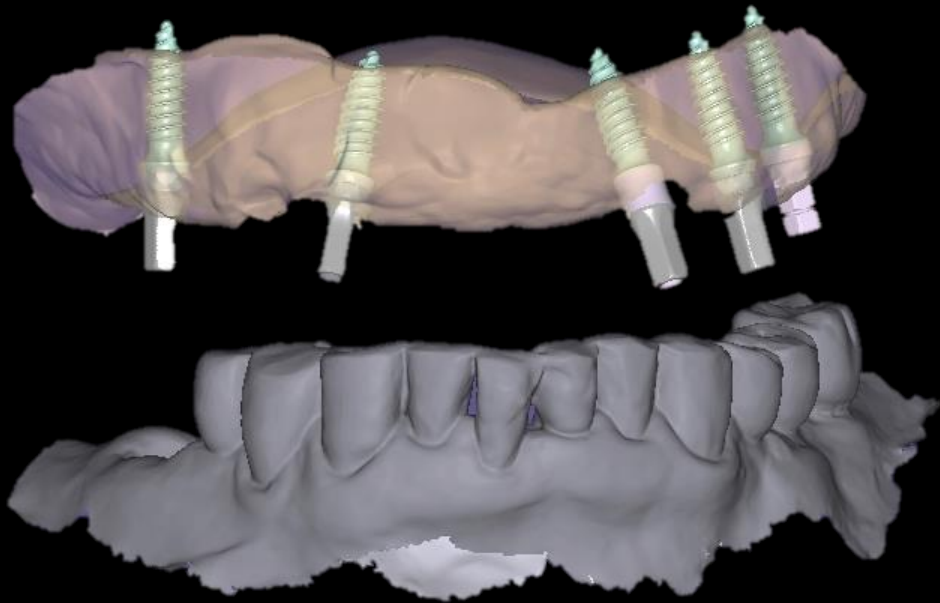


**Virtual Setup Model  
(Scan Comfort Cap)**



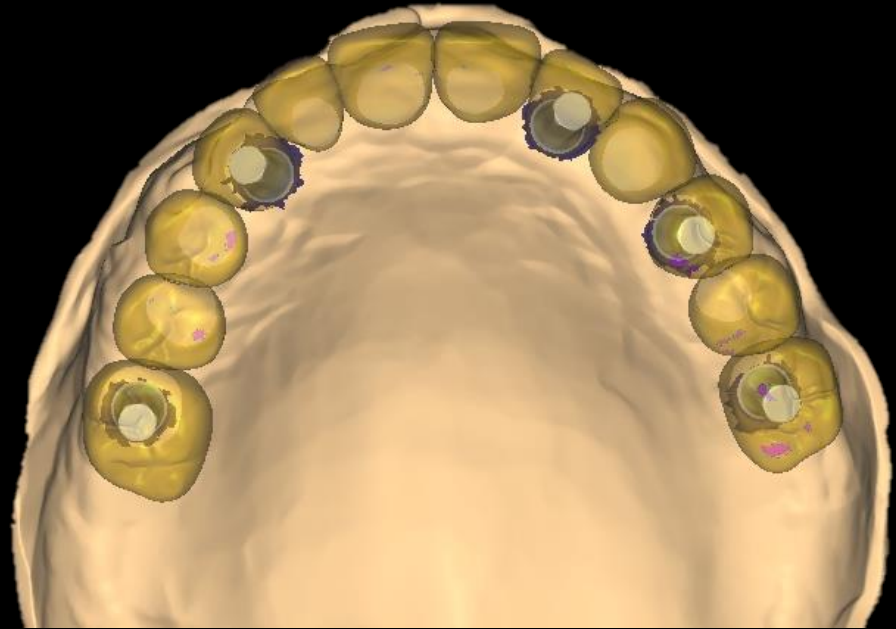
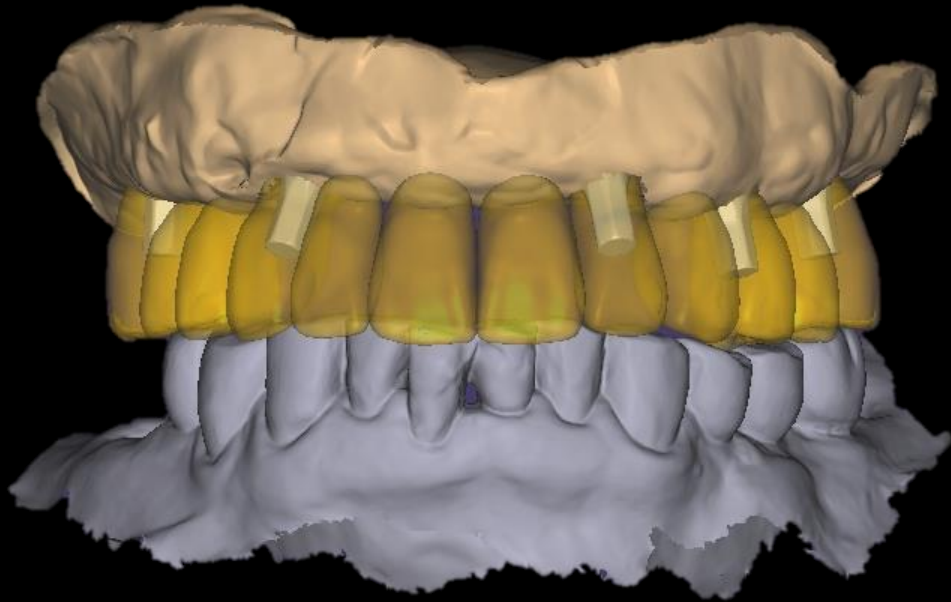


**Virtual Setup Model  
(Screw Metal Link)**





**Virtual Setup Model  
with Provisional Crown**





## Similar case

## Digital System using Resin marking Denture



Pre-op



## Similar case

## Digital System using Resin marking Denture



Resin marking on Denture

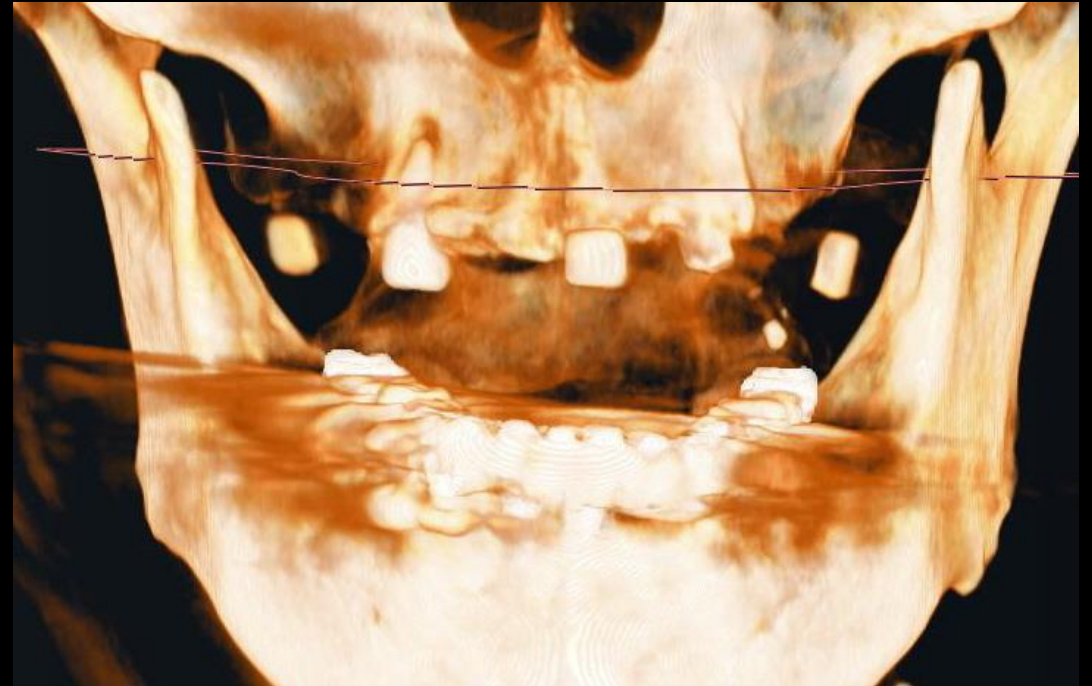


## Similar case

## Digital System using Resin marking Denture



Intraoral Scanning

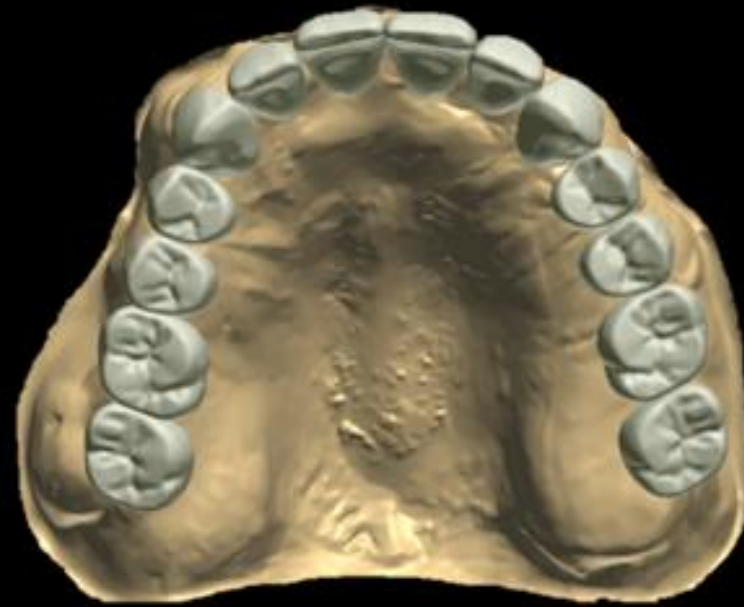


CT taking



## Similar case

## Digital System using Resin marking Denture

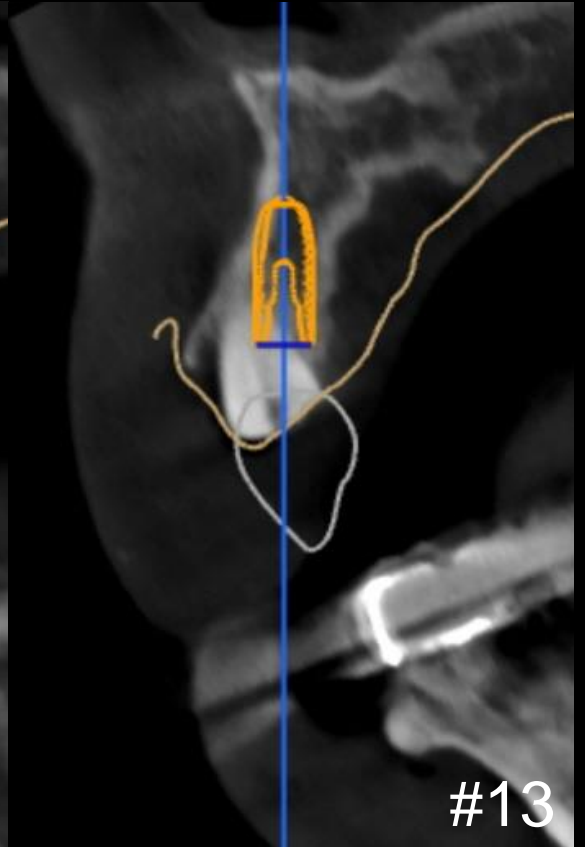
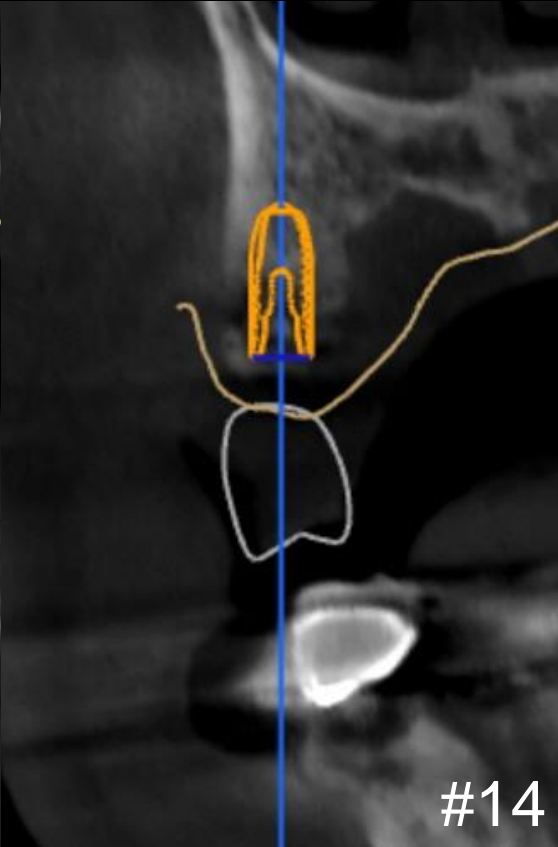
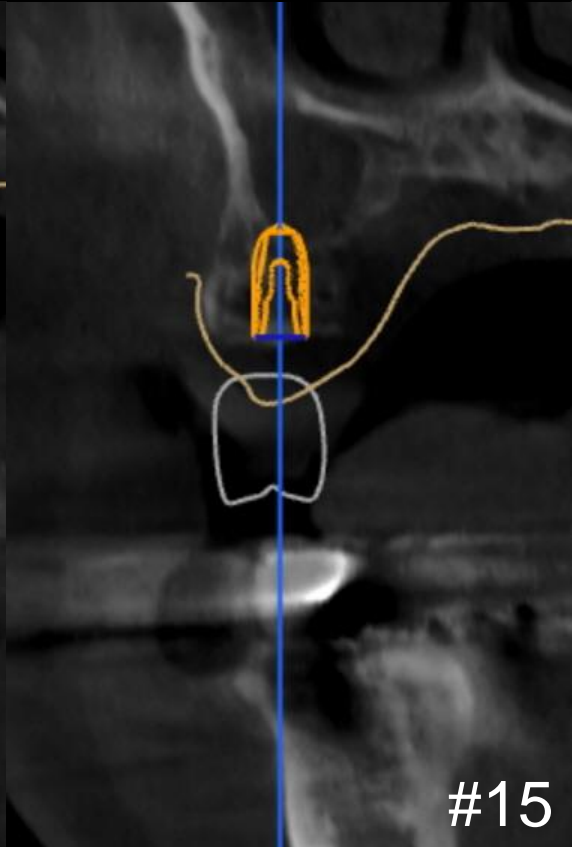
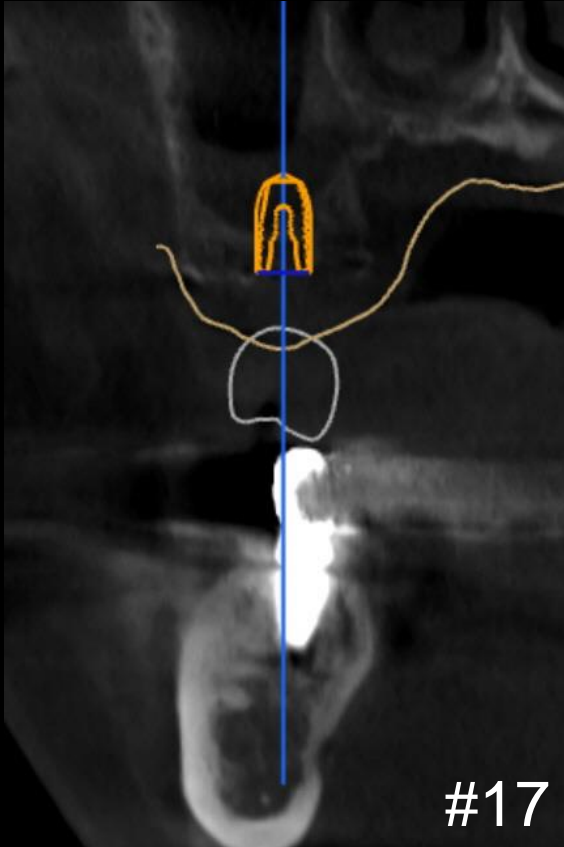


Digital Guide (Set-up)



## Similar case

## Digital System using Resin marking Denture

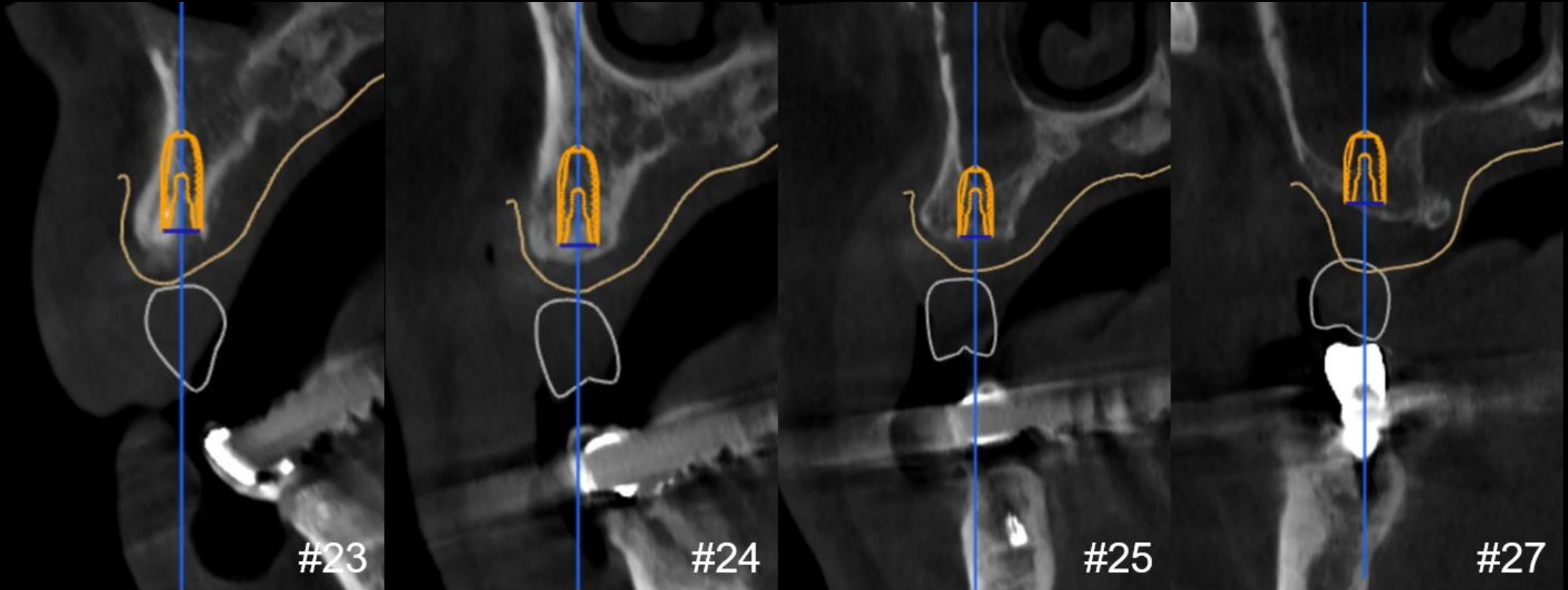


#10 Implant Planning



## Similar case

## Digital System using Resin marking Denture

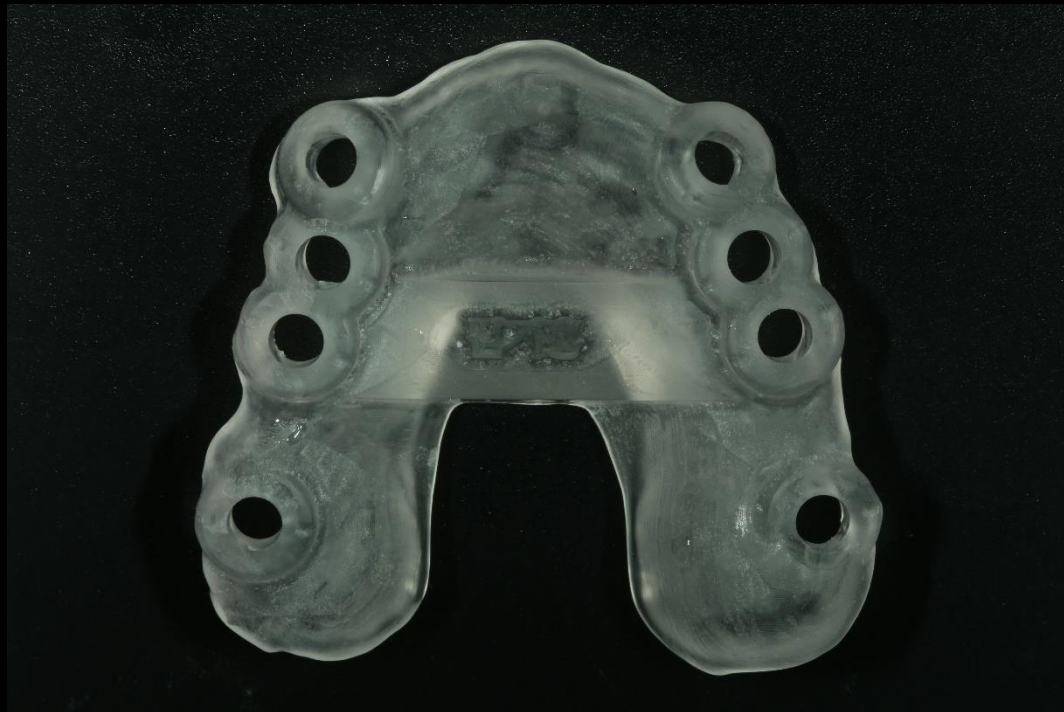


#20 Implant Planning



## Similar case

## Digital System using Resin marking Denture



Surgical Stent



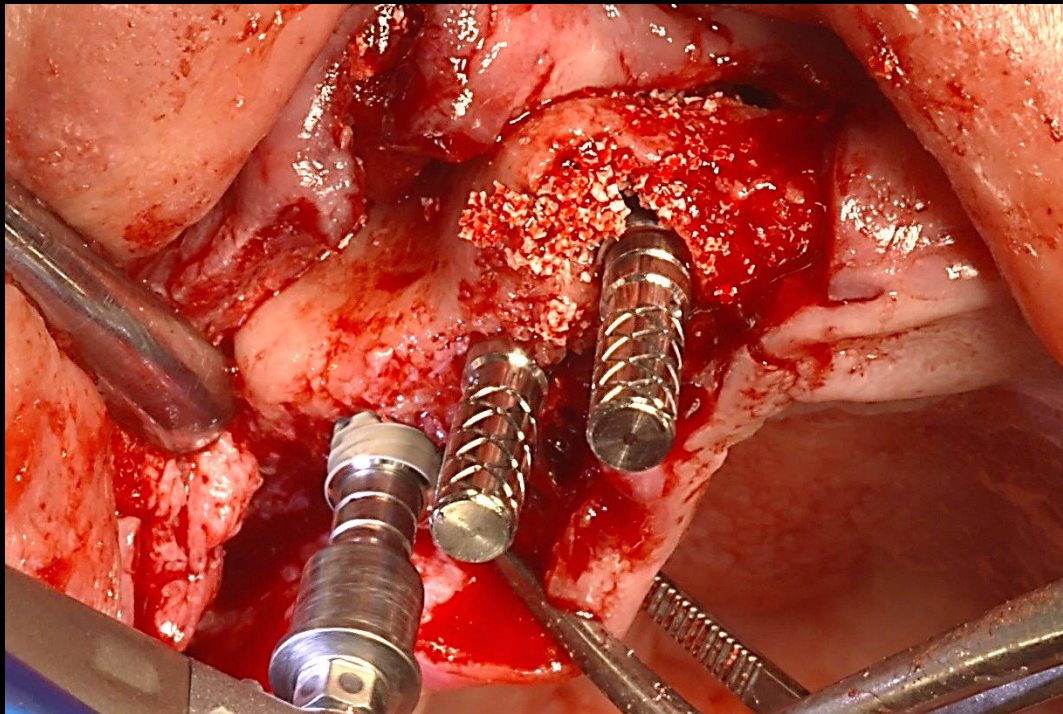
Stent adaptation



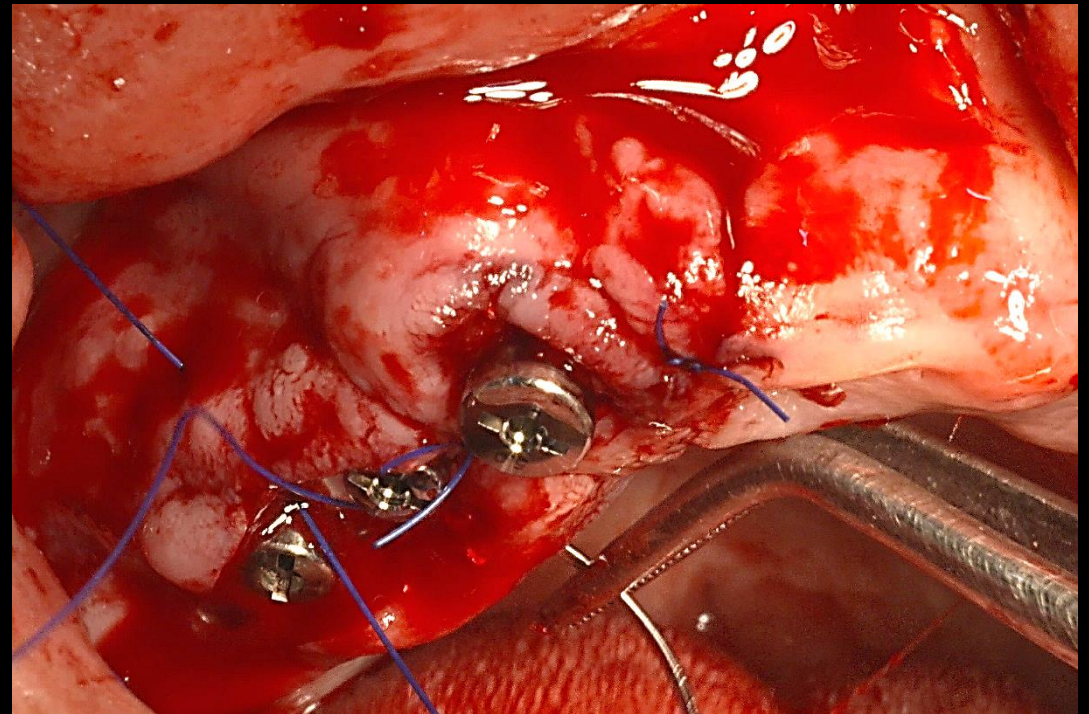
## Similar case

## Digital System using Resin marking Denture

#10



Fixture installation



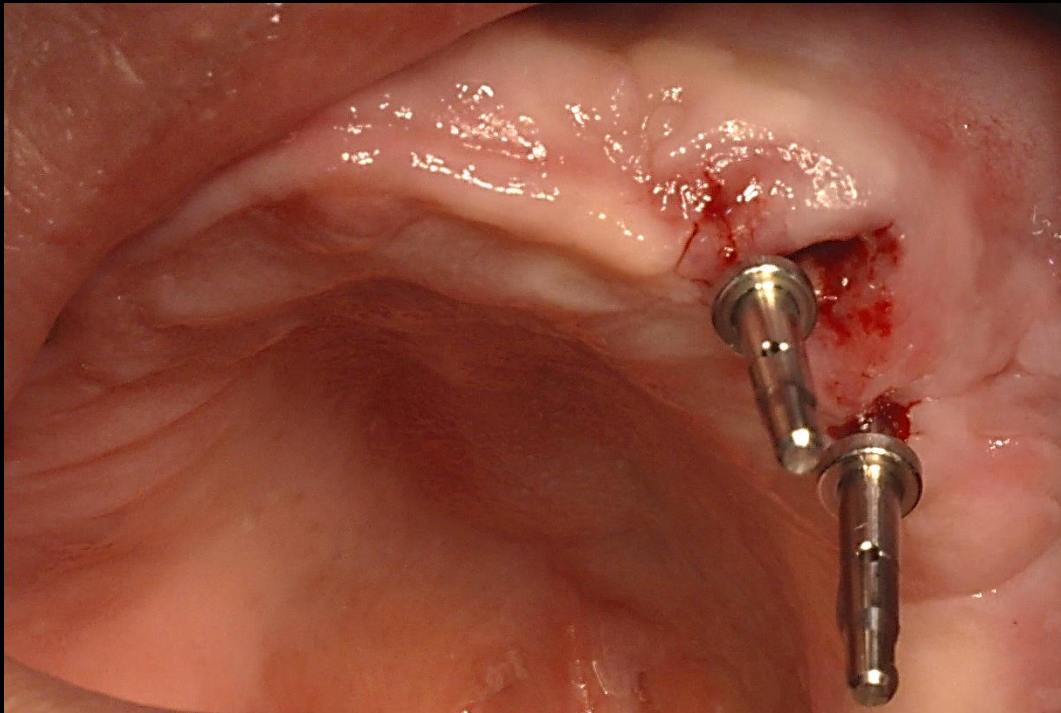
Suture



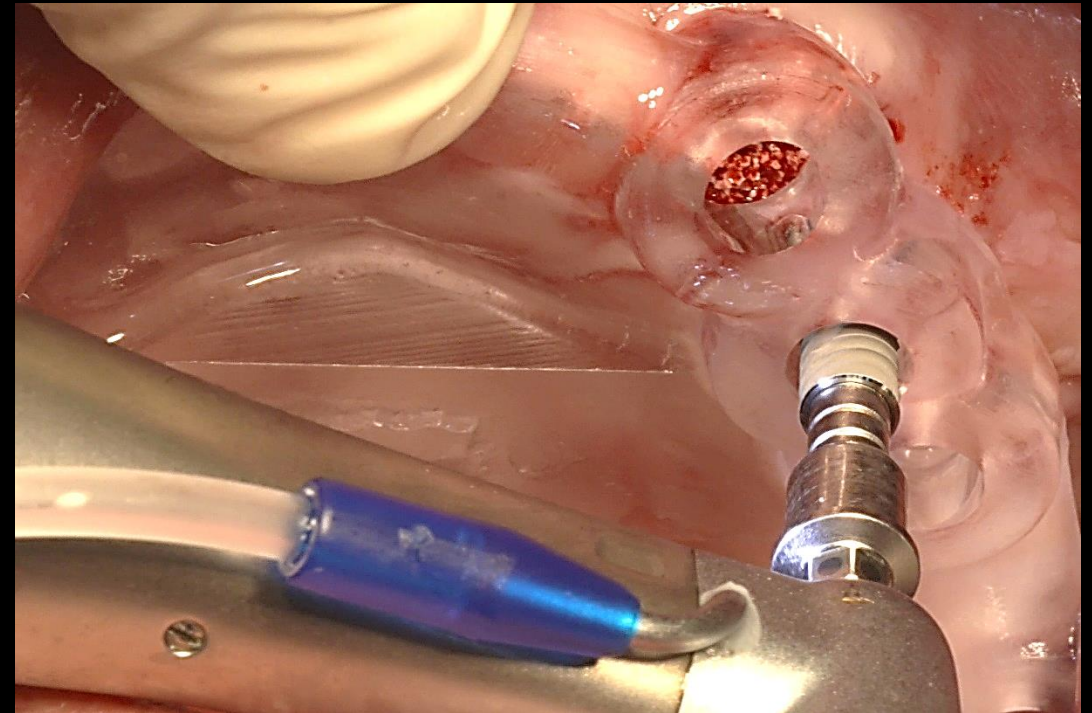
## Similar case

## Digital System using Resin marking Denture

#20



Drilling & Parallel Pin

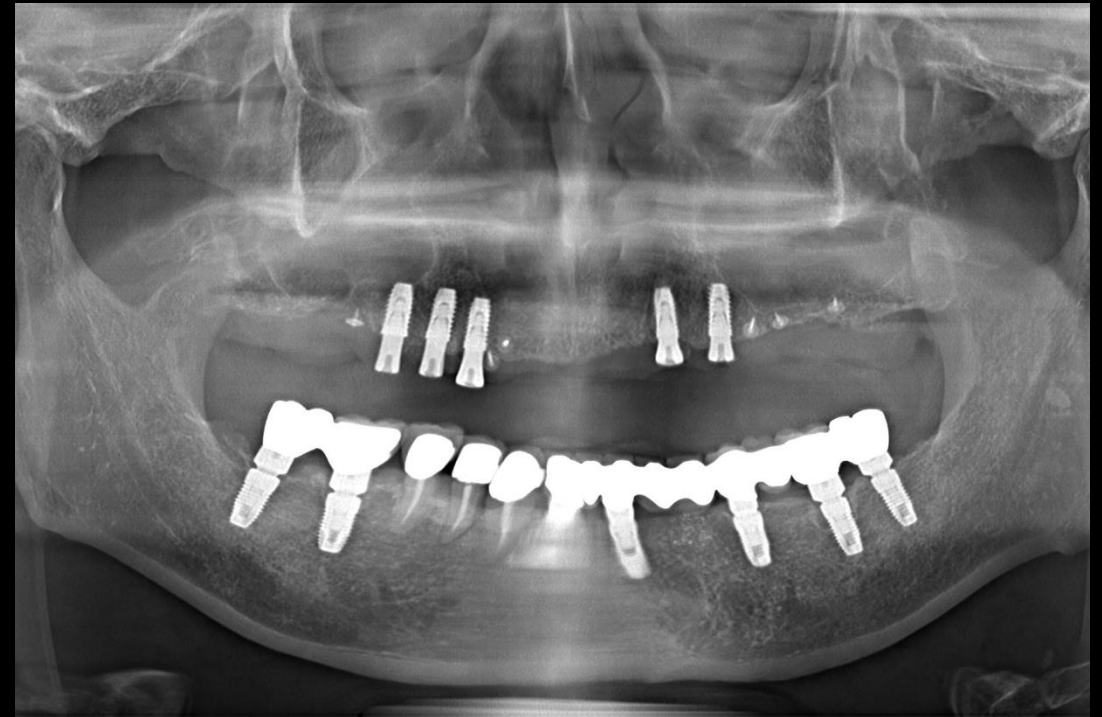
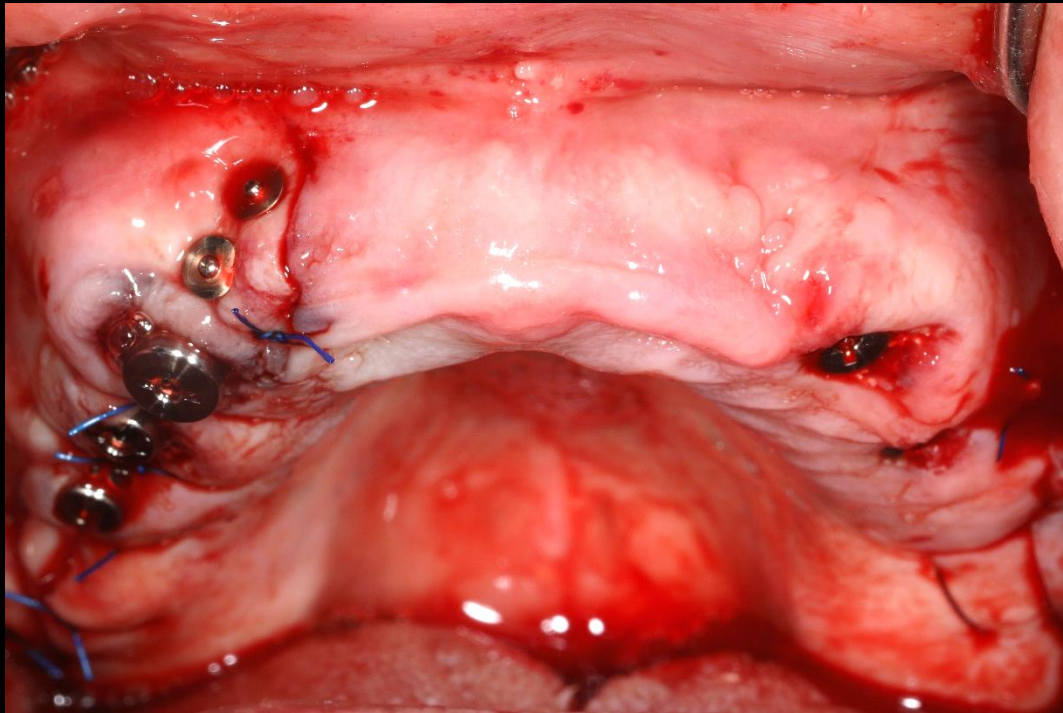


Fixture installation



## Similar case

## Digital System using Resin marking Denture

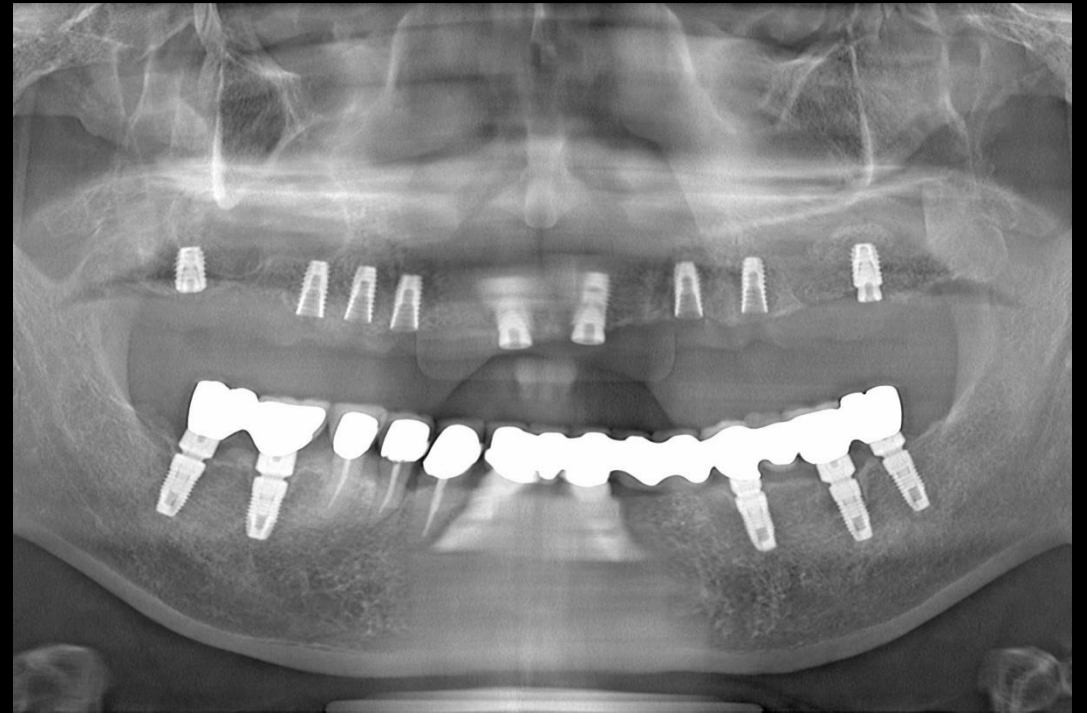
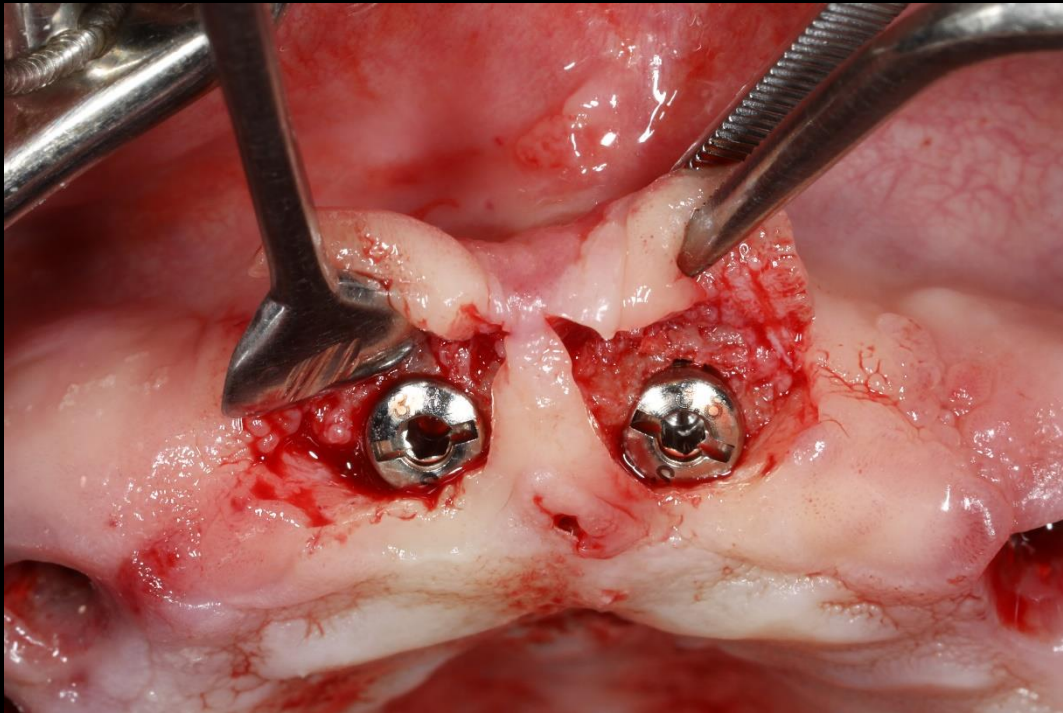


Post-op



## Similar case

## Digital System using Resin marking Denture



#11,21,17,27 Additional Implantation

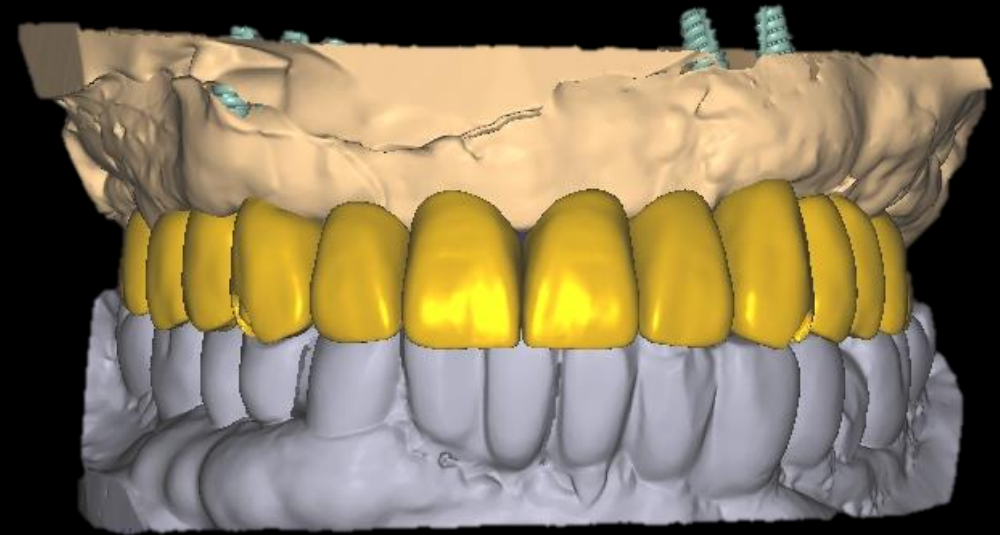


## Similar case

## Digital System using Resin marking Denture



Intraoral Scanning



CAD design



## Similar case

## Digital System using Resin marking Denture



Provisional restoration



## Similar case

## Digital System using Resin marking Denture



#10 Provisional restoration



#20 Provisional restoration