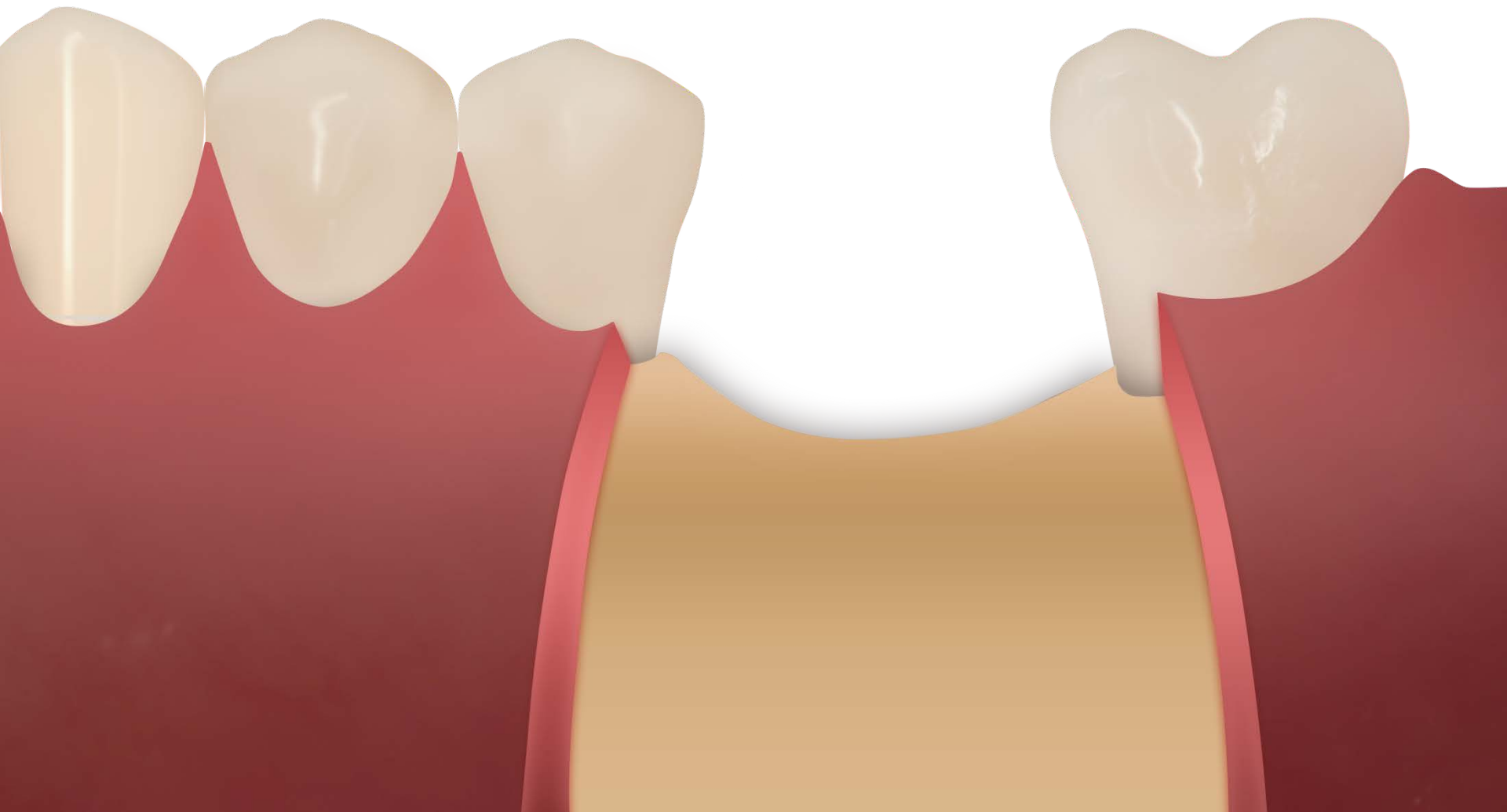


Dentium

RS Kit (Ridge Spreader)

Incision

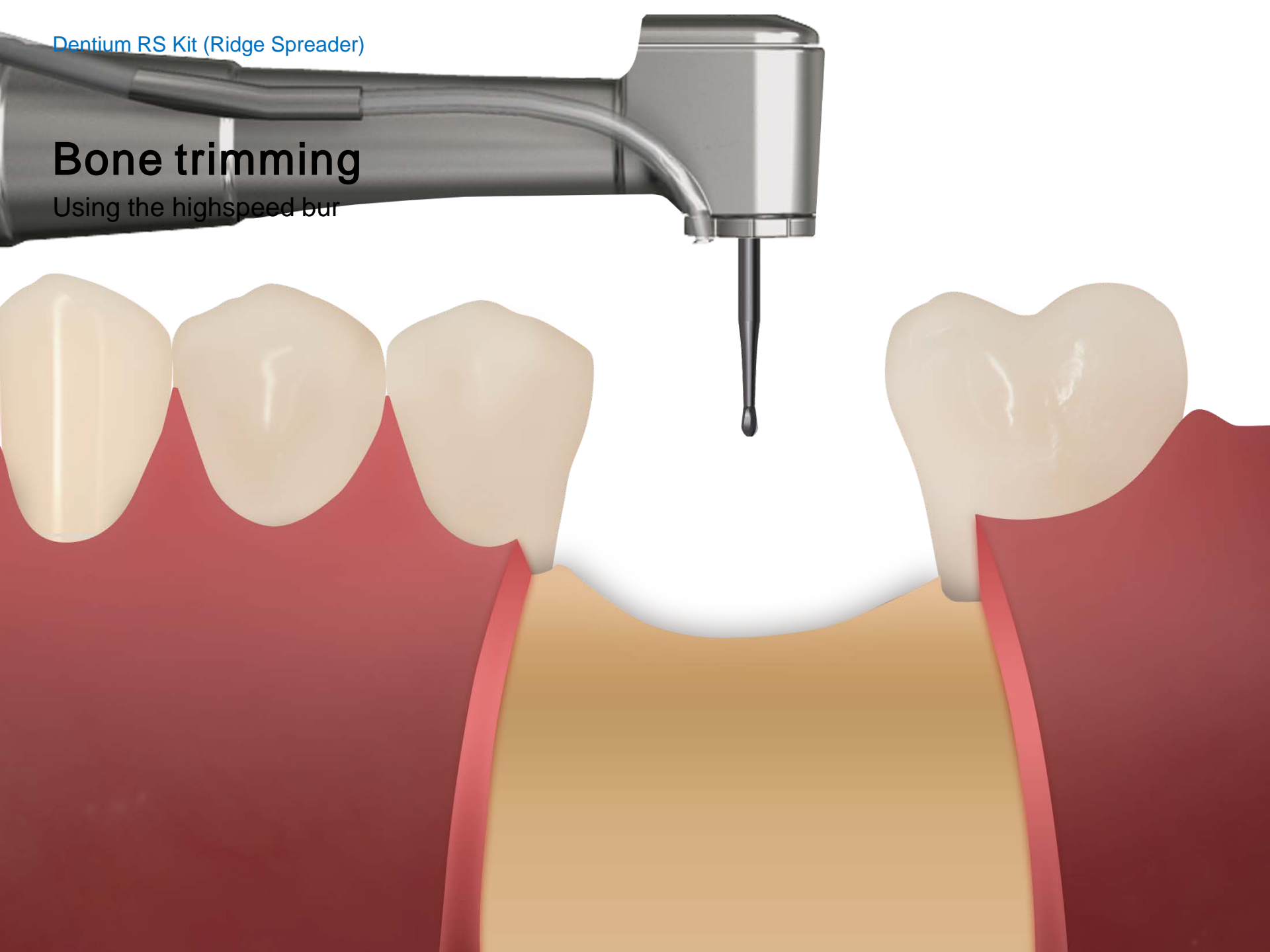
Narrow Ridge



Dentium RS Kit (Ridge Spreader)

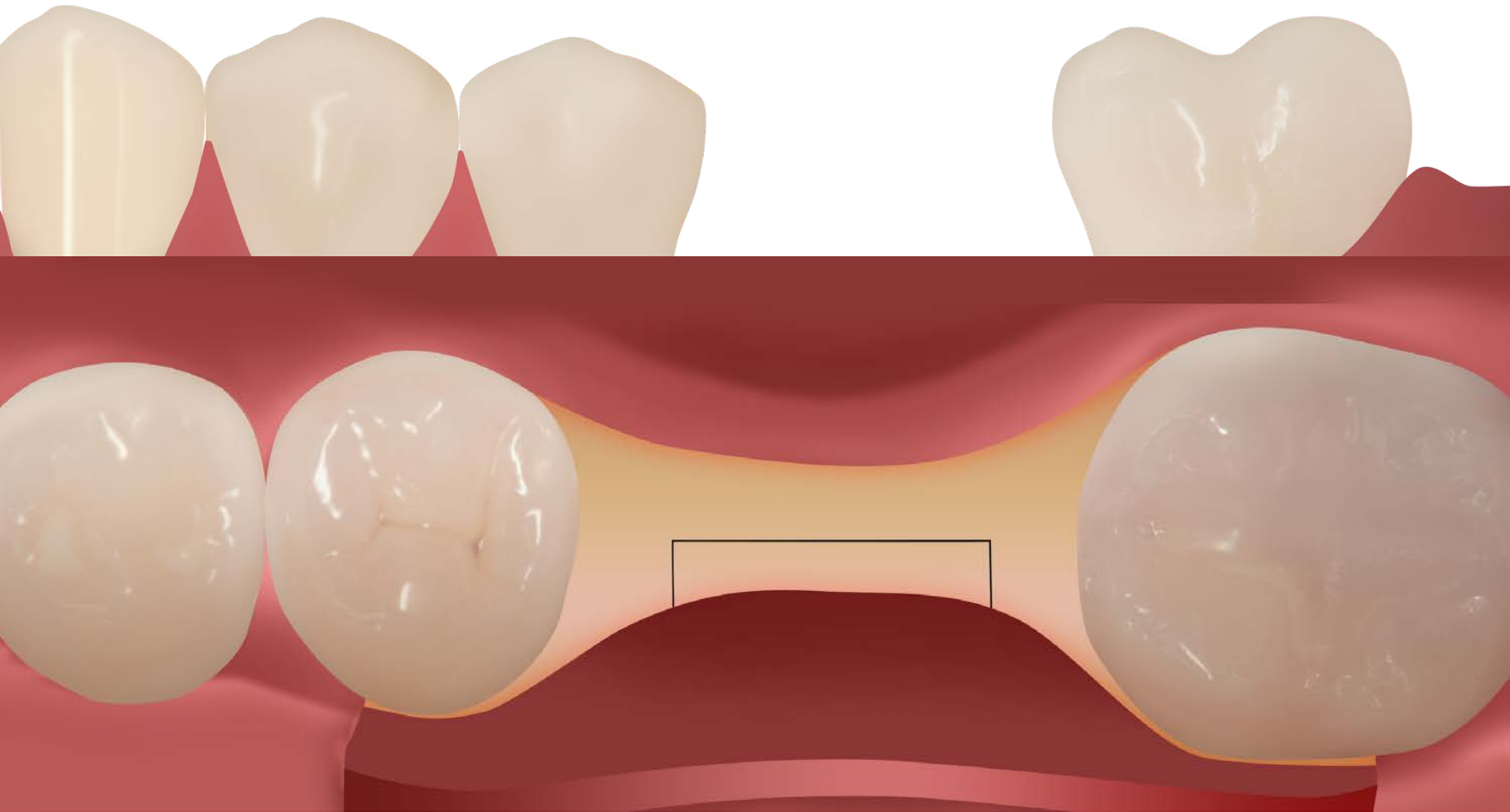
Bone trimming

Using the highspeed bur



Bone trimming

Narrow Ridge



Dentium RS Kit (Ridge Spreader)

Cutting with Saw

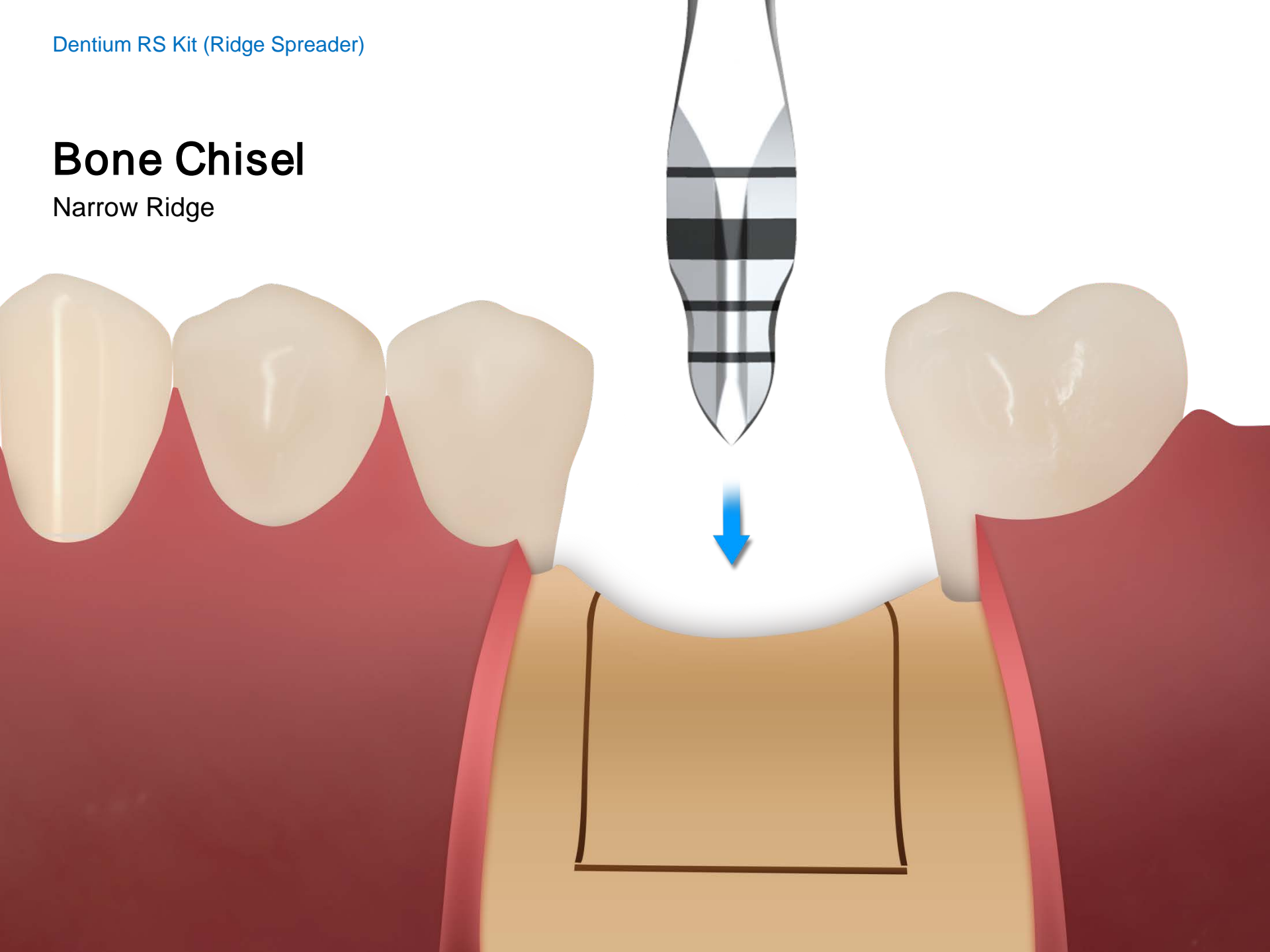
Narrow Ridge



Dentium RS Kit (Ridge Spreader)

Bone Chisel

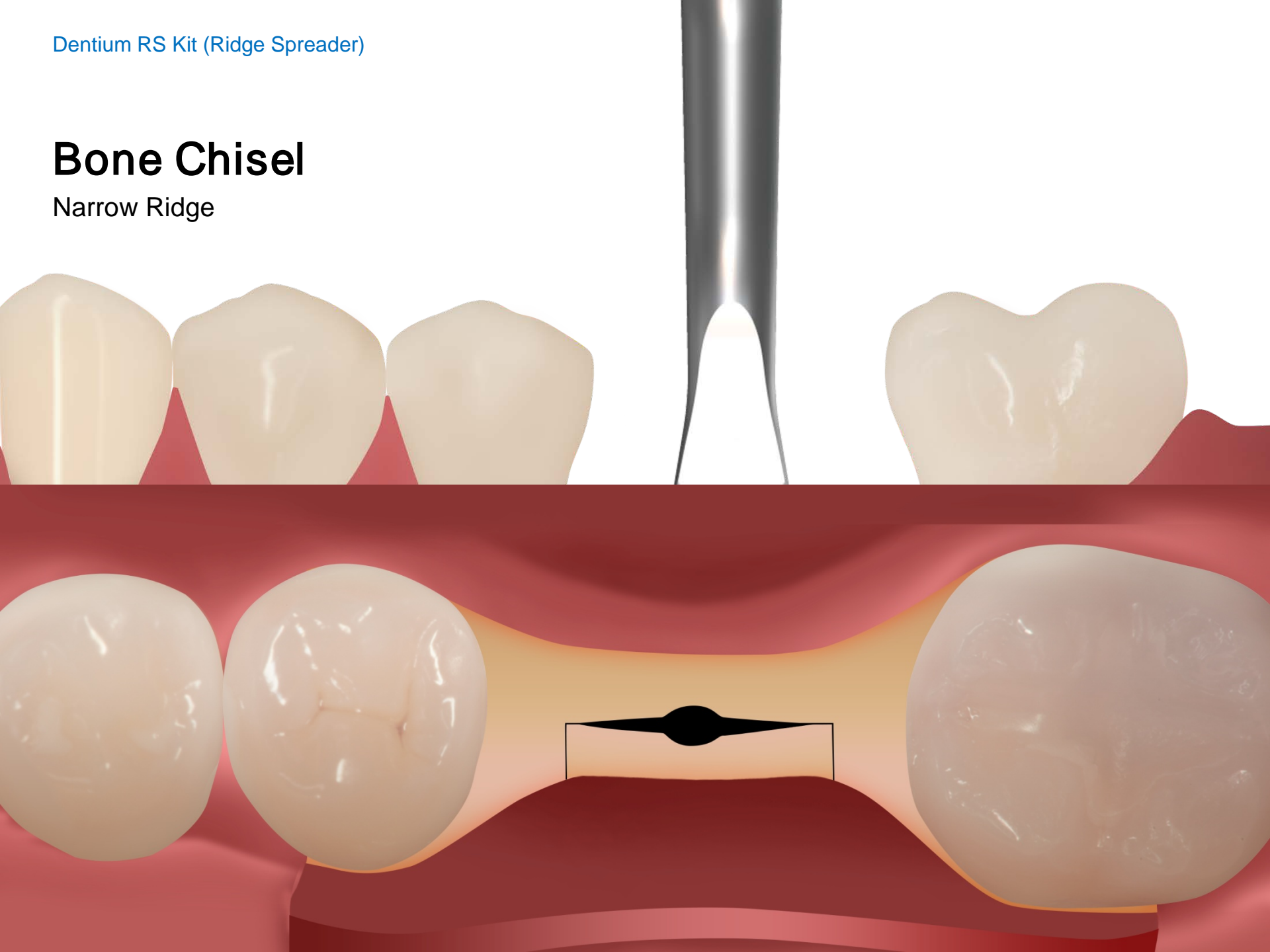
Narrow Ridge



Dentium RS Kit (Ridge Spreader)

Bone Chisel

Narrow Ridge



Dentium RS Kit (Ridge Spreader)

Ridge Spreader

Expanding alveolar bone ridge to make
Space for fixture



Dentium RS Kit (Ridge Spreader)

Ridge Spreader

Expanding alveolar bone ridge to make
Space for fixture



Dentium RS Kit (Ridge Spreader)

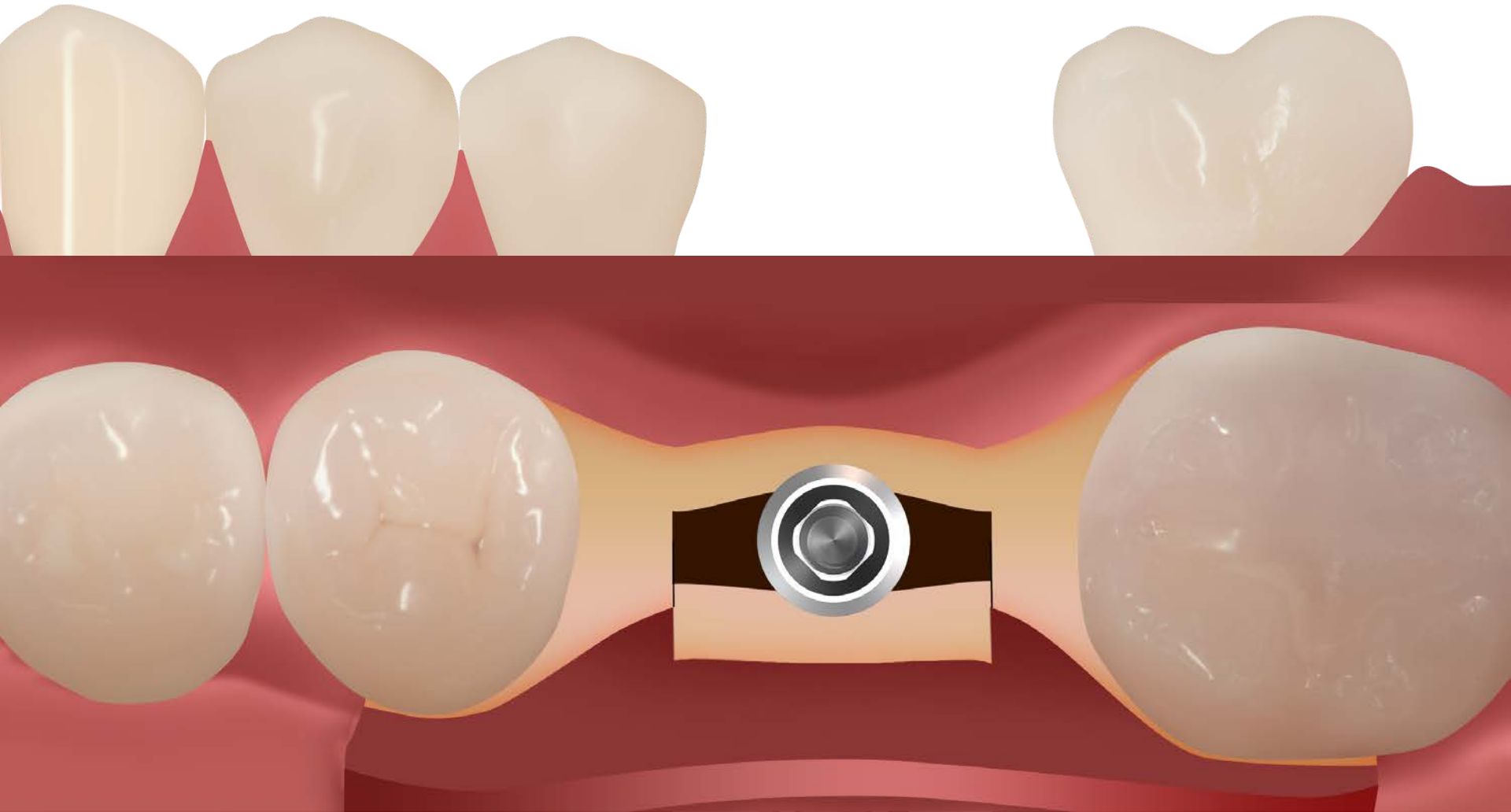
Ridge Spreader

Expanding alveolar bone ridge to make
Space for fixture

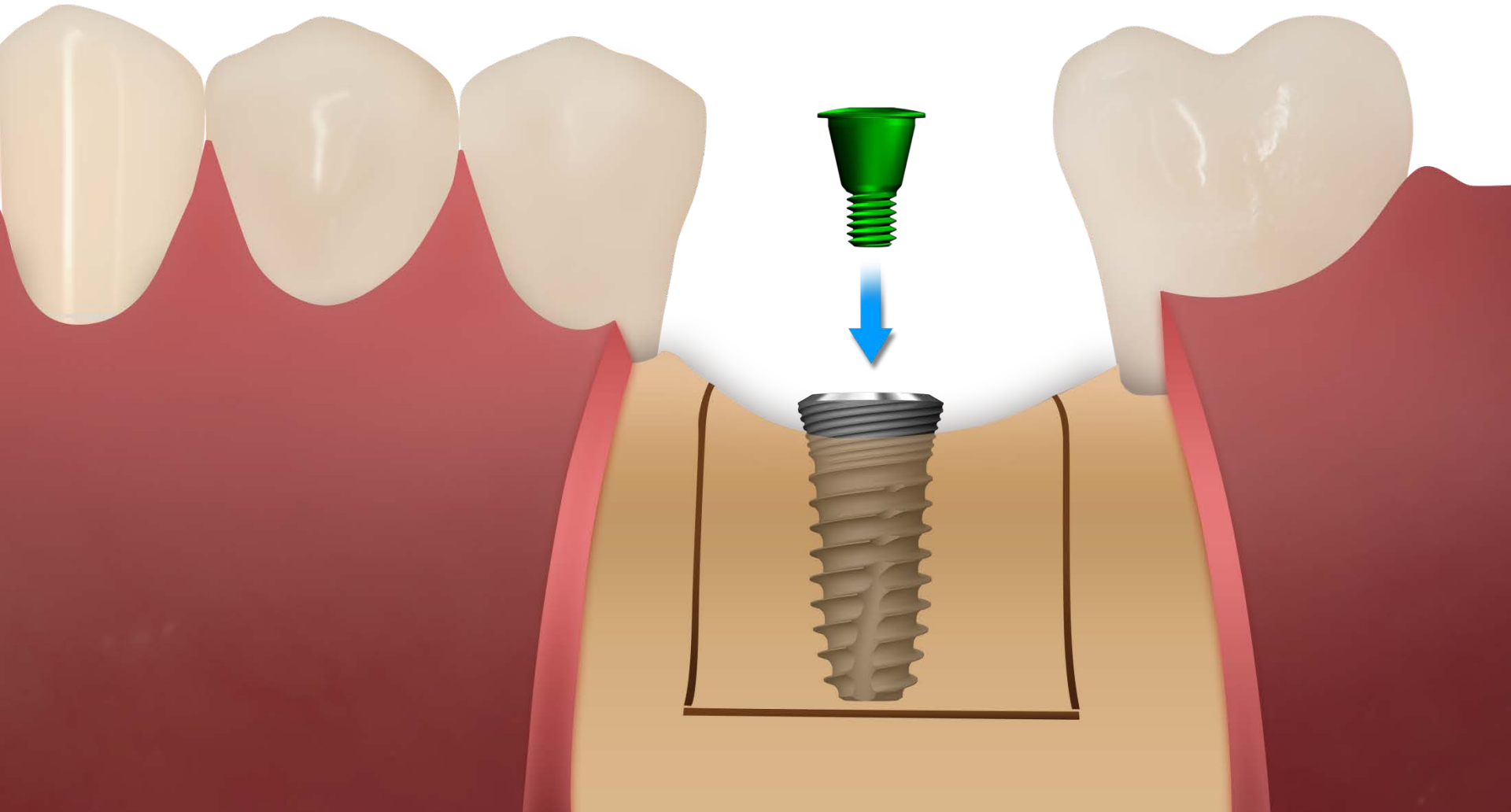


Fixture Installation

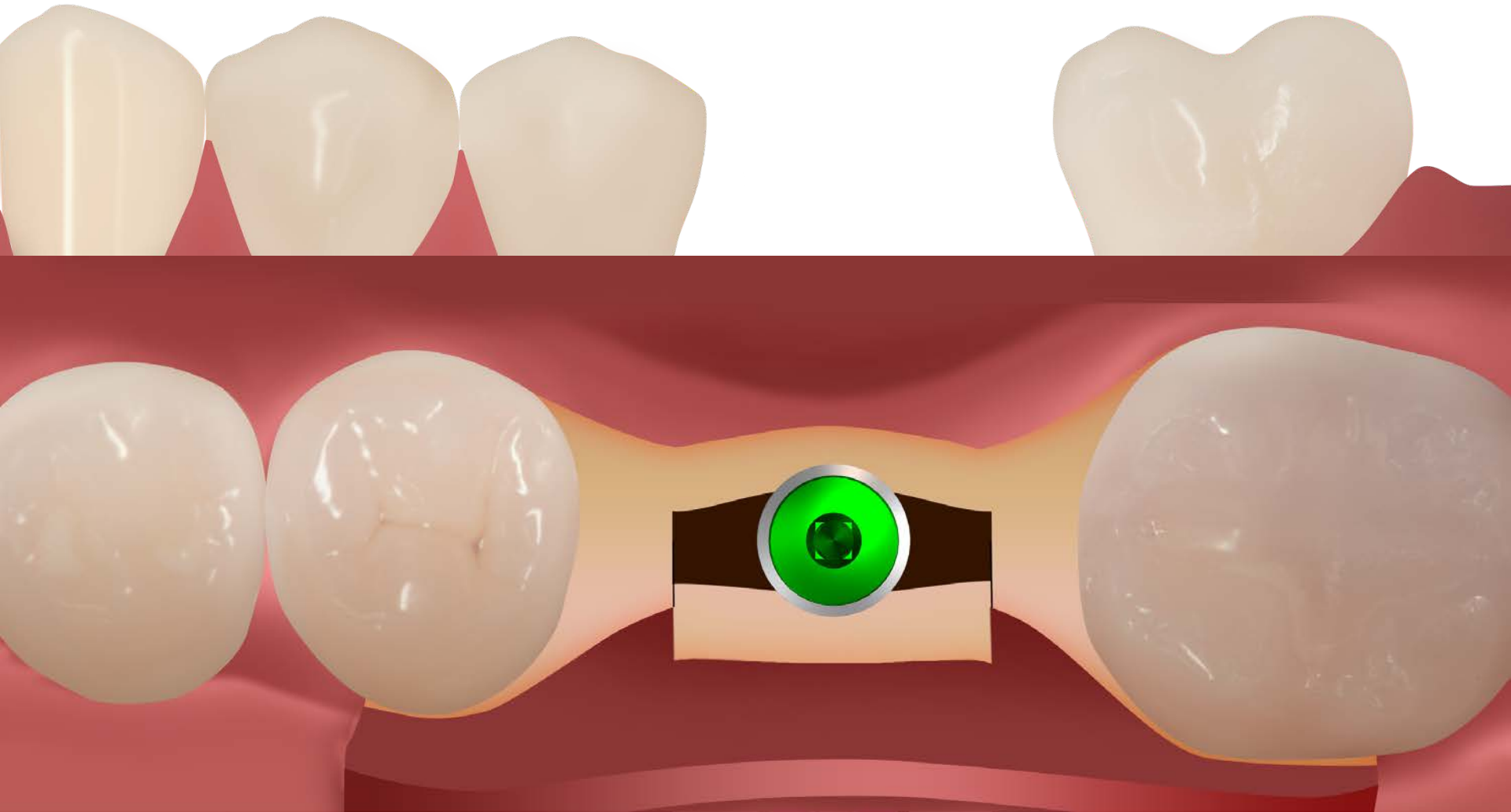
NRLine 3609W



Cover Screw Connection

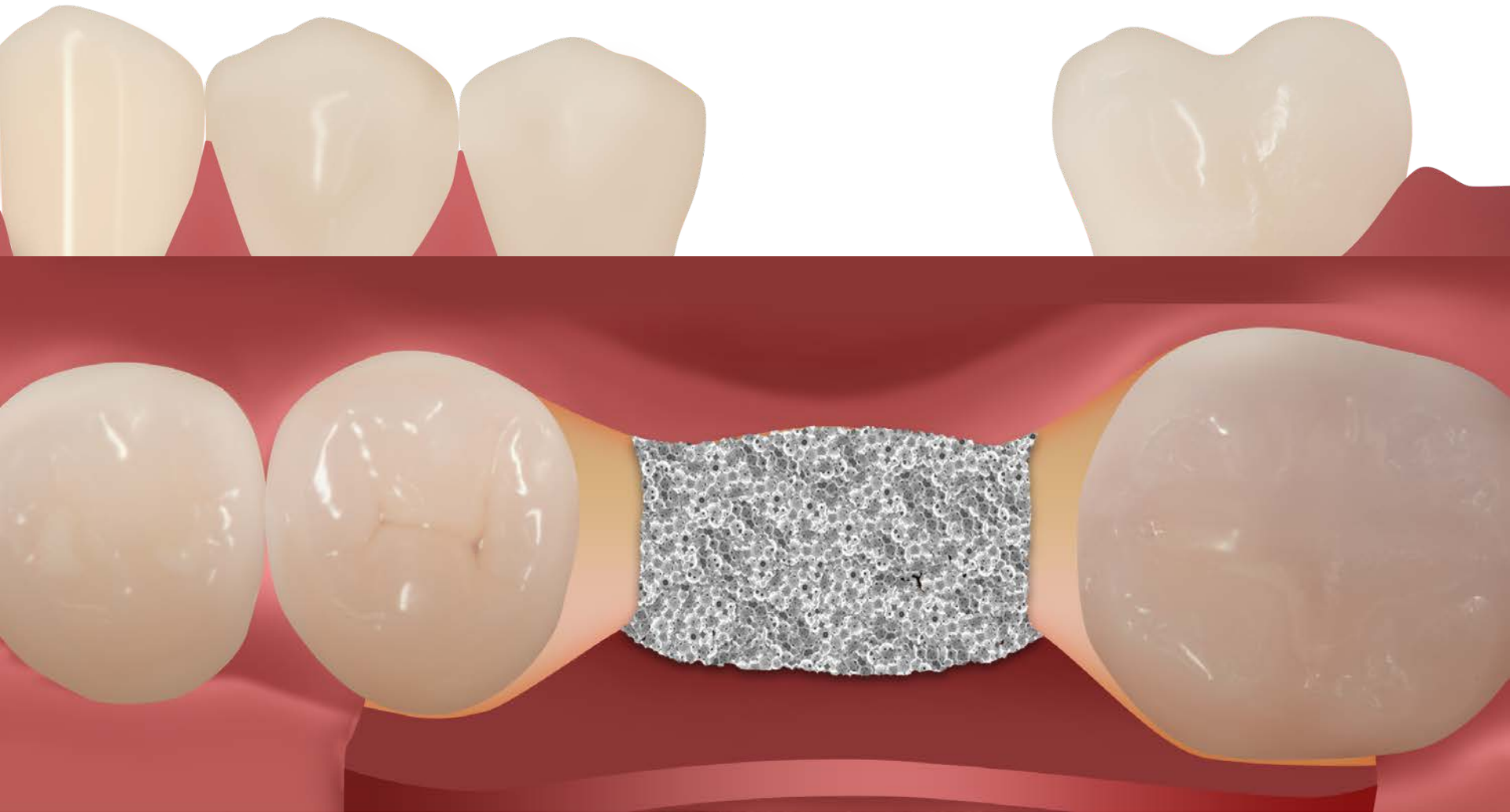


Cover Screw Connection



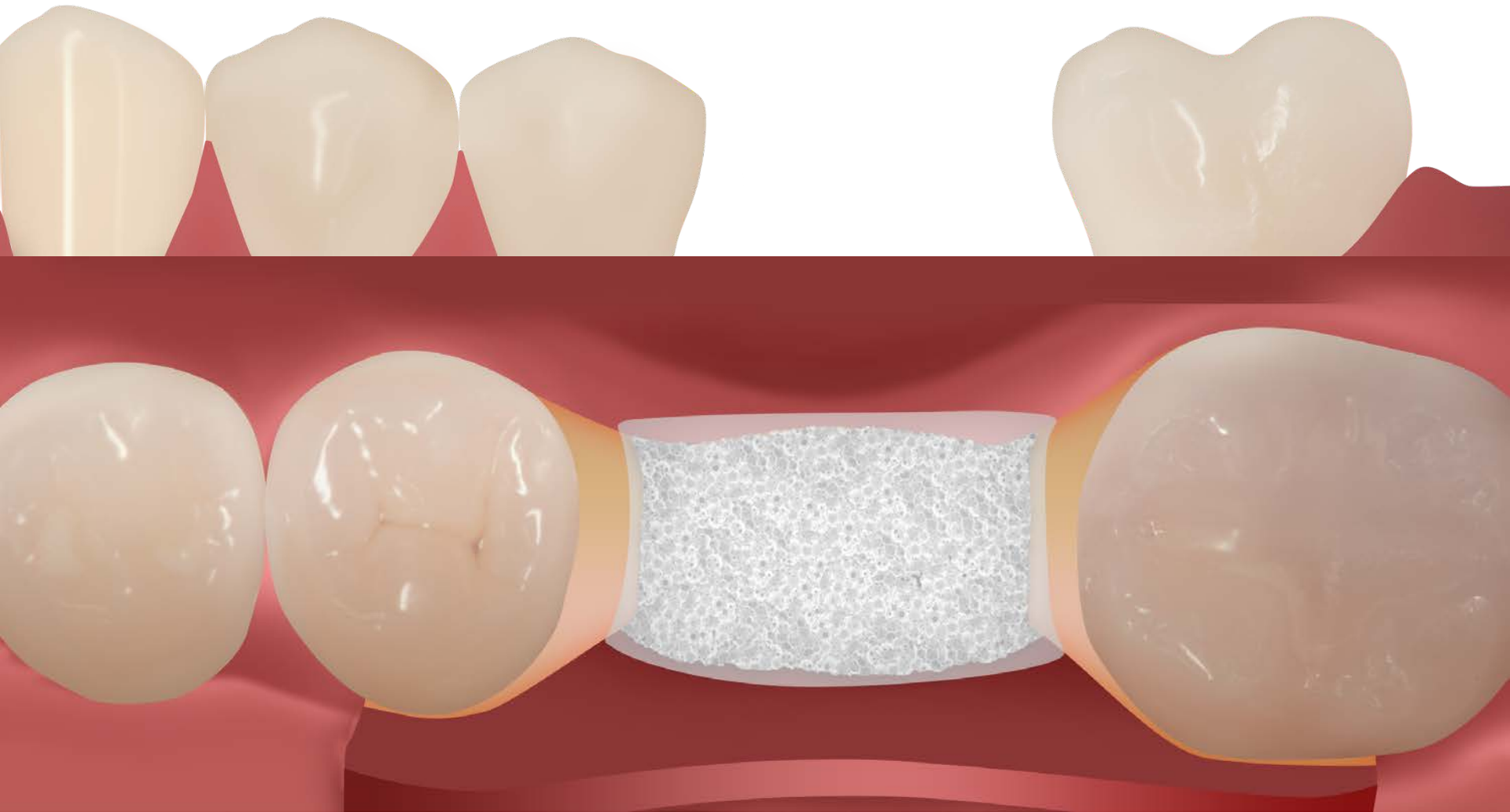
Application of graft material

OSTEON™ II

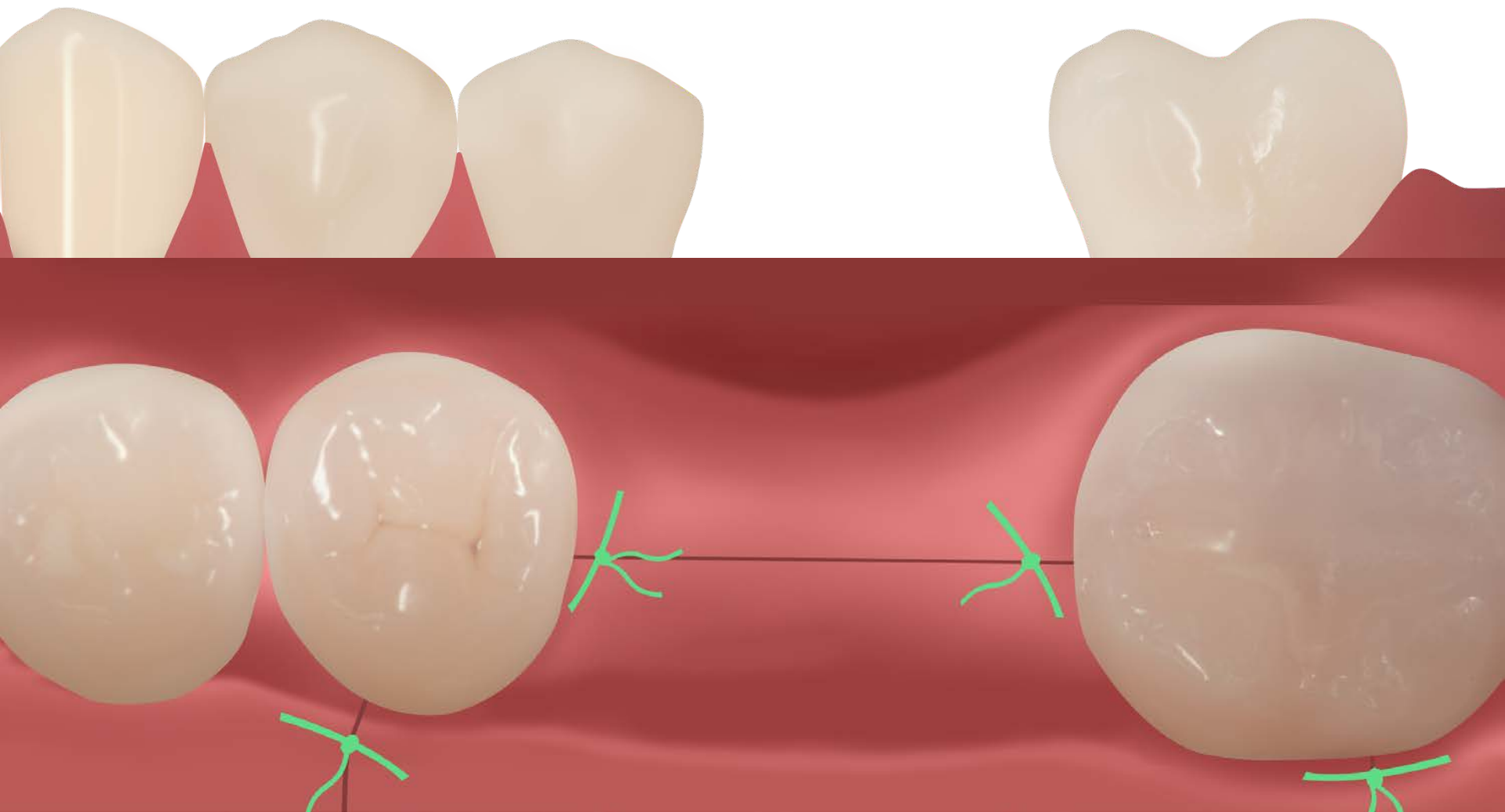


Barrier membrane application

Collagen Membrane



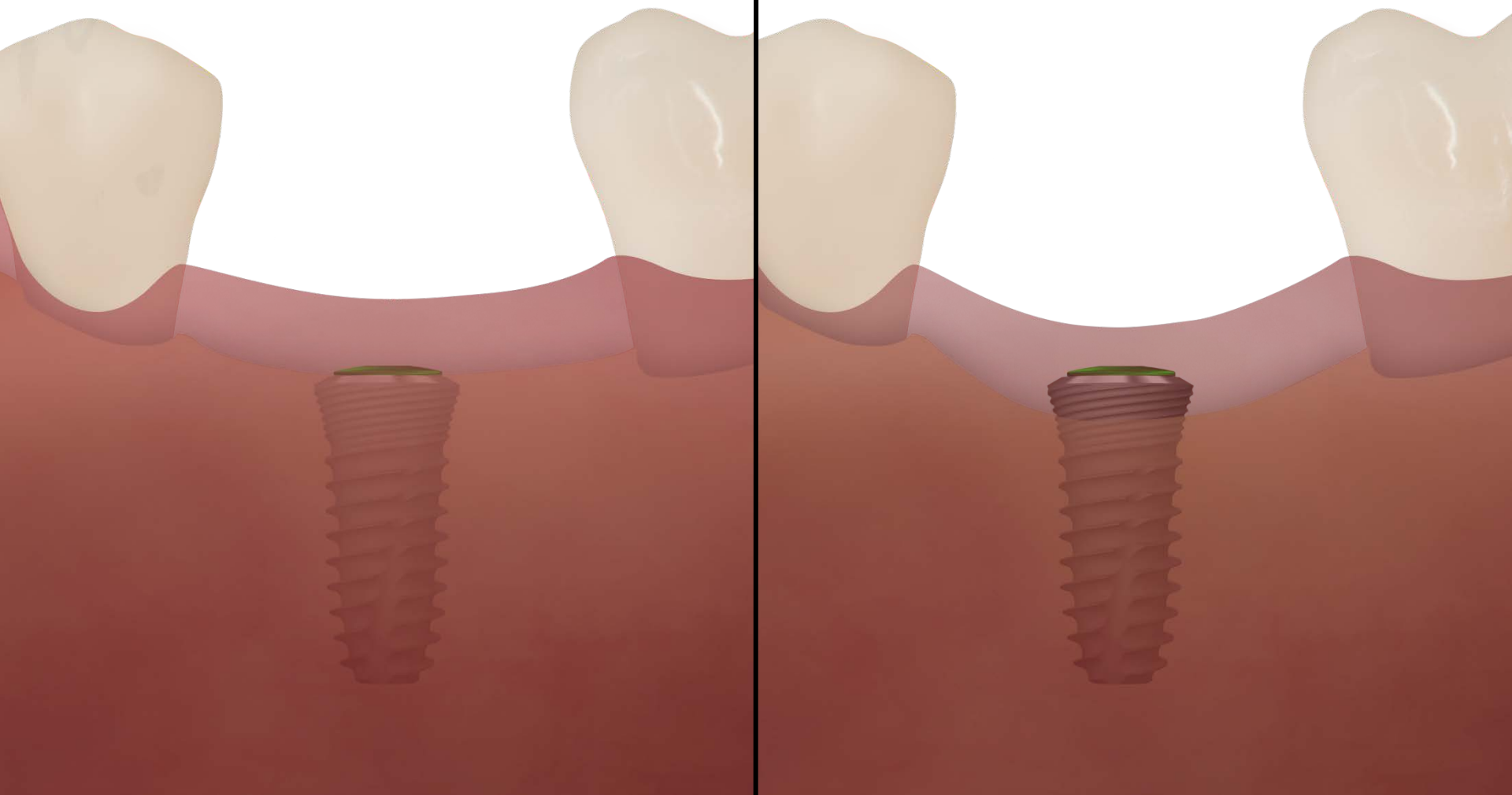
Suture



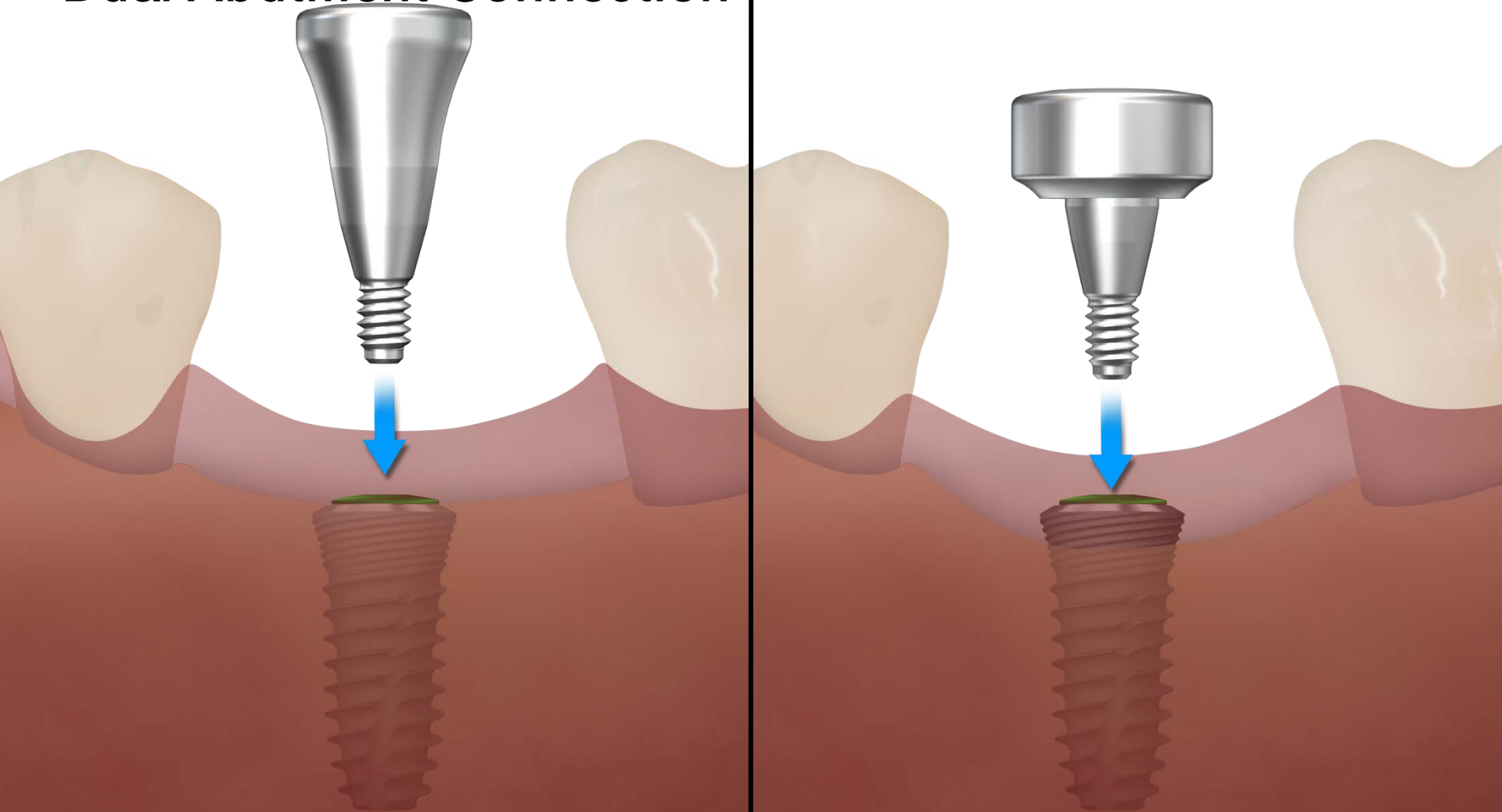
Healing



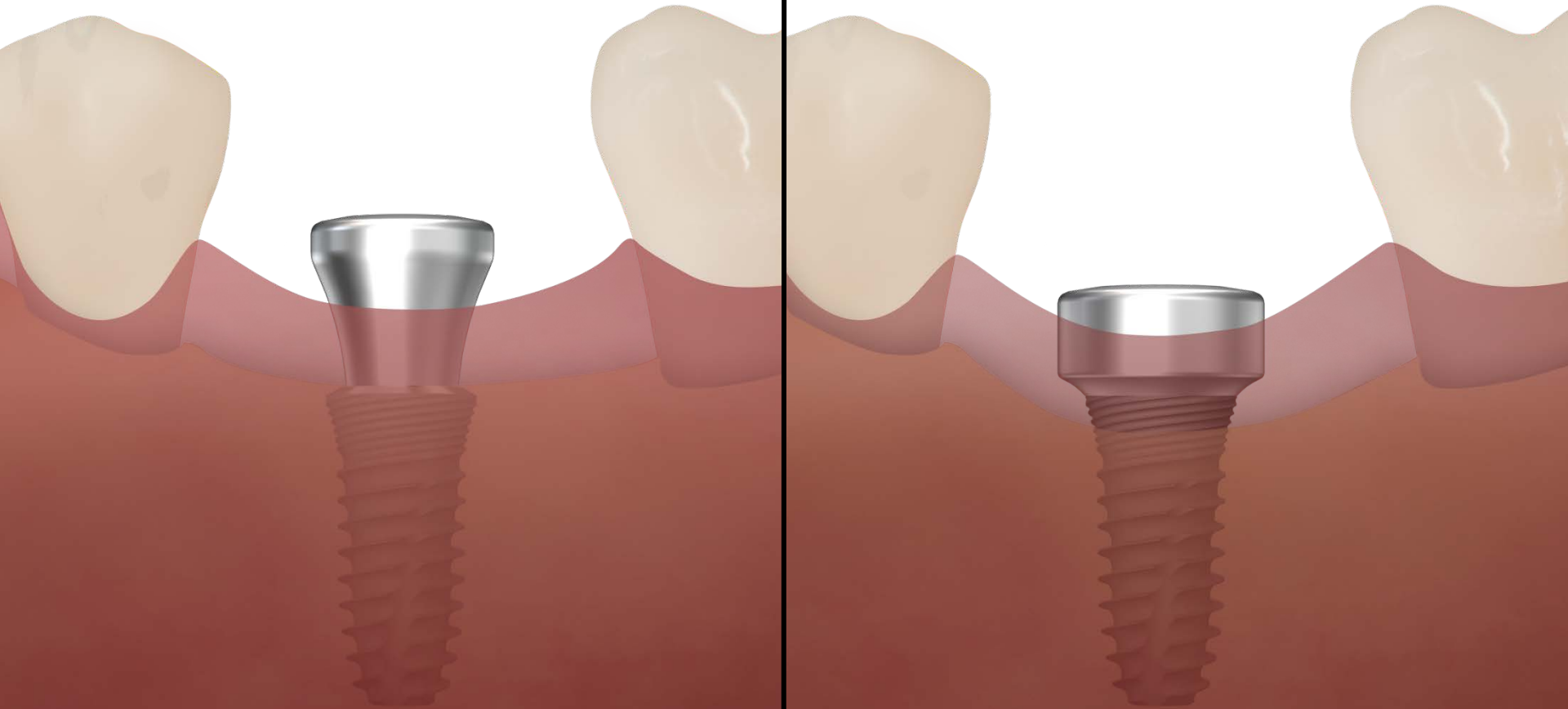
Dentium RS Kit (Ridge Spreader)



Dual Abutment Connection

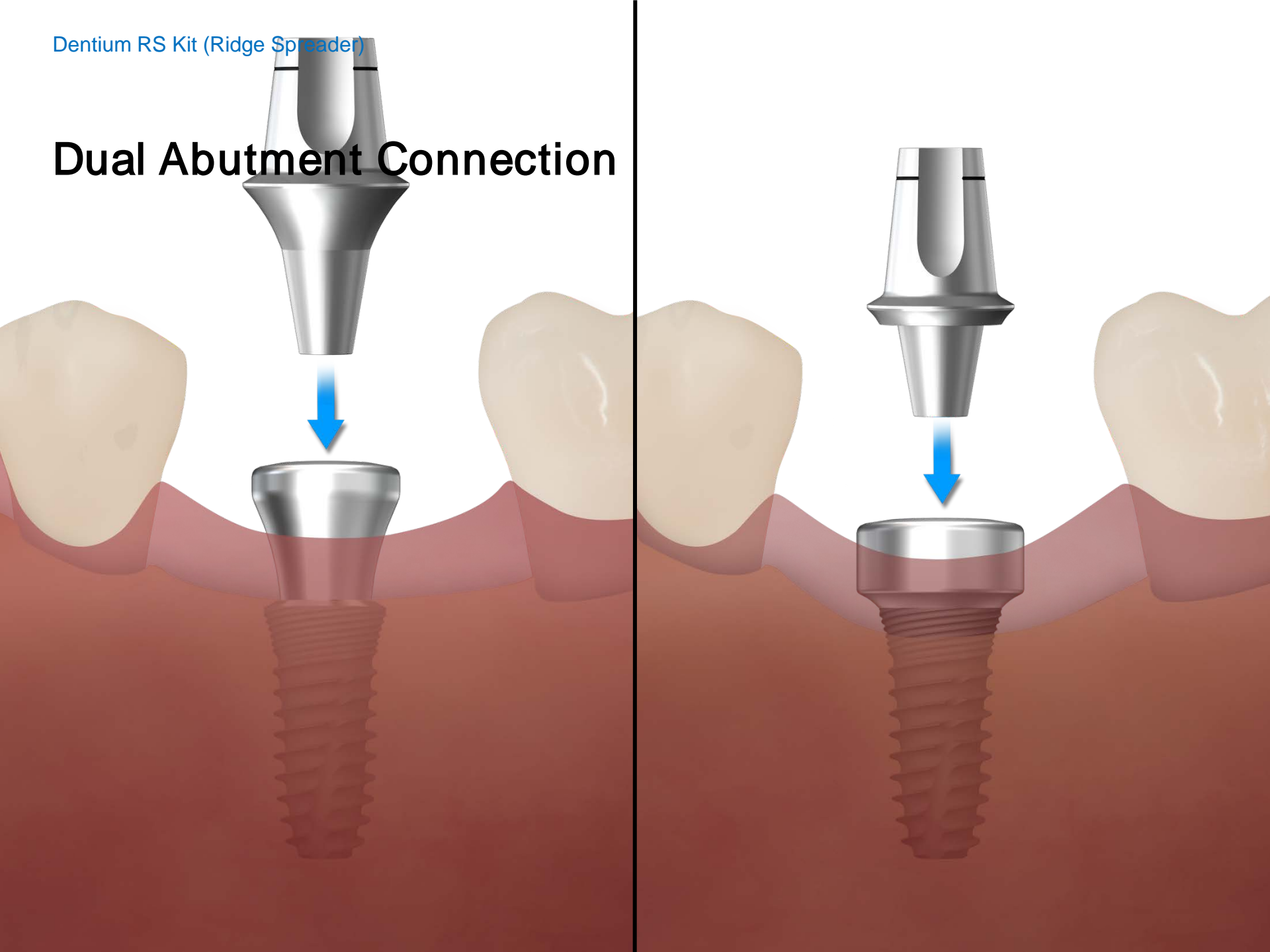


Dual Abutment Connection

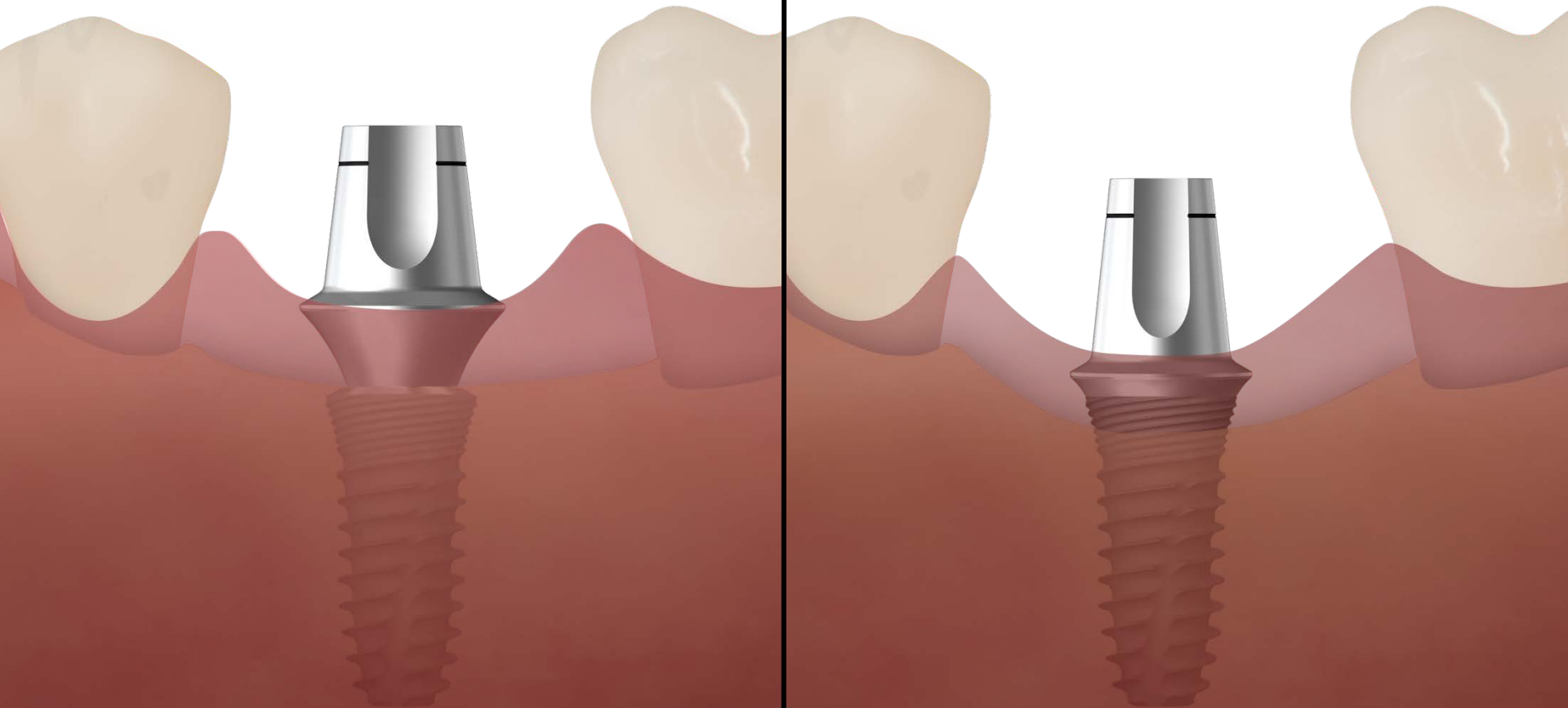


Dentium RS Kit (Ridge Spreader)

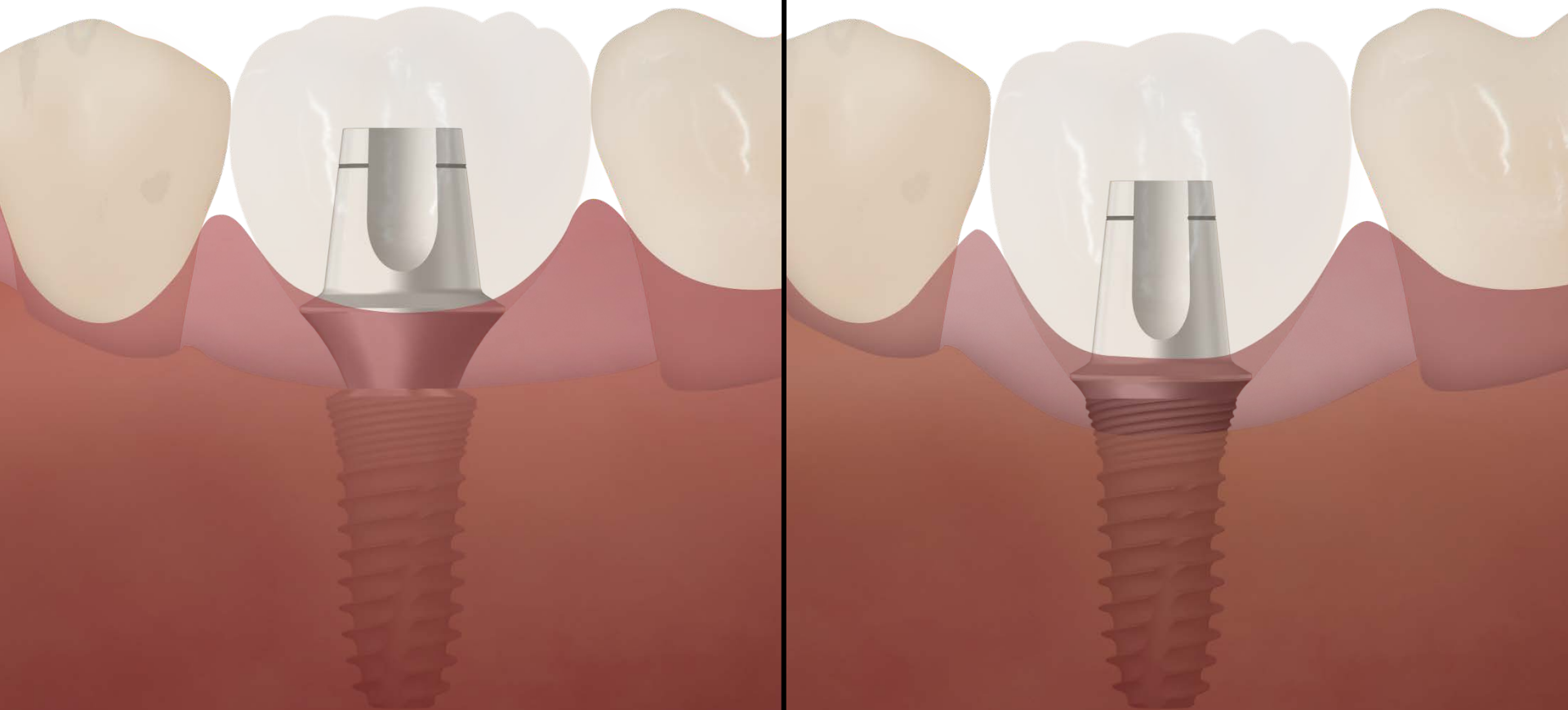
Dual Abutment Connection



Dual Abutment Connection



Final prosthesis



Final prosthesis

